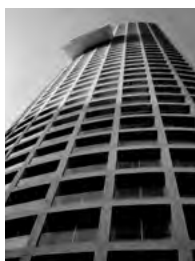
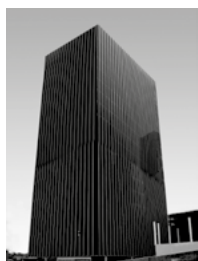
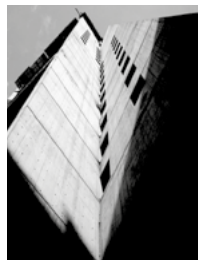


AC
HOTELS
MAURITZ

CONTENT



ANTEUS CONSTRUCTORA	3
SUPPORT SERVICES	4
CONSTRUCTION SERVICES	7
POST - TENSIONING	8
METALLIC STRUCTURE	10
PREFABRICATED WALLS	11
PRESLABS	12
STEEL ASSEMBLING FACILITIES	14
CRANES & SITE ELEVATORS	15
TURNKEY PROJECTS	19
CONSTRUCTION IN PROGRESS	23
COMMERCIAL CONSTRUCTION	39
HOUSING CONSTRUCTION	58
INDUSTRIAL CONSTRUCTION	84

ANTEUS CONSTRUCTORA

ANTEUS CONSTRUCTORA IS A CONSTRUCTION AND CIVIL ENGINEERING COMPANY CAPABLE OF PROVIDING ALL SERVICE AND FUNCTIONS REQUIRED TO CARRY OUT CONSTRUCTION, ADAPTATION OR REMODELING PROJECTS UNDER THE BEST TERMS OF EFFICIENCY AND COST.

SINCE 1996, OUR EXPERIENCE AND SKILLS ENABLE US TO PERFORM DIRECTLY MOST OF OUR WORK, ALTHOUGH WE CAN SUBCONTRACT SPECIFIC JOBS IN CERTAIN CASES BASED ON OUR EFFORTS TO SEARCH FOR THE MOST CONVENIENT AND COST-EFFECTIVE FORMULA FOR EACH PROJECT.

AS A COMPANY, WE HANDLE TURNKEY PROJECTS FOR ANY TYPE OF CONSTRUCTION (HOUSING, COMMERCIAL OR INDUSTRIAL). THIS ALLOWS US A GREATER OPTIMIZATION IN THE EXECUTION TIMES AS WELL AS IN THE QUALITY OF WORK.



SUPPORT SERVICES

BIM

DEVELOPING THE PROJECT THROUGH THIS METHODOLOGY HELPS TO PREVENT PROBLEMS BETWEEN SPECIALTIES DURING THE DIFFERENT STAGES OF THE PROJECT: PRECONSTRUCTION, CONSTRUCTION AND EVEN POSTCONSTRUCTION, MAKING THE PROCESSES MORE EFFICIENT.

PROCORE

FOR THE PLANNING AND MANAGEMENT OF EACH PROJECT, WE RELY ON THE USE OF THIS PLATFORM, OPTIMIZING TIME AND WORK EXECUTION.

WORK MANAGEMENT

WE SUBMIT THE MEANS TO DETERMINE CONCORDANCE BETWEEN REAL AND PLANNED COSTS, SCHEDULING, AND ACHIEVEMENT OF THE ESTABLISHED GOALS. WE LINK TIME AND COSTS IN ORDER TO EXECUTE WORK BASED ON ITS ESTABLISHED SCHEDULE.

PLANNING

CREATION AND IMPLEMENTATION OF PROJECT LEADING AND MANAGEMENT STRATEGIES, BASED ON OBJECTIVES, LOOKING FOR THE MOST EFFICIENT AND COST-EFFECTIVE FORMULAS. TURNKEY PROJECT MANAGEMENT, WHICH ALLOWS US TO BETTER OPTIMIZE EXECUTION TIMES AS WELL AS QUALITY OF WORK.

SCHEDULING

CALCULATION, PREPARATION, AND GRAPHIC REPRESENTATION OF EXECUTION TIMES; ESTABLISHMENT OF DATES FROM THE BEGINNING TO THE END OF THE ACTIVITIES THAT MAKE UP THE PROCESSES.

QUALITY CONTROL

SUPERVISING THAT MATERIALS AND EXECUTION MEET THE CONSTRUCTION REQUIREMENTS REGARDING RESISTANCE AND APPEARANCE.

SAFETY

WE ESTABLISH THE POLICIES AND PROCEDURES TO GUARANTEE THE SAFETY OF THE CONSTRUCTION PERSONNEL AND SUBCONTRACTORS.



DELFINARIO. CABO SAN LUCAS, B.C.S.



CORPORATE ANDARES. ZAPOPAN, JALISCO.

SUPPORT SERVICES

BUDGETING AND PURCHASING

QUOTATION OF DIFFERENT PROJECTS IN ORDER TO ASSESS THE BEST OPTION BASED ON COST AND EXECUTIO TIME.

ALSO, AN ANALYSIS OF UNIT PRICES AND CONSTRUCTION ESTIMATES IS PERFORMED DURING THE CONSTRUCTION PROCESS CONSIDERING THE INFLATIONAY INDEXES.

CONTROL AND WORK REPORTS

WE SUBMIT THE MEANS TO DETERMINE CONCORDANCE BETWEEN REAL AND PLANNED COSTS, SCHEDULING, AND ACHIEVEMENT OF THE ESTABLISHED GOALS. WE LINK TIME AND COSTS IN ORDER TO EXECUTE WORK BASED ON ITS ESTABLISHED SCHEDULE.

SAFETY

WE ESTABLISH THE POLICIES AND PROCEDURES TO GUARANTEE THE SAFETY OF THE CONSTRUCTION PERSONNEL AND SUBCONTRACTORS.

SUBCONTRACTOR SUPERVISION

THE WORK PLAN INCLUDES A GROUP OF SPECIALISTS IN CHARGE OF SUBCONTRACTOR MANAGEMENT AND CONSTRUCTION MANAGEMENT.

ADQUISITION AND SHIPMENT OF EQUIPMENT

WE SUPPLY SPECIAL EQUIPMENT AND SYSTEMS FOR ELECTRICAL AND MECHANICAL WORK. WE PROVIDE ENGINEERING CONSULTANCY SEARCHING FOR THE APPROPRIATE FOR THEIR REQUIREMENT.

CHECK UP STARTING

WE MADE A STRICT SPECIFICATIONS CONTROL OF WORK ESTABLISHED IN THE ORIGINAL PLAN OF CONSTRUCTION, DOING THE VERIFICATION OF THE OPERATIONS OF ALLA THE SYSTEMS UNDER OUR RESPONSABILITY.



BALLROOM.
HOTEL PEÑASCO DEL SOL. PUERTO PEÑASCO, SONORA.



PLAZA ANDRES.
ZAPOPAN, JALISCO.

- HIDROSANITARY
- AIR CONDITIONING AND VENTILATION
- SOFFIT
- HIGH AND LOW VOLTEGE ELECTRICAL INSTALLATIONS
- PLUMBING
- FIRE PROTECTION SYSTEMS
- TILING, CERAMIC, MARBLE AND PLASTIC WORK
- GARDENING
- SOIL MECHANICS
- DIRT MOVING
- FOUNDATIONS
- PILOTAGE
- STRUCTURAL CONCRETE
- STEEL STRUCTURES
- MASONRY
- GENERAL MASONRY
- FLOORS
- CONCRETE PAVEMENT
- ASPHALT PAVEMENT

CONSTRUCTION SERVICES

FOR CERTAIN SPECIFIC JOBS, WE USE
THE SERVICES OF SUBCONTRACTORS,
COORDINATED AND SUPERVISED
AT ALL TIMES FOR ANTEUS
CONSTRUCTORA.

GLASS
ALUMINIUM
CARPENTRY
ISOLATION
HEATING
COOLING TOWERS
ENDED ARCHITECTURAL



POST - TENSIONING

POST-TENSIONING IS A METHOD OF PRESTRESSING IN WHICH PRESTRESSING STEEL IS TENSIONED AFTER CONCRETE HAS HARDENED.

PRE-STRESS IS THE PLACEMENT OF A CONCRETE ELEMENT IN A STATE OF COMPRESSION PRIOR TO THE APPLICATION OF LOADS; THE STRESS DEVELOPED BY THE PRE-STRESS CAN BE PRETENSIONING OR POST-TENSIONING.

PRESTRESSED CONCRETE IS STRUCTURAL CONCRETE IN WHICH INTERNAL STRESSES HAVE BEEN INTRODUCED TO REDUCE POTENTIAL TENSILE STRESSES IN CONCRETE RESULTING FROM LOADS WHICH ARE COUNTERACTED TO A DESIRED DEGREE; IN REINFORCED CONCRETE THE PRESTRESS IS COMMONLY INTRODUCED BY TENSIONING THE TENDONS.

ITS VERSATILITY ALLOWS A WIDE VARIETY OF USES IN CONSTRUCTION: OFFICE BUILDINGS, HOUSING, SHOPPING CENTERS, INDUSTRIAL FLOORS.

THIS METHOD PRODUCES MORE SLENDER STRUCTURAL ELEMENTS, LESS REINFORCING STEEL, LIGHTER ELEMENTS WITH GREATER LOAD CAPACITY, MORE CLEAR OR SPACES BETWEEN THE SUPPORT ELEMENTS.



INDUSTRIAL WAREHOUSE FLOOR ECOPARK, ZAPOPAN, JALISCO.

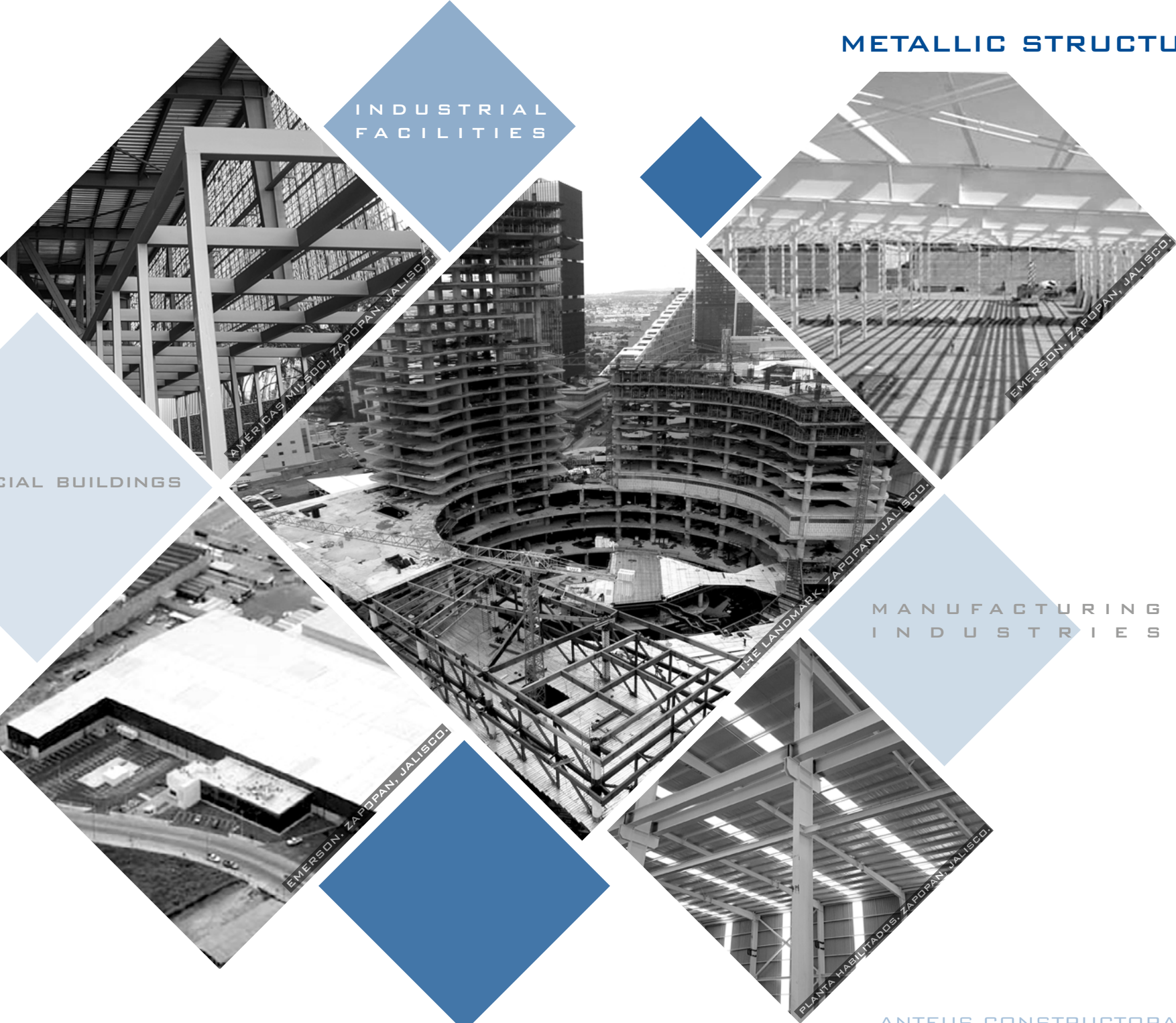


TORRE CUBE, ZAPOPAN, JALISCO.

INDUSTRIAL FACILITIES

COMMERCIAL BUILDINGS

MANUFACTURING INDUSTRIES



AMERICAS MILSCO, ZAPOPAN, JALISCO

EMERSON, ZAPOPAN, JALISCO

THE LANDMARK, ZAPOPAN, JALISCO

EMERSON, ZAPOPAN, JALISCO

PLANTA HABILITADOS, ZAPOPAN, JALISCO

METALLIC STRUCTURE

THE STRATEGIC VISION IN THE CONSTRUCTION INDUSTRY HAS RESULTED IN THE FACT THAT PROVED CONSTRUCTION SYSTEMS AND COMPETITIVE COMPANIES THAT OFFER QUALITY SERVICES AND PRODUCTS ARE THE COMMON REQUIREMENT OF CUSTOMERS LIKE YOURSELF.

WE ARE COGNIZANT OF THE FACT THAT THE RETURN ON YOUR CAPITAL INVESTMENTS IN REAL ESTATE PROPERTY TO PERFORM YOUR PRODUCTIVE ACTIVITIES, SUCH AS INDUSTRIAL WAREHOUSE, INBOND FACILITIES OR SHOPPING CENTERS GOES HAND-IN-HAND WITH THE CONSTRUCTION TIMES AND WITH FAST RESPONSE TO YOUR REQUIREMENTS.

IN THESE SENSE, IT IS CLEAR THAT WORKING CLOSELY WITH THE COMPANIES WHICH ARE AT YOUR SERVICE AND THE SUM OF THEIR STRENGTHS MAKES THE PROCESS OF BUILDING THESE SPACES PROFITABLE AND PRODUCTIVE.

AT ANTEUS CONSTRUCTORA WE ARE COMMITED WITH YOU TO ACHIEVE THIS OBJECTIVE. FOR THIS REASON, WE OFFER ALL OUR PRODUCTS AND SERVICES, OUR CAPACITY AND TECHNOLOGY TO GUARANTEE THE SUCESS OF YOUR VERY IMPORTANT INVESTMENTS.



PREFABRICATED WALLS

HIGH FIRE RESISTANCE

WITH THE SIMPLE MANUFACTURING PROCESS AND WITHOUT SPECIAL COATING, OUR WALLS CAN WITHSTAND UP TO 2 HOURS OF DIRECT EXPOSURE TO FIRE WITHOUT UNDERGOING ANY DAMAGE, THUS PROTECTING THE OWNER'S INVESTMENT AND REDUCING THE ANNUAL INSURANCE PREMIUM.

REDUCTION IN CONSTRUCTION TIME

SINCE WE CAN PREFABRICATE ALL OF THE ELEMENTS SIMULTANEOUSLY WITH THE EXCAVATION, SOIL MOVEMENT, AND FOUNDATION WORK, THE CONSTRUCTION SCHEDULE CAN BE REDUCED UP TO 40% COMPARED TO OTHER SYSTEMS.

LOWER COST

THROUGH MASS PRODUCTION, ALL OF THESE QUALITIES RESULT IN VERY COMPETITIVE COSTS THAT ARE EVEN LOWER COSTS THAN THOSE OBTAINED WITH SIMILAR SYSTEMS.

USING PRESTRESSED WALLS (TILT-UP) IN YOUR PROJECT FOR FACADES, OFFERS GREAT VERSATILITY, SINCE THE STRUCTURE AND THE FINISH ARE CONTAINED IN THE SAME ELEMENT.

TILT UP WALLS

THE TILT-UP WALLS ARE EXTRUDED CONCRETE ELEMENTS OF $f'c = 250 \text{ Kg/cm}^2$, MANUFACTURED IN OUR PLANT OR AT SITE; THE PRESTRESSED IS INDUCED THROUGH STRAND CABLES WHICH ARE PLACED VERTICALLY.





APPLICATIONS

PRESLABS CAN BE USED AS A ROOF AND AS A SLAB SUPPORTED BY ANY KIND OF STRUCTURE (CONCRETE, STEEL, ETC.)



IS A SYSTEM WHICH CONSISTS IN A PRESTRESSED CONCRETE THAT SLAB FABRICATION OUTSIDE THE CONSTRUCTION SITE WITH A BIGGER LOAD CAPACITY AND COVERING LARGER SPACES. THE SLAB FABRICATION IS COMPLETELY AUTOMATED AND MADE OVER STEEL SURFACES. THE CONCRETE HAS A RESISTANCE OF 4,267 OR 4,978 OR 5,689 PSI DEPENDING ON CALCULATIONS.

TENDONS (HAVE DIFFERENT SIZES DEPENDING ON CALCULATIONS) ARE HIGH STRENGTH STABILIZED WITHOUT CURVATURE.

THEY HAVE UNIFORM STRESS-STRAIN CHARACTERISTICS.

PRESLABS HAVE SMOOTH UNDERSIDE, PREPARED FOR PAINTING.

STANDARD WIDTHS ARE, **3.94FT (1.2 M)** AND **7.87FT (2.4M)**.

LENGTH IS VARIABLE.

SHORING NEEDED EVERY **7.22FT** FOR A PRESLAB OF **2.36 IN** **12.47FT** FOR A PRESLAB OF **4 IN** AND **16.4FT** FOR A PRESLAB OF **5.9 IN**.



CIVIL WORKS PARKING LOTS HOTELS HOSPITALS
INDUSTRIAL FACILITIES SCHOOLS & COLLEGES
TUNNELS GENERAL CONSTRUCTION

PRESLAB BEAM

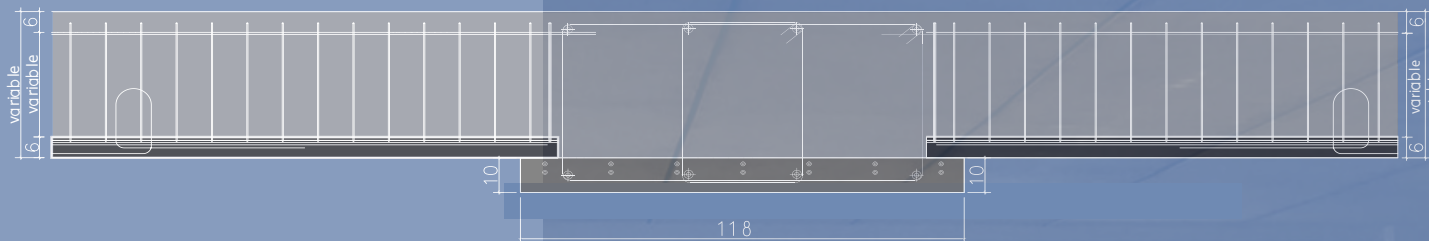
“PRESLAB-BEAM”

IS A SYSTEM WITH A BIGGER LOADER CAPACITY AND LESS DEPTH THAN A NORMAL GIRDER. SYSTEM THAT HAS THE SAME ADVANTAGES OF PRESLAB.



MONOLITHIC AND CONTINUOUS JOINT.

DETAIL OF UNION BY PRESLAB-BEAM





CUT AND BAR BENDING PLANT 79,139.78 FT²

BAR WISER 28 BI-DIRECTIONAL AUTOMATIC BAR SHAPING MACHINE FROM BAR, WITH 2 BENDING HEADS FOR THE PRODUCTION OF SHAPED WIRES AND CUT-TO-SIZE BARS USING WIRES UP TO Ø 28 MM OR DOUBLE Ø 20 MM OR TRIPLE Ø 12 MM.

MINI SYNTAX 16 HS IT ALLOWS TO PRODUCE STIRRUPS, LARGE PROFILES AND BARS CUT TO SIZE WITH ONE OR TWO SQUARES. PRODUCTION CAPACITY OF 1 STRAND, ROLL FROM #2 TO #5, PRODUCTION OF 2 STRANDS, FROM #2 - #4. TECHNICAL CHARACTERISTICS OF GRADE 42 AND GRADE 60 STEEL RAW MATERIAL. PRODUCES UP TO 10 TON. PER DAY.

COIL 16 IT ALLOWS TO PRODUCE STRAIGHT CUT, STRAIGHT CUT WITH ONE OR TWO SQUARES, STIRRUP, STAPLE, SADDLES. 1 STRAND PRODUCTION CAPACITY, ROLL #2 TO #5, 2 STRAND PRODUCTION, #2 - #4. TECHNICAL CHARACTERISTICS OF GRADE 42 AND GRADE 60 STEEL RAW MATERIAL. PRODUCES UP TO 8 TON. PER DAY.

CHV-160 CUTTING MACHINE AND P-60 BENDING MACHINE THERE IS A CHV-160 CUTTER, FOR THE CUTTING PROCESS, ADJUSTING THE ELEMENT TO THE PROGRAMMED MEASURE, AS WELL AS A MANUAL P-60 BENDING MACHINE THAT IS USED TO ENABLE STEEL FOR BEAMS, COLUMNS. REBAR PRODUCTION CAPACITY FROM #10 TO #12. PRODUCES UP TO 15 TON. PER DAY.



PRIMA 13 SPREADER.

PRIMA 16 SPREADER.

SKZ THREADING LINE.

2 HANKAR INDUSTRIAL 5 TON SINGLE DECK CRANES.

CRANES & SITE ELEVATORS

SAEZ TL 505

5T (X1)



S65 4-8T (X3)

TL565 8T (X2)



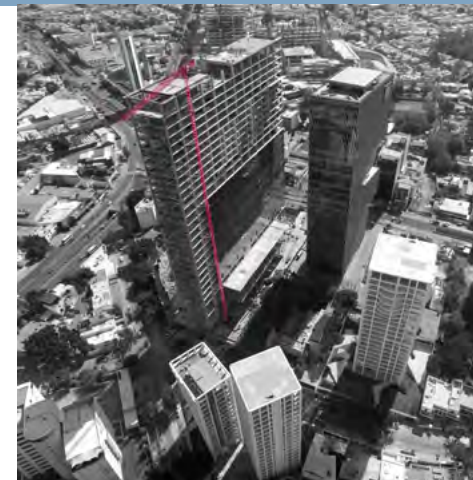
SAEZ S52

4T (X4)



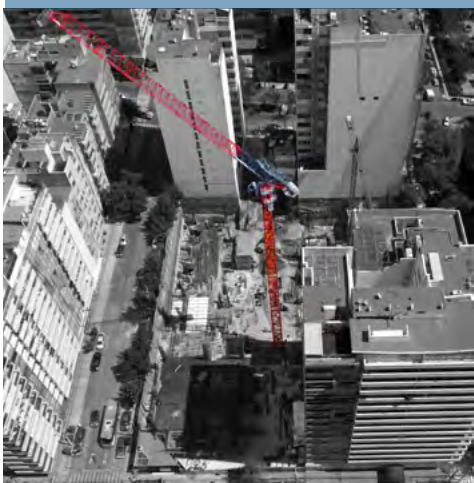
SAEZ 55TL

5T (X2)



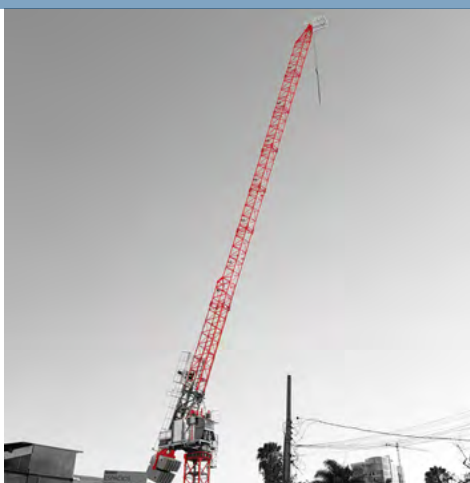
SLH110

6T (X3)



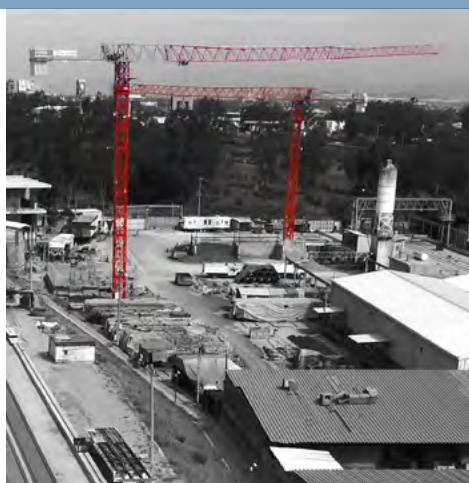
SLH110 TREPADORA

6T (X1)



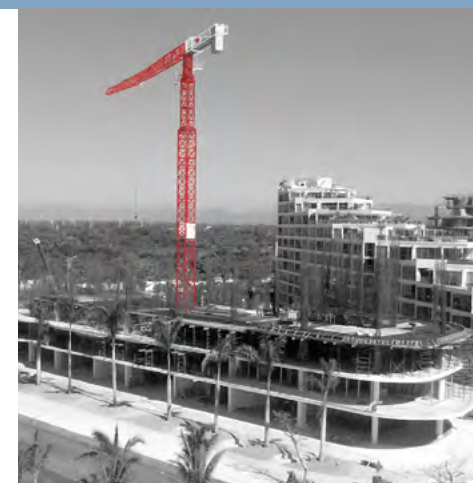
SAEZ S65A

3-6T (X2)



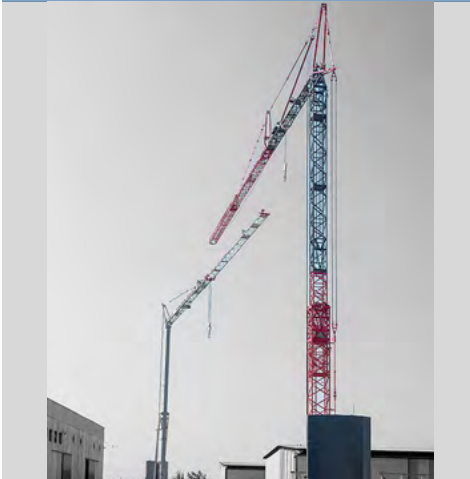
SAEZ TL565B

10T (X2)



SAEZ H32

4T (X4)



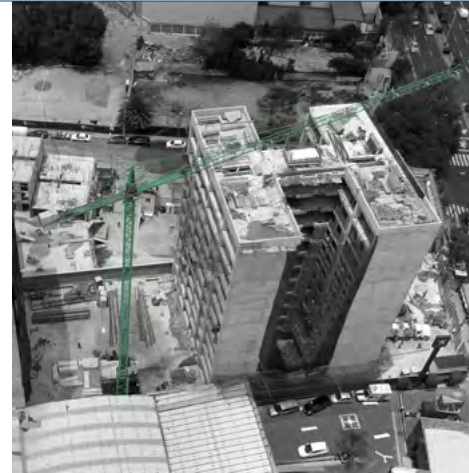
METALBO 4013

2.5T. (X1)



METALBO 5010

2.5T. (X1)



METALBO 3010

2T. (X1)



JASO 52NS

2.5T. (X1)



JASO 47NS

2.5T. (X2)



PERGRUA

2T. (X1)



JASO 5010NS

2.5T. (X1)



CRANES & SITE ELEVATORS

JASO DERRICK

4T (X2)



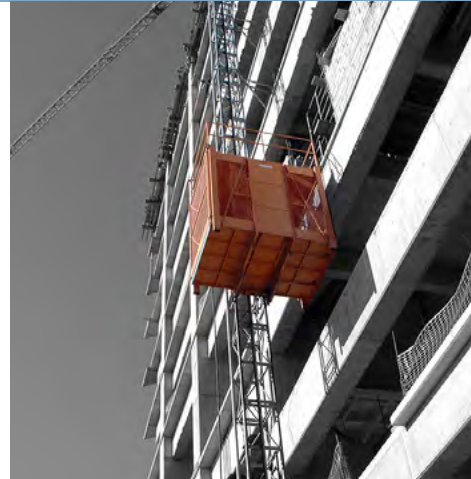
TEREX DERRICK

12T (X1)



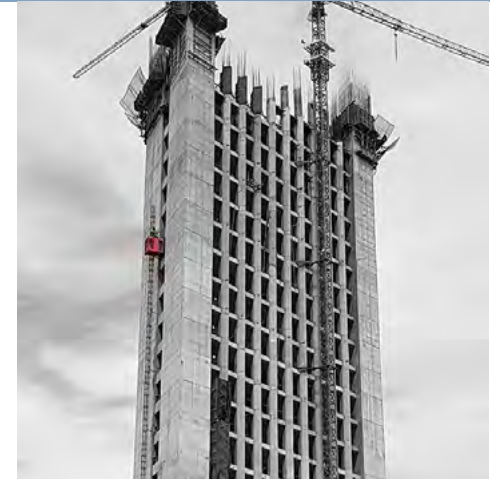
TURBO IBER T1-CR

1T 120M (X2)



TURBO IBER T10-CR

2T 130M (X1)



ALHER T-25

1.3T 100M (X1)



TORGAR T1-25DC

2.5T 114M
DOBLE CABINA (X2)



TORGAR T1-25DC

2.5T 114M
CABINA SIMPLE (X3)



TURBO IBER PEGA PH-2543

2.5 T (X1)



JEKKO
JF545



GROVE
RT530 E-2



TITAN
NATIONAL 800 D

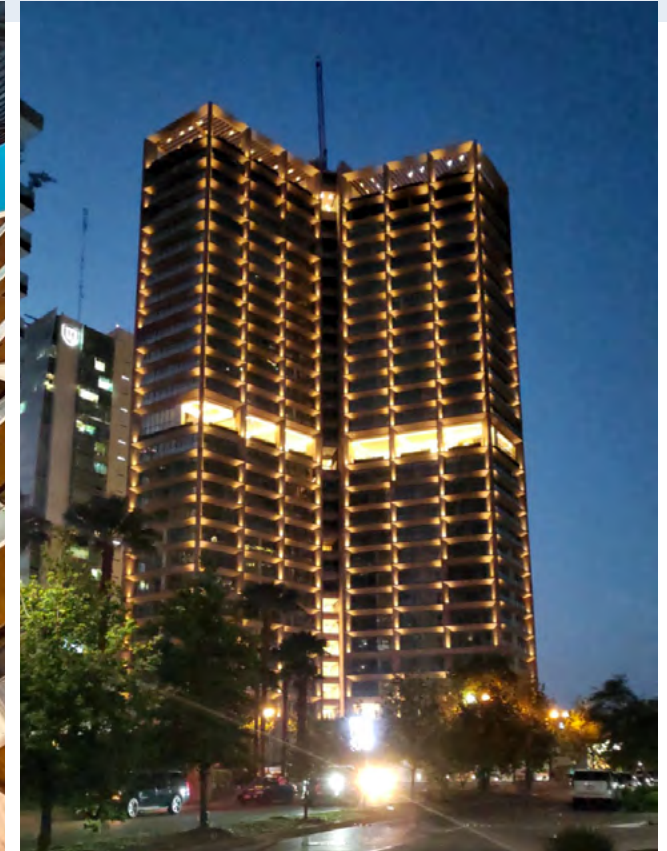


FASSI
F600RA.2.27



TURNKEY PROJECTS





LEGACY TOWER

IN PROGRESS.

TURNKEY PROJECTS

6 STOREYS BASEMENT: 251,913.12 FT².

27 STOREYS TOWER: 454,954.32 FT².

HEIGHT: 416.83 FT.

LOCATION: ZAPOPAN, JALISCO.

PROJECT: SMA.

TURNKEY PROJECTS



DISTRITO CUBE

IN PROGRESS.

STRUCTURAL CONCRETE.

3 BUILDINGS.

3 STOREYS BASEMENT: 126,236.32 FT².

5 STOREYS E/BUILDING: 146,906.28 FT².

TOWER A HEIGHT: 61.02 FT.

TOWER B HEIGHT: 66.11 FT.

TOWER C HEIGHT: 48.56 FT.

LOCATION: ZAPOPAN, JALISCO.

OWNER: CUBE RESIDENCIAL S.A. DE C.V.





TORRE DEL PRADO

IN PROGRESS

TURNKEY PROJECTS

7 STOREYS BASEMENT: 97103.82 FT².

18 STOREYS TOWER: 147729.61 FT².

HEIGHT: 201.77 FT.

LOCATION: ZAPOPAN, JALISCO.

OWNER: C&C CAPITAL.

CONSTRUCTION IN PROGRESS





CONSTRUCTION IN PROGRESS



THE LANDMARK RESERVE

STRUCTURAL CONCRETE.
6 STOREYS BASEMENT: 272,532.40 FT².
36 STOREYS TOWER: 510,453.86 FT².
HEIGHT: 1,600.55 FT.
LOCATION: ZAPOPAN, JALISCO.

CONSTRUCTION IN PROGRESS



TORRE SENNA

1 STOREY BASEMENT: 32,978.47 FT².
12 STOREYS TOWER (HOUSING): 92,314.2 FT².
HEIGHT: 141.27 FT.
5 STOREYS TOWER (OFFICES): 13,2686.29 FT².
HEIGHT: 48,55 FT.
LOCATION: AV. MANUEL LEPE No. 4758. PUERTO VALLARTA,
JALISCO. MÉXICO.



DITELLA

1 STOREY BASEMENT: 49,758.33 FT².
12 STOREYS TOWER: 20,5115.67 FT².
HEIGHT: 145.01 FT.
LOCATION: ACAPULCO DE JUÁREZ, GUERRERO
PROJECT BY: PENINSULA.



ESSENTIA COUNTRY

**STRUCTURAL CONCRETE.
BASEMENT: 4 STOREYS.
21 STOREYS TOWER: 161,205.67 FT².
HEIGHT: 180.45 FT.
LOCATION: GUADALAJARA, JAL.**



ANCORA SATELITE

**STRUCTURAL CONCRETE.
STOREYS BY 13 - 22 AND STOREY ROOFTOP.
CONSTRUCTION: 90,972.05 FT².
HEIGHT: 302.00 FT.
LOCATION: TLALNEPANTLA DE BAZ, EDO. DE MÉXICO
OWNER: PENINSULA.**

CONSTRUCTION IN PROGRESS



NERUDA PROVIDENCIA - AMERICAS

STRUCTURAL CONCRETE.
8 STOREYS BASEMENT: 358,107.86 FT².
24 STOREYS TOWER: 403,022.69 FT².
HELIPORT.
HEIGHT: 306.56 FT.
LOCATION: GUADALAJARA, JALISCO.
OWNER: ROCHER HOLDINGS.



SAO PAULO URBANO

STRUCTURAL CONCRETE.
4 STOREYS BASEMENT: 65,050.33 FT².
28 STOREYS TOWER: 18,044.19 M².
HEIGHT: 306.76 FT.
LOCATION: GUADALAJARA, JALISCO.
OWNER: SERVICIOS AGAC.



ENTORNO MEXICO

STRUCTURAL CONCRETE.
6 STOREYS BASEMENT: 433,227.08 FT².
23 STOREYS TOWER: 463,807.97 FT².
HELIPORT.
HEIGHT: 333.66 FT.
LOCATION: GUADALAJARA, JALISCO.
OWNER: ROCHER HOLDINGS.



ESPACIO YAQUIS TORRE 2

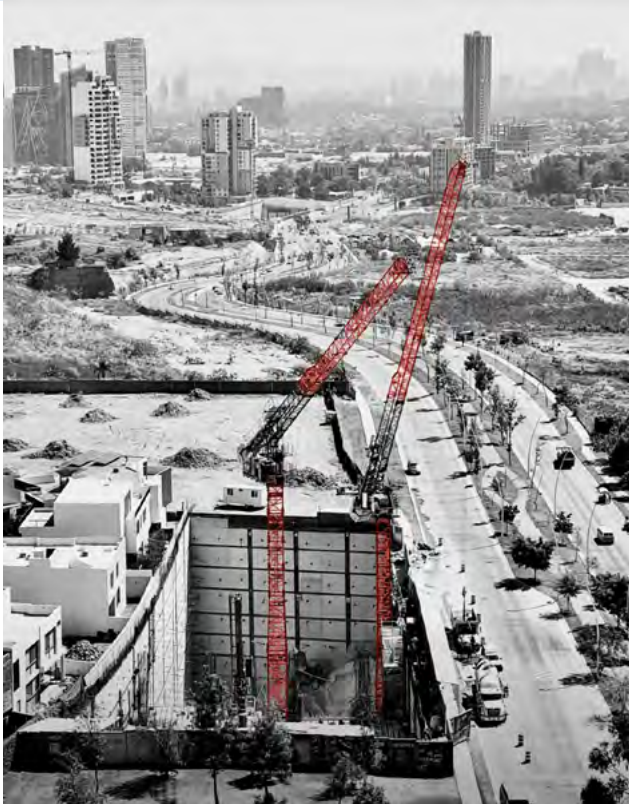
STRUCTURAL CONCRETE.
5 STOREYS BASEMENT: 140,096.38 FT².
18 STOREYS TOWER: 192,495.32 FT².
HEIGHT: 199.31 FT.
LOCATION: GUADALAJARA, JALISCO.
OWNER: DALTON CORPORATIVO.



ESPACIO MONRAZ TERRAZAS

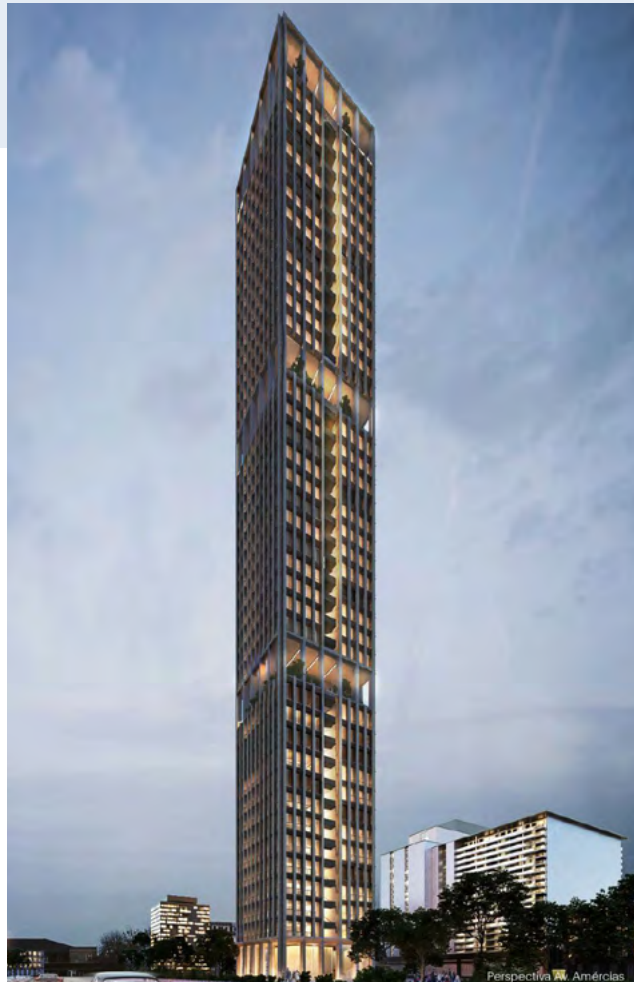
STRUCTURAL CONCRETE.
TOWERS: 2.
4 STOREYS BASEMENT: 106,000.85 FT².
19 STOREYS TOWER 1: 82,857.92 FT².
25 STOREYS TOWER 2: 131,499.79 FT².
HEIGHT: 281.50 FT.
LOCATION: GUADALAJARA, JALISCO.
OWNER: DALTON.

CONSTRUCTION IN PROGRESS



OPERA

STRUCTURAL CONCRETE.
8 STOREYS BASEMENT: 194007.53 FT².
35 NIVELES DE TORRE: 321630.8 FT².
HEIGHT: 414.20 FT.
LOCATION: ZAPOPAN, JALISCO.



VIANTO RESIDENCES

EXCAVATION, RETAINING WALLS,
STRUCTURAL CONCRETE.
4 BASEMENT: 51903.57 FT²
42 STOREYS: 154203.77 FT²
HEIGHT: 349.08 FT.
LOCATION: GUADALAJARA, JALISCO.
OWNER: PENINSULA.
PROJECT:
SORDO MADALENO ARQUITECTOS.



ALYVE

STRUCTURAL CONCRETE.
4 STOREYS BASEMENT: 36,210.65 FT².
17 STOREYS TOWER: 69,576.08 FT².
LOCATION: AV. MANUEL ÁVILA CAMACHO
NO. 2040, JARDINES DEL COUNTRY.
GUADALAJARA, JALISCO.



AGUA AZUL

STRUCTURAL CONCRETE.
4 STOREYS BASEMENT: 49803.21 FT².
12 STOREYS TOWER: 115179.54 FT².
HEIGHT: 158.30 FT.
LOCATION: GUADALAJARA, JALISCO.



BALANDRA

STRUCTURAL CONCRETE.
3 STOREYS BASEMENT: 33,103.36 FT².
11 STOREYS TOWER: 46,524.09 FT².
HEIGHT: 137.80 FT.
LOCATION: GUADALAJARA, JALISCO.

CONSTRUCTION IN PROGRESS



CIMA PARK - T800

STRUCTURAL CONCRETE.
2 STOREYS BASEMENT: 18,997.86 FT².
15 STOREYS TOWER: 179,641.75 FT².
HEIGHT: 183.99 FT.
LOCATION: ZAPOPAN, JALISCO.
OWNER: PENINSULA.



URBANIA 300

STRUCTURAL CONCRETE.
2 STOREYS BASEMENT: 10,404.92 FT².
21 STOREYS TOWER: 215,350.64 FT².
HEIGHT: 219.49 FT.
LOCATION: ZAPOPAN, JALISCO.
OWNER: PENINSULA.



MARSELLESA

STRUCTURAL CONCRETE.
4 STOREYS BASEMENT: 57,802.72 FT².
14 STOREYS TOWER: 120,587.32 FT².
HEIGHT: 137.47 FT.
LOCATION: GUADALAJARA, JALISCO.
OWNER: GRUPO DALTON.



BRELIA

STRUCTURAL CONCRETE.
2 TOWERS.
3 STOREYS BASEMENT: 103,575.76 FT².
T100, 21 STOREYS TOWER: 162,755.76 FT².
HEIGHT 240.16 FT.
T 200, 19 STOREYS TOWER: 140,385.72 FT².
HEIGHT: 208.66 FT.
LOCATION: GUADALAJARA, JALISCO.
OWNER: PENINSULA.



VISTA LOMAS

STRUCTURAL CONCRETE.
2 STOREYS BASEMENT: 69647.99 FT².
9 STOREYS TOWER: 91346.52 FT².
HEIGHT: 96,62 FT.
LOCATION: ZAPOPAN, JALISCO.
ROCHER HOLDINGS.

CONSTRUCTION IN PROGRESS



BODEGA ALAMEDA

STRUCTURAL CONCRETE.

WALLS, FOUNDATION, REFORCE STEEL AND STRUCTURAL STEEL.

SHIP 1 Y 2 - 59,478.57 FT².

**LOCATION : ANTIGUO CAMINO AL SALTO 205 Y 208,
TLAJOMULCO DE ZÚÑIGA.**



THE DISTRICT

STRUCTURAL CONCRETE.

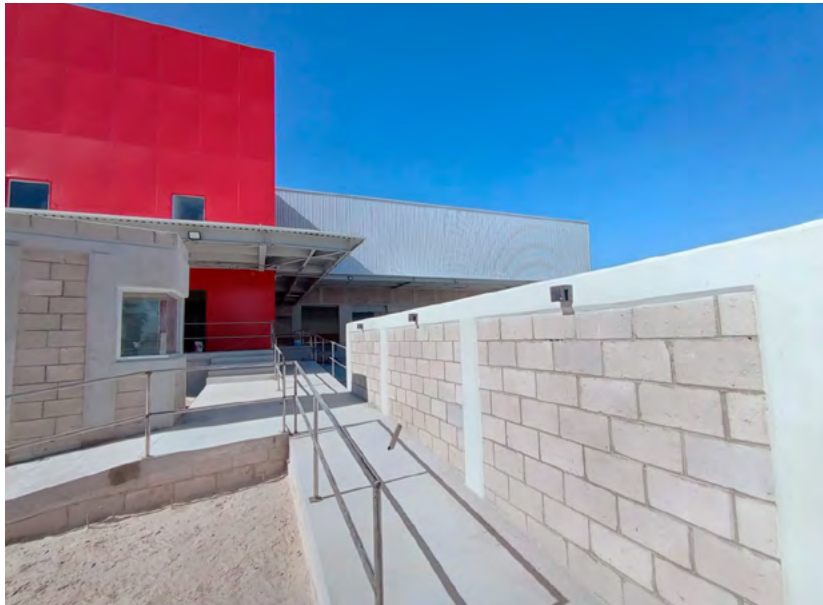
7 STOREYS BASEMENT: 171,643.52 FT².

29 STOREYS TOWER: 254,258.80 FT².

HEIGHT: 422.90 FT.

LOCATION: GUADALAJARA, JALISCO.

PROJECT BY: SMA.



BODEGA TRES GUERRAS

**COMPLEX, WAREHOUSE AND
OFFICES.
CONSTRUCTION: 28,140.31 FT².
LOCATION: ZAPOPAN, JALISCO.**



TIZATE

**STRUCTURAL CONCRETE.
TOWER 300
1 BASEMENT: 9,165.37 FT².
7 STOREYS TOWER: 102,609.94 FT².
HEIGHT: 91.86 FT.
LOCATION: NUEVO VALLARTA, NAYARIT.
OWNER: PENINSULA.**

CONSTRUCTION IN PROGRESS



AMANCAY

**STRUCTURAL CONCRETE.
1 BASEMENT: 18,306.10 FT².
11 STOREYS TOWER: 164,642.10 FT².
HEIGHT: 126.64 FT.
LOCATION: NUEVO VALLARTA, NAYARIT.
OWNER: PENINSULA.**



AZUR

**BEACH RESIDENCES
STRUCTURAL CONCRETE.
1 BASEMENT.
16 STOREYS TOWER.
HEIGHT: 209.32 FT.
LOCATION: ACAPULCO DE JUAREZ, GUERRERO.
OWNER: PENINSULA.**



NAUKA RITZ CARLTON RESERVE

- STRUCTURAL CONCRETE.**
- MAIN BUILDING.**
- WELCOME PABILLION.**
- 26 VILLAS.**
- 6 1/2 BRANDED RESIDENCES.**
- BEACH CLUB.**
- SPA.**
- ADULT POOL.**
- LOCATION: COMPOSTELA, NAYARIT.**
- OWNER: GFA / THOR URBANA.**



CONSTRUCTION IN PROGRESS



LIMU

**STRUCTURAL CONCRETE.
FOUNDATION & RETAINING WALLS.
LOCATION: PUERTO VALLARTA, JALISCO.
OWNER: PENINSULA.**



VALARTE

**FOUNDATION & STRUCTURAL CONCRETE.
1 BASEMENT: 24,057.85 FT².
9 STOREYS TOWER: 133,026.85 FT².
HEIGHT: 137.30 FT.
LOCATION: PUERTO VALLARTA, JALISCO.
OWNER: GOVACASA, S. DE R.L. DE C.V.**



OCEAN ONE

STRUCTURAL CONCRETE.
2 STOREYS BASEMENT: 125,110.50 FT².
25 STOREYS TOWER: 364,959.94 FT².
HEIGHT: 282.97 FT.
LOCATION: ACAPULCO DE JUAREZ, GUERRERO.



BOLONGO FASE III

STRUCTURAL CONCRETE.
11 STOREYS TOWER: 155,737.66 FT².
HEIGHT: 100.56 FT.
LOCATION: BAHIA DE BANDERAS, NAYARIT.
OWNER: PENINSULA.

COMMERCIAL CONSTRUCTION



COMMERCIAL CONSTRUCTION



AMERICAS MIL

STRUCTURAL CONCRETE.

7 STOREYS BASEMENT: 307,736.00 FT².

28 STOREYS TOWER: 625,446.52 FT².

HEIGHT: 401.74 FT.

LOCATION: GUADALAJARA, JALISCO.

OWNER: INMOBILIARIA 1500 S.A. DE C.V.

PROJECT: SORDO MADALENO.



AMERICAS 500

STRUCTURAL CONCRETE.

7 STOREYS BASEMENT: 513,617.84 FT².

29 STOREYS TOWER: 650,033.12 FT².

HEIGHT: 435.04 FT.

LOCATION: GUADALAJARA, JALISCO.

PROJECT: SMA.



CORPORATIVO BANSI

STRUCTURAL CONCRETE.

7 STOREYS BASEMENT: 305,444.12 FT².

32 STOREYS TOWER: 310,178.52 FT².

HEIGHT: 532.48 FT.

LOCATION: GUADALAJARA, JALISCO.

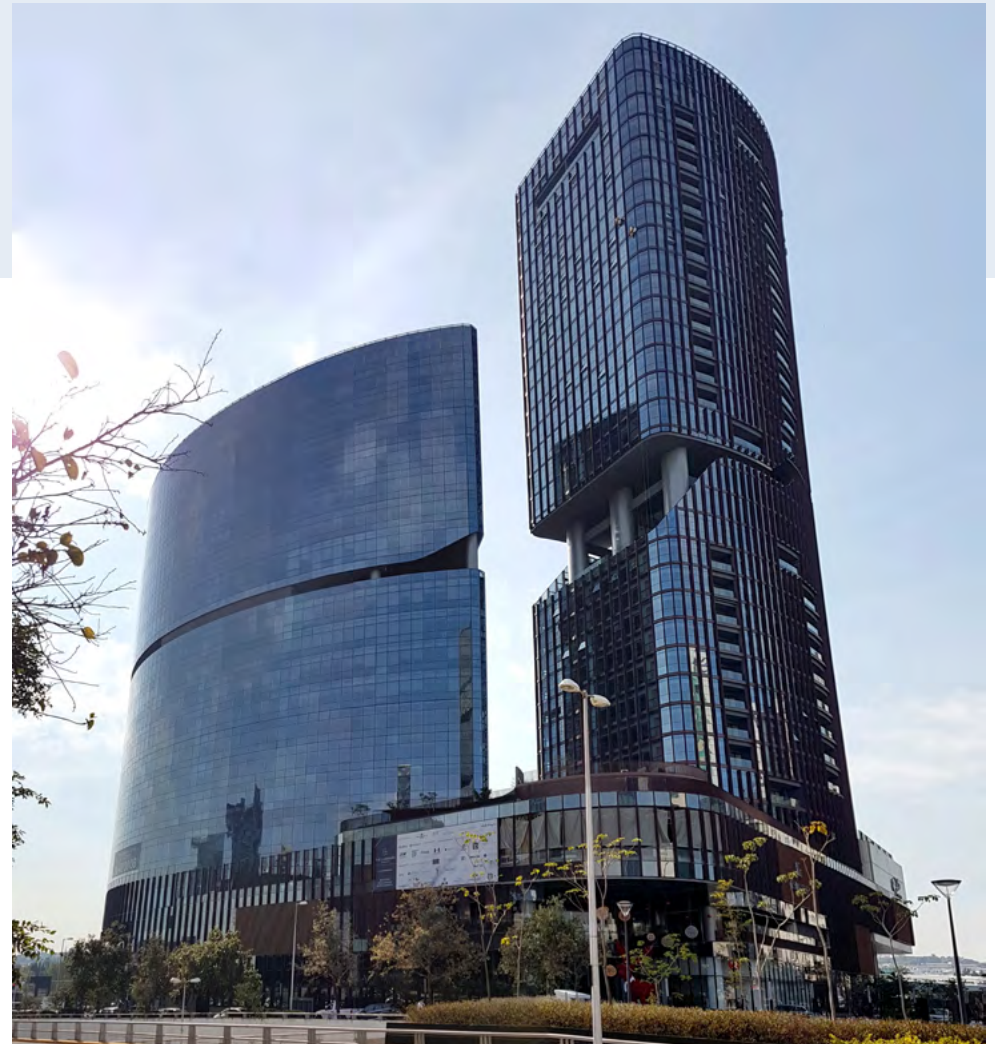
OWNER: BANSI.

COMMERCIAL CONSTRUCTION



ANDARES III HYATT

**4 STOREYS BASEMENT: 75,039,370.1 FT².
STRUCTURAL CONCRETE.
40 STOREYS TOWER: 1,326,751.04 FT².
HEIGHT: 606.96 FT.
LOCATION: ZAPOPAN, JALISCO.
OWNER: D.M.I.
PROJECT: SMA.**



LANDMARK

**STRUCTURAL CONCRETE.
6 STOREYS BASEMENT: 961,685.76 FT².
4 STOREYS COMMERCIAL AREA: 369,971.84 FT².
32 STOREYS HOUSING TOWER: 395,526.84 FT².
HOUSING TOWER HEIGHT: 493.77 FT.
19 STOREYS OFFICES TOWER: 284,193.12 FT².
OFFICES TOWER HEIGHT: 339.57 FT.
LOCATION: ZAPOPAN, JALISCO.
OWNER: GFA.**



TORRE CUBE 2

STRUCTURAL CONCRETE.
LOCATION: ZAPOPAN, JALISCO.
7 STOREYS PARKING BASEMENT: 202,230 FT².
28 STOREYS TOWER: 163,769 FT².
HEIGHT: 408.46 FT.
OWNER: CUBE RESIDENCIAL S.A. DE C.V.
PROJECT: CARME PINOS.



TORRE CUBE

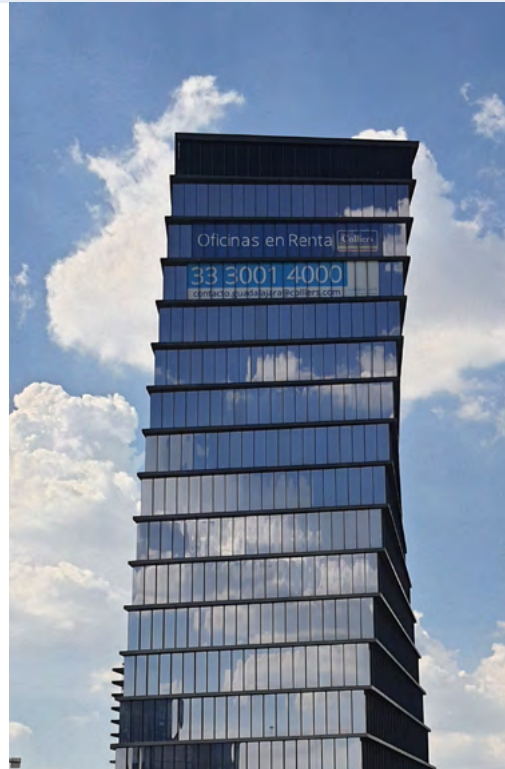
OFFICES BUILDING.
4 STOREYS BASEMENT: 75,320.00 FT².
HEIGHT: 176.67 FT.
16 STOREYS TOWER: 107,600.00 FT².
LOCATION: ZAPOPAN, JALISCO.
OWNER: CUBE INTERNACIONAL.
PROJECT: CARME PINOS.

COMMERCIAL CONSTRUCTION



CORPORATE CENTRAL PARK GDL.

STRUCTURAL CONCRETE.
7 STOREYS BASEMENT: 307,929.68 FT².
29 STOREYS TOWER: 341,382.52 FT².
HEIGHT: 418.31 FT.
LOCATION: GUADALAJARA, JALISCO.
OWNER: PENINSULA.



TORRE HELIX

STRUCTURAL CONCRETE.
7 STOREYS BASEMENT: 117,875.80 FT².
18 STOREYS TOWER: 160,689.84 FT².
HEIGHT: 257.22 FT.
LOCATION: GUADALAJARA, JALISCO.



HOTEL WESTIN

STRUCTURAL CONCRETE.
3 STOREYS BASEMENT: 59,782 FT².
20 STOREYS TOWER: 185,158 FT².
HEIGHT: 311.35 FT.
LOCATION: GUADALAJARA, JALISCO.
OWNER: GRUPO INMOBILIARIO ALHEL.

COMMERCIAL CONSTRUCTION



PABELLON ACUEDUCTO - CORPORATE

**STRUCTURAL CONCRETE.
22 STOREYS TOWER: 220,418.60 FT².
HEIGHT: 297.54 FT.
LOCATION: GUADALAJARA, JALISCO.
OWNER: CITICAPITAL.**



HOTEL ALOFT (NOW HOTSSON)

**STRUCTURAL CONCRETE.
5 STOREYS BASEMENT: 52,950 FT².
23 STOREYS TOWER: 93,397 FT².
HEIGHT: 282.15 FT.
LOCATION: GUADALAJARA, JALISCO.
OWNER: INMO F, S.A. DE C.V.
PROJECT: KMD ARCHITECTS.**



CORPORATE COUNTRY

**OFFICES BUILDING.
8 STOREYS BASEMENT: 219,947.63 FT².
17 STOREYS TOWER: 248,059.64 FT².
LOCATION: GUADALAJARA, JALISCO.
OWNER: C&C CAPITAL.**

COMMERCIAL CONSTRUCTION



CORPORATE ANDARES I

OFFICES BUILDING.
4 STOREYS BASEMENT: 167,963.60 FT².
9 STOREYS TOWER: 161,227.84 FT².
HEIGHT: 156.17 FT.
LOCATION: ZAPOPAN, JALISCO.
OWNER: D.M.I.
PROJECT: SMA.



VISTA ACUEDUCTO

STRUCTURAL CONCRETE WITH PRESLABS.
4 STOREYS BASEMENT: 198,479 FT².
14 STOREYS TOWER: 252,386 FT².
HEIGHT: 224.74 FT.
LOCATION: GUADALAJARA, JALISCO.
OWNER: ROCHER HOLDINGS.



ITESM - CD MX

STRUCTURAL CONCRETE.
LIBRARY, PROFESSIONAL & HIGH SCHOOL.
6 STOREYS LIBRARY TOWER:
118,090.78 FT².
LIBRARY HEIGHT: 85.30 FT.
5 STOREYS PROFESSIONAL TOWER:
223,797.35 FT².
PROFESSIONAL TOWER HEIGHT: 86.94 FT.
6 STOREYS HIGH SCHOOL TOWER:
187,462.01 FT².
HIGH SCHOOL HEIGHT: 80.38 FT.
LOCATION: TLALPAN, CDMX.



CORPORATE ACUEDUCTO

OFFICES BUILDING.
4 STOREYS BASEMENT: 219,245 FT².
16 STOREYS TOWER: 220,580 FT².
HEIGHT: 291.67 FT.
LOCATION: ZAPOPAN, JALISCO.
OWNER: D.M.I.
ARCHITECT: HOK.



LEBEN

STRUCTURAL CONCRETE.
3 STOREYS BASEMENT: 37,767.60 FT².
6 STOREYS TOWER: 48,796.60 FT².
HEIGHT: 98.72 FT.
LOCATION: GUADALAJARA, JALISCO.
OWNER: KIVA GRUPO INMOBILIARIO.



**PABLO NERUDA 2656
(FRATER)**

STRUCTURAL CONCRETE.
**5 STOREYS BASEMENT PARKING LOT:
56,403.92 FT².**
12 STOREYS TOWER: 120,243.11 FT².
HEIGHT: 168.14 FT.
LOCATION: GUADALAJARA, JALISCO.
PROJECT: ELIAS RIZO ARQUITECT.

COMMERCIAL CONSTRUCTION



ANDARES MALL

STRUCTURAL CONCRETE.
BASEMENT SURFACE: 1,350,929 FT².
MALL SURFACE: 538,000 FT².
LOCATION: ZAPOPAN, JALISCO.
OWNER: DMI. PROJECT: SMA.

**FOUR SEASONS RESORT TAMARINDO
MAIN BUILDING & 8 VILLAS**

STRUCTURAL CONCRETE.
1 BASEMENT: 14,913.36 FT².
3 STOREYS MAIN BUILDING: 122,427.28 FT².
MAIN BUILDING HEIGHT: 42.98 FT.
8 VILLAS: 4,605.17 FT² EA.
LOCATION: MPO. DE LA HUERTA, JALISCO.
**PROJECT: LEGOROCHA LEGORRETA + LEGORRETA® TALLER DE
ARQUITECTURA MR + GC.**



CORPORATE OFFICES

STRUCTURAL CONCRETE.
2 STOREYS: 22,401.67 FT².
LOCATION: ZAPOPAN, JALISCO.



COMMERCIAL CONSTRUCTION



GALERIAS GUADALAJARA

MALL EXPANSION.

SURFACE: 119,468 FT².

PARKING LOT EXPANSION.

SURFACE: 202,159 FT².

LOCATION: ZAPOPAN, JALISCO.

OWNER: CITICAPITAL.



TORRE INTER KONE

STRUCTURAL CONCRETE.

4 STOREYS BASEMENT: 56,123.41 FT².

12 STOREYS TOWER: 104,620.88 FT².

HEIGHT: 157.48 FT.

LOCATION: GUADALAJARA, JALISCO.

COMMERCIAL CONSTRUCTION



AMERICAN SCHOOL

STRUCTURAL CONCRETE.

2 STOREYS BASEMENT: 39,979.43 FT².

6 STOREYS TOWER: 136,988.68 FT².

HEIGHT: 91.86 FT.

LOCATION: GUADALAJARA, JAL.

OWNER: THE AMERICAN SCHOOL FOUNDATION OF GUADALAJARA, A.C.



PLAZA PATRIA EXPANSION

STRUCTURAL CONCRETE.

2 STOREYS PARKING BASEMENT: 306,779.44 FT².

3 STOREYS COMMERCIAL BUILDING: 751,485.29 FT².

HEIGHT: 73.33 FT.

LOCATION: ZAPOPAN, JALISCO.

COMMERCIAL CONSTRUCTION



VITANIA

STRUCTURAL CONCRETE.
1 BASEMENT: 28,917.50 FT².
7 STOREYS HOTEL TOWER: 59,071.75 FT².
HEIGHT: 126.31 FT.
LOCATION: NUEVO VALLARTA, NAYARIT.



CAR ATLAS FC

STRUCTURAL CONCRETE.
1 BASEMENT: 20,681.90 FT².
2 STOREYS TOWER: 81,018.28 FT².
HEIGHT: 26.08 FT.
LOCATION: ZAPOPAN, JALISCO.
OWNER: ORLEGI.

COMMERCIAL CONSTRUCTION



NOVENA

STRUCTURAL CONCRETE.
5 STOREYS BASEMENT: 202,596.81 FT².
15 STOREYS TOWER: 277,126.27 FT².
HEIGHT: 232.28 FT.
LOCATION: GUADALAJARA, JALISCO.



DARIO BUSINESS CENTER

COMMERCIAL CONSTRUCTION
DESCRIPTION: CONCRETE STRUCTURE.
4 STOREYS BASEMENT: 97,044.44 FT².
9 STOREYS TOWER: 106,405.64 FT².
HEIGHT: 125.33 FT.
LOCATION: GUADALAJARA, JALISCO.
OWNER: KIVA GRUPO INMOBILIARIO.



SCULPTURE

CONCRETE SCULPTURE "NAMELESS".
MEASUREMENTS: 65.62 x 4.27 x 38.06 FT.
LOCATION: GLORIETA TABACHINES, ZAPOPAN.
SCULPTOR: FRANCISCO UGARTE.

COMMERCIAL CONSTRUCTION



DOLPHIN HABITAT CABO SAN LUCAS

**DOLPHIN HABITAT.
SURFACE: 62,580.16 FT².
LOCATION: CABO SAN LUCAS, B.C.S.
OWNER: CABO DOLPHIN, S.A. DE C.V.
ARCHITECT: ENRIQUE NORTEN.**



EL FARO MALL

**FOUNDATION, CIVIL WORK & FINISHES.
SURFACE: 279,760.00 FT².
LOCATION: SAN JOSE DEL CABO, B.C.S.
OWNER: LOS CABOS B & B, S. DE R.L. DE C.V.**



**LIBRARY PARKING
UNIVERSIDAD DE GUADALAJARA**

**PARKING LOT.
MANUFACTURE AND PLACEMENT OF PRE-SLABS.
AREA: 119,436.00 FT².
LOCATION: ZAPOPAN, JALISCO.
OWNER: UNIVERSIDAD DE GUADALAJARA.**

COMMERCIAL CONSTRUCTION



CASINO WINPOT ANDARES

**STRUCTURAL CONCRETE.
6 STOREYS BASEMENT: 44,468.50 FT².
HEIGHT: 66.54 FT.
LOCATION: ZAPOPAN, JALISCO.**



DOS BOCAS

**OFFICES & CENTRAL CONTROL ROOM.
3 STOREYS: 132,111.06 FT².
HEIGHT: 55.77 FT.
LOCATION: PARAISO, TABASCO.**

COMMERCIAL CONSTRUCTION



PUNTO POLANCO

STRUCTURAL CONCRETE.
8 STOREYS BASEMENT: 513,069.08 FT².
20 STOREYS BUILDING: 519,126.96 FT².
HEIGHT: 291.99 FT.
LOCATION: MIGUEL HIDALGO, CDMX.
OWNER: GFA GRUPO INMOBILIARIO.



CORPORATE QUERETARO 1 & 2

STRUCTURAL CONCRETE.
1 PARKING BASEMENT: 871,560 FT².
23 STOREYS TOWER: 201,319.60 FT².
HEIGHT: 265.75 FT.
LOCATION: QUERETARO, QUERETARO.
OWNER: CITICAPITAL.



HIGH PARK QUERETARO CORPORATE

STRUCTURAL CONCRETE.
1 BASEMENT: 120,436.68 FT².
TOWER 100: 24 STOREYS + 1 HELIPORT:
340,016.00 FT².
HEIGHT: 301.18 FT.
LOCATION: QUERETARO, QUERETARO.
OWNER: CITICAPITAL.

COMMERCIAL CONSTRUCTION



CASINO CAPRI

**CASINO & PARKING LOT.
AREA: 60,342.08 FT².
LOCATION: GUADALAJARA, JALISCO. OWNER:
OPTIMUS INMOBILIARIA S.A. DE C.V.**



PUERTA VALLARTA (PUNTO BANDERAS)

**STRUCTURAL CONCRETE.
1 PARKING BASEMENT: 59,362.92 FT².
7 STOREYS TOWER: 214,285.40 FT².
HEIGHT: 113.52 FT.
LOCATION: PUERTO VALLARTA, JALISCO.
OWNER: ATRIUM DE VALLARTA, S.A. DE C.V.**

FASHION MALL

**GRAN PLAZA EXPANSION.
SURFACE: 215,200 FT².
LOCATION: ZAPOPAN, JALISCO.
OWNER: CONDOMINIO LA GRAN PLAZA, S.C.**



COMMERCIAL CONSTRUCTION



TOYOTA LÓPEZ MATEOS

POST-TENSIONED STRUCTURAL CONCRETE.
SURFACE: 45,009.08 FT².
LOCATION: ZAPOPAN, JALISCO.
OWNER: DALTON AUTOMOTRIZ, S.A. DE C.V.



TOYOTA ACUEDUCTO

CAR AGENCY.
AREA: 86,080.00 FT².
LOCATION: ZAPOPAN, JALISCO.
OWNER: MOSAICO INMOBILIARIA.



SEAT ACAPULCO

OFFICES.
AREA: 43,040.00 FT².
LOCATION: ACAPULCO, GUERRERO.
OWNER: GRUPO AUTOFIN DE MEXICO.



HONDA EXCELENCIA

OFFICES
SURFACE: 35520.9 FT².
LOCATION: GUADALAJARA, JALISCO.
OWNER: DALTON AUTOMOTRIZ S.A. DE C.V.

COMMERCIAL CONSTRUCTION



TOYOTA PATRIA

CAR AGENCY.

AREA: 80,441.76 FT².

LOCATION: ZAPOPAN, JALISCO.

OWNER: DALTON TOYOTA. S.A. DE C.V.



PUERTO PEÑASCO

BALL HALL.

HOTEL PEÑASCO DEL SOL.

AREA: 7,962.40 FT².

LOCATION: PUERTO PEÑASCO, SONORA.



EDUCARE

SCHOOL SPORTS AREA.

LOCATION: ZAPOPAN, JALISCO.

OWNER: OMNITRITION DE MEXICO.

PROJECT BY: ENRIQUE NORTEN.



HOUSING CONSTRUCTION

HOUSING CONSTRUCTION



TORRE PARADOX

STRUCTURAL CONCRETE.
7 STOREYS BASEMENT: 95,199.96 FT².
54 STOREYS TOWER: 771,153.06 FT².
HEIGHT: 637.80 FT.
LOCATION: CUAJIMALPA, CDMX.
OWNER: PENINSULA.



TORRE NIBA

STRUCTURAL CONCRETE.
6 STOREYS BASEMENT: 254,689.20 FT².
29 STOREYS TOWER: 352,411.52 FT².
HEIGHT: 407.48 FT.
LOCATION: GUADALAJARA, JALISCO.



PUERTA LAS LOMAS

STRUCTURAL CONCRETE & FINISHES.
2 TOWERS.
3 STOREYS BASEMENT EA.: 121,082.28 FT².
16 STOREYS TOWER: 92,030.28 FT².
HEIGHT: 198.49 FT.
LOCATION: ZAPOPAN, JALISCO.
OWNER: C&C CAPITAL.

HOUSING CONSTRUCTION



CONDOMINIO DOLMEN

STRUCTURAL CONCRETE.
3 STOREYS BASEMENT: 26,206.41 FT².
11 STOREYS TOWER: 58,866.99 FT².
HEIGHT: 139.11 FT.
LOCATION: ZAPOPAN, JALISCO.



HIDALGO

STRUCTURAL CONCRETE.
3 STOREYS BASEMENT: 84,153.96 FT².
20 STOREYS TOWER+ HELIPORT: 252,989.12 FT².
HEIGHT: 225.56 FT.
LOCATION: GUADALAJARA, JALISCO.
OWNER: PENINSULA.



MAR JONICO

STRUCTURAL CONCRETE.
3 STOREYS BASEMENT: 41,278.48 FT².
16 STOREYS TOWER: 72,420.07 FT².
HEIGHT: 230.64 FT.
LOCATION: GUADALAJARA, JALISCO.

HOUSING CONSTRUCTION



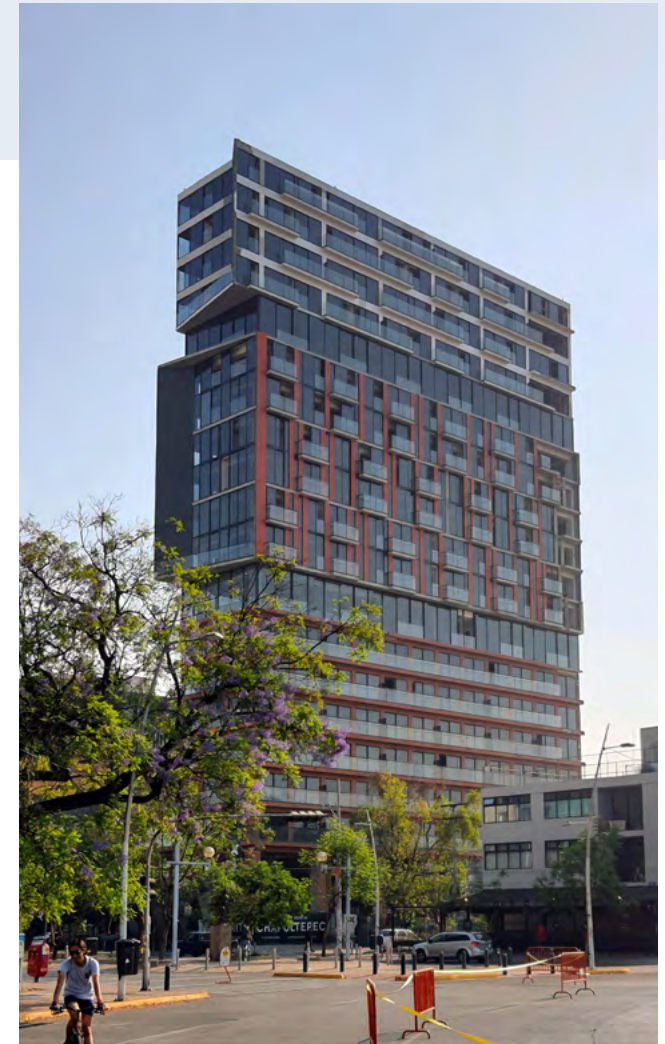
WEST POINT

STRUCTURAL CONCRETE.
3 STOREYS BASEMENT: 82,851.46 FT².
18 STOREYS TOWER: 141,556.19 FT².
HEIGHT: 229.66 FT.
LOCATION: ZAPOPAN, JALISCO.
OWNER: IMMOBILIARE PROPERTIES, S.A. DE C.V.



GARIBALDI

STRUCTURAL CONCRETE.
4 STOREYS BASEMENT: 45,548.37 FT².
26 STOREYS TOWER: 158,679.98 FT².
HEIGHT: 274.93 FT.
LOCATION: GUADALAJARA, JALISCO.
OWNER: PENINSULA.



DISTRITO CHAPULTEPEC

STRUCTURAL CONCRETE.
3 STOREYS BASEMENT: 43,622.55 FT².
20 STOREYS TOWER: 210,602.47 FT².
HEIGHT: 231.63 FT.
LOCATION: GUADALAJARA, JAL.
OWNER: PENINSULA.



CENTRAL PARK GUADALAJARA

STRUCTURAL CONCRETE.
2 STOREYS BASEMENT: 31,520.34 FT².
28 STOREYS TOWER: 220,425.06 FT².
HEIGHT: 302.10 FT.
LOCATION: GUADALAJARA, JALISCO.
OWNER: CITICAPITAL.



RINCONADA MARGARITAS

STRUCTURAL CONCRETE.
4 STOREYS BASEMENT: 342,824.36 FT².
15 STOREYS TOWER: 468,877.76 FT².
HEIGHT: 191.93 FT.
LOCATION: GUADALAJARA, JALISCO.
OWNER: CUBE RESIDENCIAL, S.A. DE C.V.

HOUSING CONSTRUCTION



ESPACIO YAQUIS

STRUCTURAL CONCRETE.
4 STOREYS BASEMENT: 117,402.36 FT².
16 STOREYS TOWER: 139,277.44 FT².
HEIGHT: 187.99 FT.
LOCATION: GUADALAJARA, JALISCO.
OWNER: DALTON CORPORATIVO.



GALATEA

STRUCTURAL CONCRETE.
3 STOREYS BASEMENT: 61,913 FT².
23 STOREYS TOWER: 152,017 FT².
HEIGHT: 296.59 FT.
LOCATION: GUADALAJARA, JALISCO.
OWNER: CITICAPITAL.



NEREA

STRUCTURAL CONCRETE.
3 STOREYS BASEMENT: 58,610 FT².
TOWER 100 - 21 STOREYS: 68,595 FT².
TOWER 200 - 17 STOREYS: 51,078 FT².
HEIGHT: 219.82 FT.
LOCATION: GUADALAJARA, JALISCO.
OWNER: CITICAPITAL.

HOUSING CONSTRUCTION



CIMA PARK T300, T400, T500

STRUCTURAL CONCRETE.

T300 1 BASEMENT: 8,637.05 FT²

15 STOREYS TOWER: 145,918.62 FT².

T300 HEIGHT: 158.46 FT.

T400 1 BASEMENT: 7,882.24 FT².

15 STOREYS TOWER: 145,472.62 FT².

HEIGHT: 48.30 FT.

T500 2 STOREYS BASEMENT: 48,675.23 FT².

15 STOREYS TOWER: 187,377.55 FT².

HEIGHT: 159.74 FT.

LOCATION: ZAPOPAN, JALISCO.

OWNER: CITICAPITAL.



URBANIA

STRUCTURAL CONCRETE.

2 STOREYS BASEMENT: 10,404.92 FT².

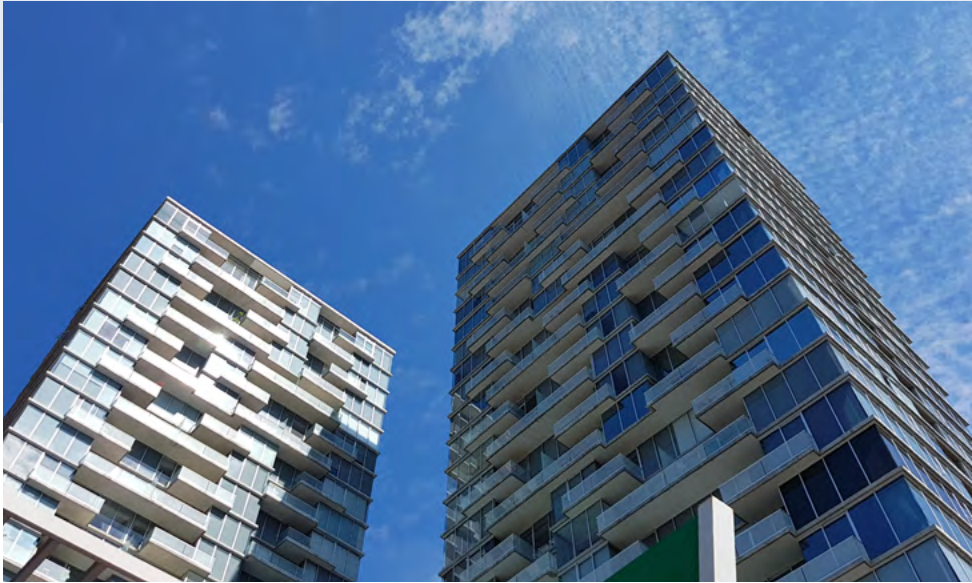
21 STOREYS TOWER: 215,350.64 FT².

HEIGHT: 219.49 FT.

LOCATION: ZAPOPAN, JALISCO.

OWNER: CITICAPITAL.

HOUSING CONSTRUCTION



CITITOWER

STRUCTURAL CONCRETE.
3 STOREYS BASEMENT: 160,840.48 FT².
3 STOREYS COMMERCIAL AREA &
23 STOREYS TOWER: 585,526.92 FT².
HEIGHT: 283.14 FT.
LOCATION: GUADALAJARA, JALISCO.
OWNER: CITICAPITAL.



VISTA MAGNA

STRUCTURAL CONCRETE.
BUILDINGS: 2
4 STOREYS BASEMENT: 172,224 FT².
14 STOREYS TOWER: 82,787 FT².
TOTAL AREA: 255,012 FT².
LOCATION: ZAPOPAN, JALISCO.
OWNER: ROCHER HOLDINGS.



ESTRELA LIVING

STRUCTURAL CONCRETE.
1 BASEMENT: 72,363.80 FT².
2 TOWERS - 9 STOREYS: 94,700.48 FT².
HEIGHT: 87.60 FT.
LOCATION: ZAPOPAN, JALISCO.
OWNER: INDEA. LOCATION: GUADALAJARA, JALISCO.
OWNER: INMOBILIARIA LOS PATOS.

HOUSING CONSTRUCTION



CAUDA

STRUCTURAL CONCRETE.
2 STOREYS BASEMENT: 87,400.68 FT².
12 STOREYS TOWER: 181,101.56 FT².
HEIGHT: 437.01 FT.
LOCATION: GUADALAJARA, JALISCO.



TORRE ZUNO

STRUCTURAL CONCRETE.
5 STOREYS BASEMENT: 30,051.93 FT².
15 STOREYS TOWER: 54,675.54 FT².
HEIGHT: 199.15 FT.
LOCATION: GUADALAJARA, JALISCO.
PROJECT: CRAFT ARQUITECTOS.



CIMA 300

STRUCTURAL CONCRETE.
14 STOREYS TOWER: 149,026 FT².
HEIGHT: 147.64 FT.
LOCATION: ZAPOPAN, JALISCO.
OWNER: CITICAPITAL.

HOUSING CONSTRUCTION



PARQUE SAN JAVIER T100 / T200

STRUCTURAL CONCRETE.

2 TOWERS.

4 STOREYS EACH TOWER: 24,467.81 FT² EA.

21 STOREYS + 1 HELIPORT EACH TOWER: 177,730.56 FT² EA.

HEIGHT: 232.28 FT.

LOCATION: ZAPOCAN, JALISCO.

OWNER: PENINSULA.



MONRAZ

STRUCTURAL CONCRETE.

2 TOWERS.

2 STOREYS BASEMENT: 72,812.92 FT².

10 STOREYS TOWER + COMMON AREAS: 68,530.44 FT².

HEIGHT: 123.20 FT.

LOCATION: GUADALAJARA, JALISCO.



CONDOMINIUM COUNTRY CLUB

STRUCTURAL CONCRETE.
5 STOREYS BASEMENT: 105,448.00 FT².
34 STOREYS TOWER: 89,502.00 FT².
HEIGHT: 383.20 FT.
LOCATION: GUADALAJARA, JALISCO.
OWNER: C&C CAPITAL.



HABITAT ARBOLEDA

STRUCTURAL CONCRETE.
2 STOREYS BASEMENT: 22,789.68 FT².
8 STOREYS TOWER: 136,974.80 FT².
HEIGHT: 137.01 FT.
LOCATION: GUADALAJARA, JALISCO.
OWNER: DESARROLLO ARBOLEDAS S.A. DE C.V.



SONATA

STRUCTURAL CONCRETE.
3 STOREYS BASEMENT: 44,298.49 FT².
8 STOREYS TOWER: 72,257.81 FT².
HEIGHT: 94.98 FT.
LOCATION: GUADALAJARA, JAL.

HOUSING CONSTRUCTION



PENINSULA ARCOS SANTA FE

STRUCTURAL CONCRETE.
6 STOREYS BASEMENT: 78,900.28 FT².
34 STOREYS TOWER: 357,186.49 FT².
HEIGHT: 347.44 FT.
LOCATION: CUAJIMALPA, CDMX.
OWNER: CITICAPITAL.
ARCHITECT: TEDDORO GONZALEZ DE LEON.



PENINSULA SANTA FE II

STRUCTURAL CONCRETE.
6 STOREYS BASEMENT: 34,780.62 FT².
44 STOREYS TOWER: 285,120.63 FT².
HEIGHT: 526.90 FT.
LOCATION: CUAJIMALPA, CDMX.
OWNER: PENINSULA.



PENINSULA SANTA FE TORRE 300

STRUCTURAL CONCRETE.
7 STOREYS BASEMENT: 43,848.40 FT².
51 STOREYS TOWER: 407,790.55 FT².
HEIGHT: 493.44 FT.
LOCATION: CUAJIMALPA, CDMX.
OWNER: PENINSULA.
PROJECT: TEDDORO GONZALEZ DE LEON.



PENINSULA NUEVO MAZATLAN

STRUCTURAL CONCRETE.
1 BASEMENT: 13,944.96 FT².
29 STOREYS TOWER: 500,340.00 FT².
HEIGHT: 278.54 FT.
LOCATION: MAZATLAN, SINALOA.
OWNER: PENINSULA.



CENTRAL PARK 100. 200 Y 300

STRUCTURAL CONCRETE.
1 BASEMENT: 7,047.80 FT².
23 STOREYS TOWER: 213,435.36 FT².
HEIGHT: 247.70 FT.
LOCATION: QUERETARO, QUERETARO.
OWNER: CITICAPITAL.



**HIGH PARK QUERETARO
RESIDENCIAL**

STRUCTURAL CONCRETE.
RESIDENTIAL TOWERS: 4.
4 STOREYS BASEMENT: 17,666.84 FT².
24 STOREYS TOWER: 203,266.84 FT².
HEIGHT: 241.80 FT.
LOCATION: QUERETARO, QUERETARO.
OWNER: CITICAPITAL.

HOUSING CONSTRUCTION



BOLONGO FASES I Y II

STRUCTURAL CONCRETE.

PHASE I:

2 STOREYS BASEMENT: 44,438.80 FT².

5 STOREYS TOWER: 235,159.80 FT².

PHASE II:

1 BASEMENT: 46,369.79 FT².

7 STOREYS TOWER: 226,748.17 FT².

HEIGHT: 284.06 FT.

LOCATION: BAHIA DE BANDERAS, NAYARIT.

OWNER: PENINSULA.



MARE

STRUCTURAL CONCRETE.

22 STOREYS TOWER: 384,797.83 FT².

HEIGHT: 214.90 FT.

LOCATION: ACAPULCO, GUERRERO.

OWNER: PENINSULA.

HOUSING CONSTRUCTION



SOHO HOUSE PUERTO VALLARTA

STRUCTURAL CONCRETE.

16 STOREYS TOWER: 223,950.68 FT².

HEIGHT: 229.95 FT.

LOCATION: PUERTO VALLARTA, JALISCO.

OWNER: FIFTY SEVEN CAPITAL GROUP.



MARITIMA

PHASES 1 & 2

STRUCTURAL CONCRETE.

1 BASEMENT: 23,647.79 FT².

11 STOREYS TOWER: 274,380.97 FT².

HEIGHT: 45.40 FT.

LOCATION: FLAMINGOS. BUCERIAS, NAYARIT.

OWNER: PENINSULA.

HOUSING CONSTRUCTION



PENINSULA IXTAPA

STRUCTURAL CONCRETE.
18 STOREYS HOUSING: 309,350 FT².
2 STOREYS COMMERCIAL: 42,739 FT².
HEIGHT: 187.01 FT.
LOCATION: IXTAPA, ZIHUATANEJO.
OWNER: PENÍNSULA.



AVENTO

STRUCTURAL CONCRETE.
19 STOREYS TOWER: 379,074.80 FT².
HEIGHT: 212.27 FT.
LOCATION: ACAPULCO, GUERRERO.
OWNER: FRONDOSO GRUPO INMOBILIARIO.

HOUSING CONSTRUCTION



PENINSULA NARVAL

**STRUCTURAL CONCRETE.
2 BUILDINGS.
2 STOREYS BASEMENT: 72,124.28 FT².
7 STOREYS TOWER: 123,987.48 FT².
HEIGHT: 72.18 FT.
LOCATION: BUCERIAS, NAYARIT.
OWNER: CITICAPITAL.**



MARITIMA GOLF & VILLAS

**STRUCTURAL CONCRETE.
1 BASEMENT: 15,851.31 FT².
9 STOREYS TOWER: 98,023.38 FT².
HEIGHT: 105.48 FT.
20 HOUSES: 30,120.68 FT² EA.
LOCATION: BUCERIAS, NAYARIT.
OWNER: PENINSULA.**

NAUTICO NUEVO VALLARTA

**STRUCTURAL CONCRETE.
1 BASEMENT: 16,066.19 FT².
5 STOREYS TOWER: 53,265.66 FT².
HEIGHT: 60.20 FT.
LOCATION: NUEVO VALLARTA, NAYARIT.
OWNER: PENINSULA.**



HOUSING CONSTRUCTION



LA ISLA - CAPRI

STRUCTURAL CONCRETE.

1 BASEMENT: 49,933.72 FT².

11 STOREYS TOWER: 307,195.63 FT².

HEIGHT: 137.14 FT.

LOCATION: ACAPULCO, GUERRERO.

OWNER: PENINSULA.



LA ISLA - EMERALD

STRUCTURAL CONCRETE.

15 STOREYS TOWER: 299,848.92 FT².

HEIGHT: 158.79 FT.

LOCATION: ACAPULCO, GUERRERO.

OWNER: PENINSULA.



LA ISLA - FIJI

STRUCTURAL CONCRETE.

15 STOREYS TOWER: 329,858.56 FT².

HEIGHT: 154.79 FT.

LOCATION: ACAPULCO, GUERRERO.

OWNER: PENINSULA.

HOUSING CONSTRUCTION



PENINSULA DIAMANTE

STRUCTURAL CONCRETE.
1 BASEMENT: 9,239.07 FT².
24 STOREYS TOWER: 260,017.55 FT²
HEIGHT: 235.66 FT.
LOCATION: ACAPULCO, GUERRERO.
OWNER: PENINSULA.



PENINSULA NUEVO VALLARTA

STRUCTURAL CONCRETE.
10 STOREYS BUILDING: 619,754 FT².
HEIGHT: 157.15 FT.
LOCATION: NUEVO VALLARTA, NAYARIT.
OWNER: PENINSULA.

HOUSING CONSTRUCTION



MAR DE MITA

STRUCTURAL CONCRETE.

2 STOREYS BASEMENT: 15,137.60 FT².

4 STOREYS TOWER: 27,052.47 FT².

HEIGHT: 56.59 FT.

**LOCATION: PUNTA MITA, BAHIA DE BANDERAS.
NAYARIT.**

OWNER: PUNTA BRISSA S.A. DE C.V.



NAUTICO

STRUCTURAL CONCRETE.

1 BASEMENT: 10,781.52 FT².

14 STOREYS TOWER: 98,927.44 FT².

HEIGHT: 156.82 FT.

LOCATION: PUERTO VALLARTA, JALISCO.

OWNER: PENINSULA.



VELERA

STRUCTURAL CONCRETE.

2 STOREYS BASEMENT: 142,677.60 FT².

23 STOREYS TOWER: 322,800.00 FT².

HEIGHT: 262.47 FT.

LOCATION: ACAPULCO, GUERRERO.

OWNER: PENINSULA.



TORRE ANCORA

STRUCTURAL CONCRETE.
1 BASEMENT: 9,732.64 FT².
8 STOREYS TOWER: 49,158.14 FT².
HEIGHT: 71.72 FT.
LOCATION: PUNTA DE MITA, NAYARIT.



PUERTA TLALNEPANTLA

STRUCTURAL CONCRETE.
3 STOREYS BASEMENT: 60,371.67 FT².
12 STOREYS TOWER: 112,227.77 FT².
HEIGHT: 152.23 FT.
LOCATION:
TLALNEPANTLA DE BAZ, ESTADO DE MEXICO.



AVENUE POLANCO

STRUCTURAL CONCRETE.
TOWERS: 6.
4 STOREYS BASEMENT EA.: 168,264.88 FT².
10 STOREYS TOWERS: 327,416.04 FT².
HEIGHT: 132.87 FT.
LOCATION: MIGUEL HIDALGO, CDMX.
OWNER: PROMOTORA GFH S.A.P.I. DE C.V.

HOUSING CONSTRUCTION



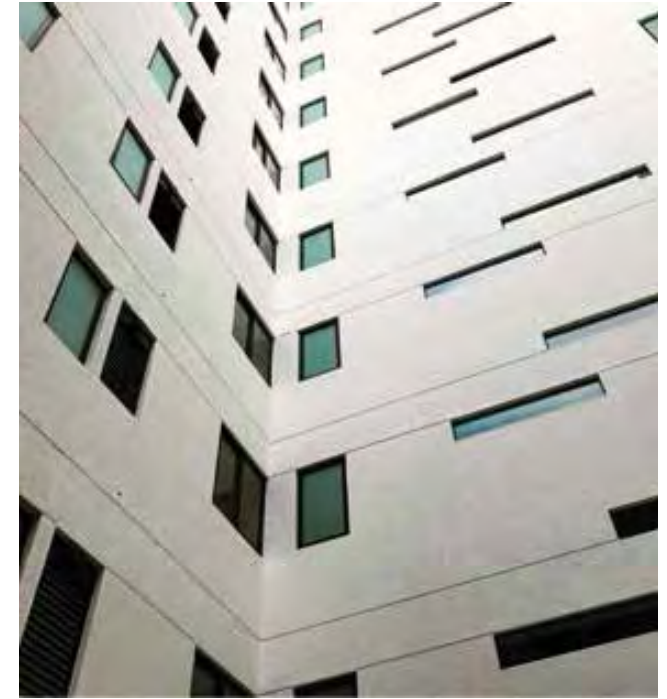
ORIGINA PEDREGAL

STRUCTURAL CONCRETE.
4 STOREYS BASEMENT: 301,280.00 FT².
33 STOREYS TOWER: 681,472.44 FT².
HEIGHT: 419.42 FT.
LOCATION: TLALPAN, CDMX.
PROJECT BY: SMA.



SAN ANTONIO 95

STRUCTURAL CONCRETE.
3 STOREYS BASEMENT: 41,856.40 FT².
12 STOREYS TOWER: 94,774.08 FT².
HEIGHT: 145.18 FT.
LOCATION: BENITO JUAREZ, CDMX.
OWNER: ESTRATEGIA URBANA.



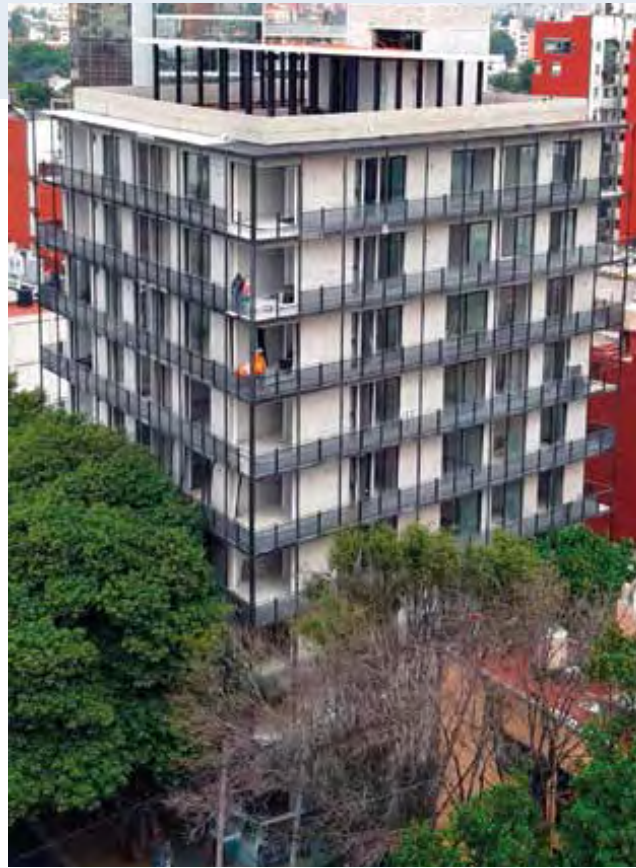
UNIVERSIDAD 1943

STRUCTURAL CONCRETE.
4 STOREYS BASEMENT: 57,964.12 FT².
TOWER 100: 66,765.80 FT².
TOWER 200: 60,557.28 FT².
HEIGHT: 135.17 FT.
LOCATION: COYOACAN, CDMX.
OWNER: AURI.



CORE 31 - LA CUSPIDE

STRUCTURAL CONCRETE.
3 STOREYS BASEMENT: 62,889.94 FT².
33 STOREYS TOWER: 173,096.98 FT².
HEIGHT: 415.03 FT.
LOCATION: HUIXQUILUCAN, EDO. DE MEXICO.



SAN ANTONIO 88

STRUCTURAL CONCRETE.
3 STOREYS PARKING BASEMENT: 16,563.30 FT².
9 STOREYS TOWER: 35,807.45 FT².
HEIGHT: 114.04 FT.
LOCATION: BENITO JUAREZ, CDMX.



PRIVADA 14

STRUCTURAL CONCRETE.
2 STOREYS PARKING BASEMENT: 112,194.52 FT².
10 STOREYS HOUSING TOWER: 555,000.80 FT².
HEIGHT: 124.02 FT.
LOCATION: CUAJIMALPA, CDMX.
OWNER: GFA GRUPO INMOBILIARIO.

HOUSING CONSTRUCTION



VIA INTERLOMAS

STRUCTURAL CONCRETE.
26 STOREYS TOWER: 228,725.00 FT².
HEIGHT: 896.85 FT.
LOCATION: HUIXQUILUCAN, EDD. DE MEXICO.
PROPIETARIO: PENINSULA.



HORACIO 1716 GARDEN POLANCO

STRUCTURAL CONCRETE.
2 BASEMENT STOREYS: 33,678.80 FT².
6 STOREYS TOWER: 72,845.20 FT².
HEIGHT: 71.19 FT.
LOCATION: CDMX.



SAN JERONIMO 428

PARKING.
STRUCTURAL CONCRETE.
7 STOREYS BASEMENT: 134,619.97 FT².
LOCATION: CDMX.

HOUSING CONSTRUCTION



MIRADOR LA PAZ

STRUCTURAL CONCRETE.
3 STOREYS BASEMENT: 46,969.44 FT².
12 STOREYS TOWER: 72,765.36 FT².
HEIGHT: 144.16 FT.
LOCATION: GUADALAJARA, JALISCO.
OWNER: INDEA.



TIZATE

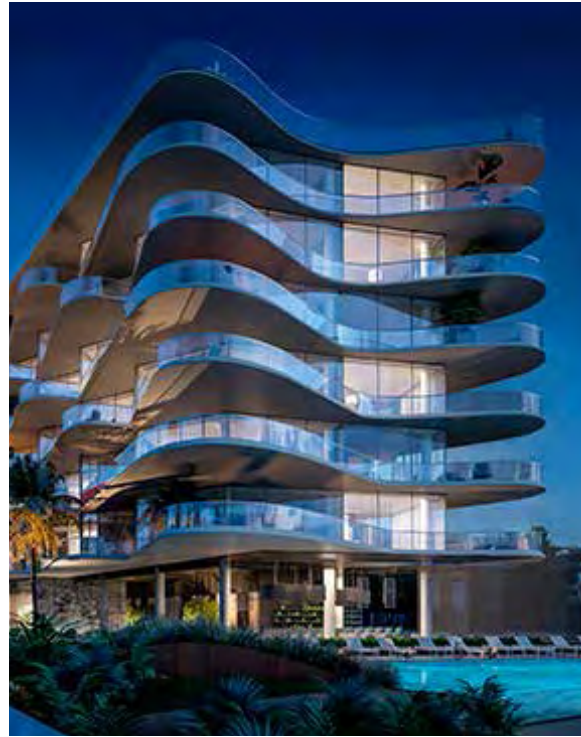
TOWER 100.
WORKS COMPLETE / STRUCTURAL CONCRETE.
1 BASEMENT: 9168.7 FT².
7 STOREYS TOWER: 102647.23 FT².
HEIGHT: 91.86 FT.
TOWER 200.
CONCRETE STRUCTURE.
1 BASEMENT: 12206.27 FT².
5 STOREYS TOWER: 31183.05 FT².
HEIGHT: 91.86 FT.
LOCATION: NUEVO VALLARTA, NAYARIT.
OWNER: PENINSULA.

HOUSING CONSTRUCTION



CANEA

**EXCAVATION. STRUCTURAL CONCRETE.
1 BASEMENT: 4,641.65 FT².
11 STOREYS TOWER: 42,938.10 FT².
HEIGHT: 125.98 FT.
LOCATION: PUERTO VALLARTA, JALISCO.
OWNER: PENINSULA.**



TAYAU

**STRUCTURAL CONCRETE.
1 BASEMENT: 7,757.74 FT².
8 STOREYS TOWER: 58,630.27 FT².
HEIGHT: 94.98 FT.
LOCATION: BUCERIAS, NAYARIT.
OWNER: PENINSULA.**



**CONDOMINIUM COUNTRY
PARKING**

**STRUCTURAL CONCRETE.
5 STOREYS PARKING BASEMENT:
112,980.00 FT².
LOCATION: GUADALAJARA, JALISCO.
OWNER: C&C CAPITAL.**

INDUSTRIAL CONSTRUCTION



INDUSTRIAL CONSTRUCTION



CEDROS JALISCO BUSINESS PARK

**OFFICES BUILDING.
AREA: 30,558 FT².**

**DESCRIPTION: AIR CONDITIONING.
AREA: 528,445 FT².
LOCATION: TLAQUEPAQUE, JALISCO.
OWNER: FIDEICOMISO BANSI, S.A.**



EMERSON WAREHOUSE

**INDUSTRIAL FACILITIES.
BUILDING APPROVED BY: FMG (FACTORY
MUTUAL GLOBAL).
LOCATION: GUADALAJARA, JALISCO.
AREA: 174,096 FT².
EXPANSION AREA: 49,926 FT².
OWNER: LAPISLAZULI INDUSTRIAL.
ARCHITECT: RAFAEL ZALDO JAIMES.**



PAN BUENO

**INDUSTRIAL BAKERY.
AREA: 75,320.00 FT².
LOCATION: TECHNOLOGY PARK. ZAPOPAN,
JALISCO.
OWNER: MA. ISABEL CORNEJO**

INDUSTRIAL CONSTRUCTION



BELENES INDUSTRIAL FACILITIES

INDUSTRIAL FACILITIES AREA: 34,432 FT².
OFFICES AREA: 2,582 FT².
LOCATION: ZAPOPAN, JALISCO.
OWNER: SAHA, S.A. DE C.V.



CEDIS CULIACÁN

INDUSTRIAL FACILITIES.
AREA: 134,500.00 FT².
LOCATION: CULIACAN, SINALOA.
OWNER: ALBERTO HAWA Y FRANCISCO
BORREGO.



CENTRO DE DISTRIBUCIÓN FAMSA

WAREHOUSE.
AREA: 139,880.00 FT².
LOCATION: TLAQUEPAQUE, JALISCO.
OWNER: ORGANIZACION MAXIMA.

INDUSTRIAL CONSTRUCTION



LLAVES ALTUNA

**INDUSTRIAL FACILITIES WITH POST-TENSIONED.
LOCATION: ZAPOPAN, JALISCO.
INDUSTRIAL WAREHOUSE SURFACE: 37,660.00 FT².
OWNER: LLAVES ALTUNA.**



ECOPARK

**DEVELOPEMENT INDUSTRIAL PARK
& INDUSTRIAL FACILITIES
AREA: 328,330 FT².
LOCATION: ZAPOPAN, JALISCO.**

INDUSTRIAL CONSTRUCTION



GARBAGE TRANSFER PLANT

STEEL STRUCTURE WAREHOUSE.
AREA: 63,484 FT².
LOCATION: TLAQUEPAQUE, JALISCO.
OWNER: HASAR'S.



NAVES INDUSTRIALES PARRAS IV Y V

INDUSTRIAL FACILITIES AREA: 128,044 FT².
OFFICES AREA: 6,456 FT².
LOCATION: GUADALAJARA, JALISCO.
OWNER: SAHA S.A. DE C.V.



NAVE ESTEVEZ

AREA: 6,456 FT².
LOCATION: EL SALTO, JALISCO.
OWNER: HELIOS ESTEVEZ PEREZ.



CARLOS MERIDA 53
LOMAS DEL COLLI
ZAPOPAN, JALISCO.
45010
MEXICO