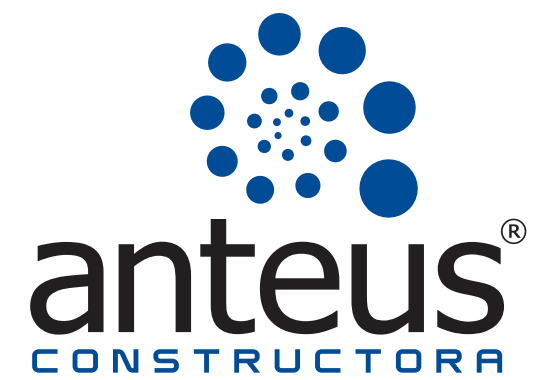




PRESLABS



GENERAL FEATURES

Losas Is a system which consists in concrete slab fabrication outside the construction site with a bigger load capacity and covering longer spaces.

The slab fabrication is completely automated and made over steel surfaces.

The concrete has a resistance of 4,267 or 4,978 or 5,689 psi depending calculations.

The steel cables and strands are of different diameters, according to calculations, of high strength stabilized No curvature.

Rough top face for greater adhesion of concrete.

Lower face smooth and fine prepared for painting.

Fire resistance is defined based on to the total thickness of the slab and cladding of the main assembly.

PLAZA PATRIA

GENERAL FEATURES

Standard width 1,18 m.

The thickness of the pre-slab can be 6, 7, 8 or 10 cm, depending on the needs of each work, the same happens with the cast in place compression layer.

Large = bespoke.

Shoring every 2.00 meters on 6 and 7 cm pre-slabs; every 3.8 metres in 10 cm pre-slabs.

There is a saving in formwork.

There are solid slabs and lightened slabs.

The system can be unidirectional or bidirectional.



BANSI

USES

The application of the pre-slab can be used on roofs and mezzanines supported by any type of structure (concrete, metal and load-bearing wall)

CIVIL WORKS

PARKING LOTS

HOTELS

HOSPITALS

INDUSTRIAL FACILITIES

WAREHOUSES

TUNNELS



PARKING

MONOLITHIC UNIONS

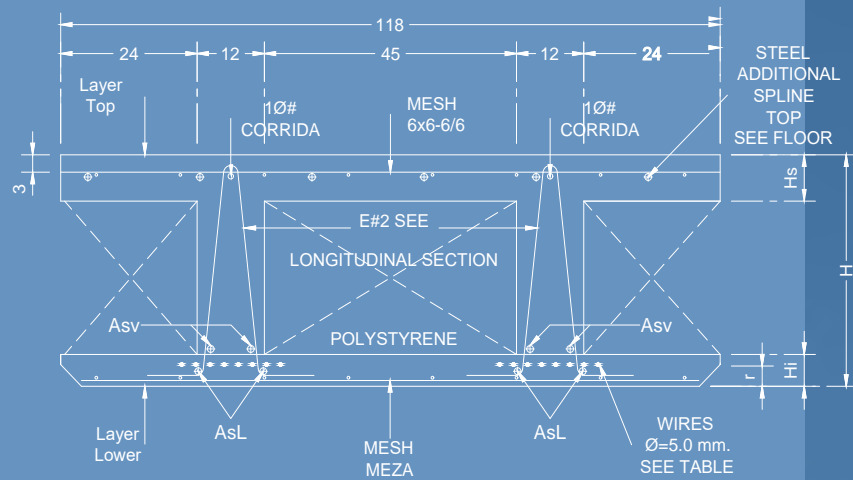
APPARENTS DETAILS

CLEANING

TIME SAVING

OPTIMAL INSULATION THER-
MAL AND ACOUSTIC BE-
TWEEN FLOORS.

PRE - SLABS

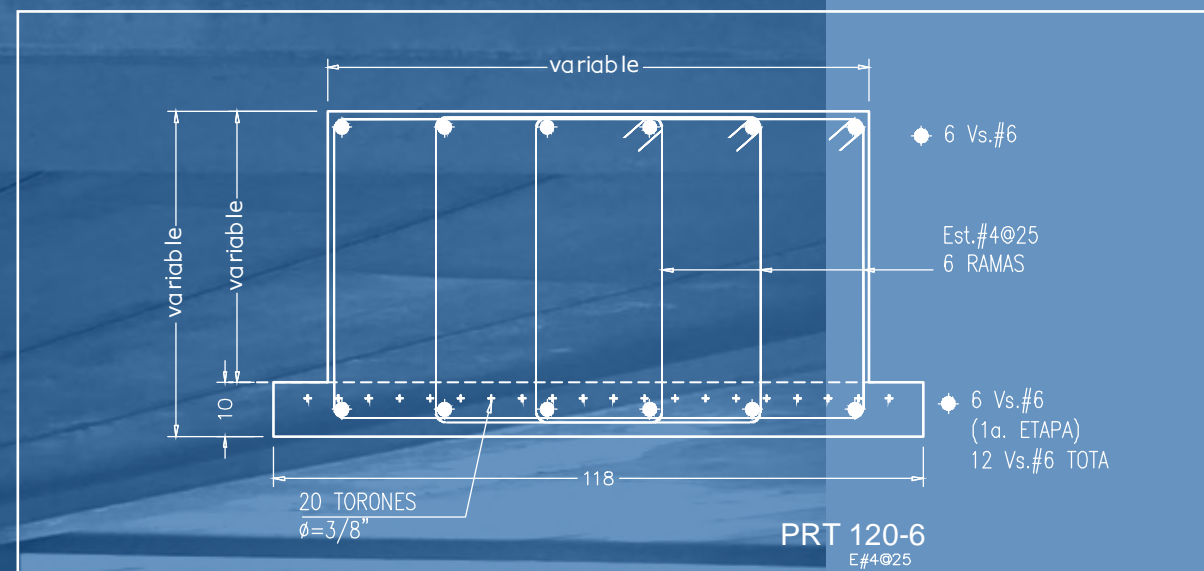


PRE-SLAB TYPE SECTION

SCALE 1:10
SEE CONTINUITY STEEL IN PLANT

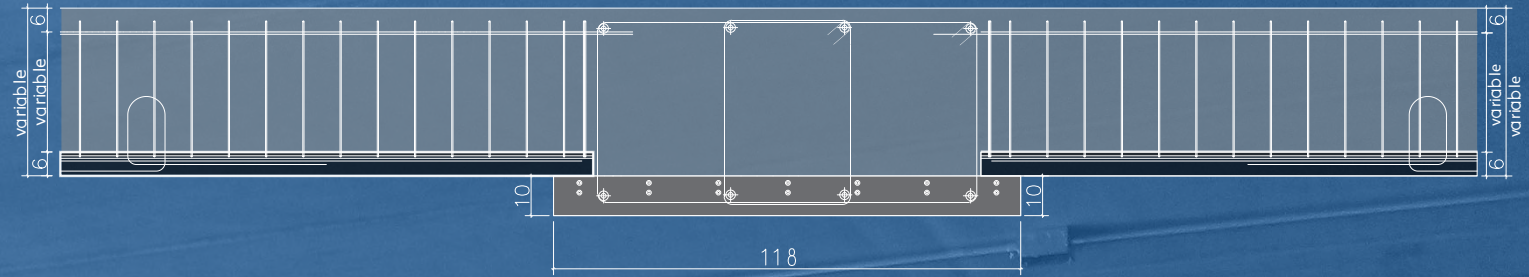


PRETRABE



LANDMARK

UNION DETAIL PRETRABE - PRESLABS



Increased load capacity and
Less cant than a normal beam

System with the same advantages
offered by the pre-slabs

Monolithic and continuous bonding



LOAD TESTING
MADE IN THE PLANT



LA DURAZNERA, TLAQUEPAQUE JAL.

SELF-SUPPORTING PRETRABE



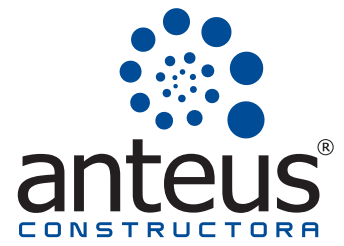
SELF-SUPPORTING PRESLABS FOR TUNNELS,
OVERPASSES AND BRIDGES.

CASTING WITHOUT THE NEED FOR SHORING.

CONSTRUCTION PROCESS

Manufacturing in
Anteus Precast Plant





CONSTRUCTION PROCESS

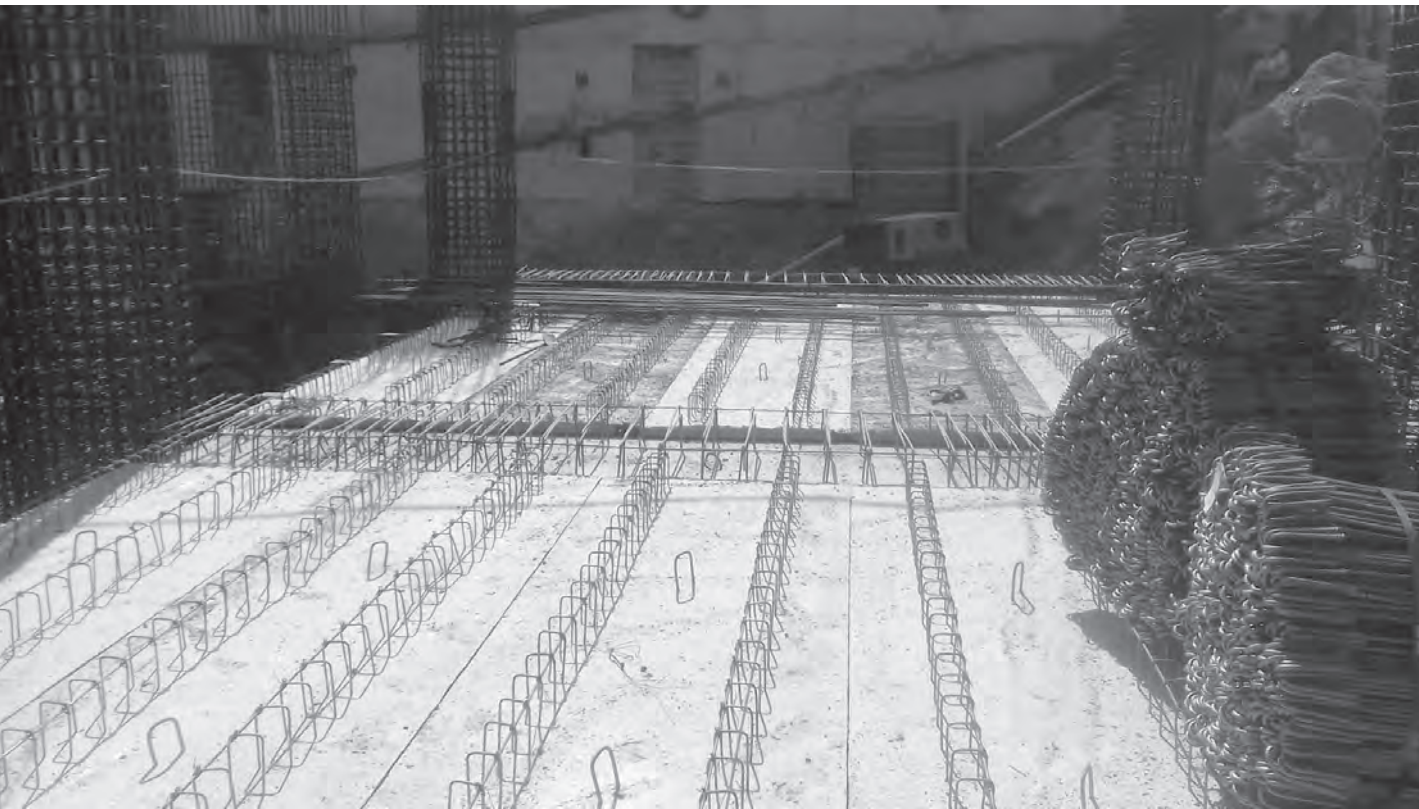
Delivery of PRE-SLABS





CONSTRUCTION PROCESS

Placement of PRE-SLABS



CONSTRUCTION PROCESS

Placement of PRE-SLABS

CONSTRUCTION PROCESS

Underpinning

GALERIAS GDL



CONSTRUCTION PROCESS

Once the PRE-SLAB has been laid,
The transverse nerve that serves as the
element that provides rigidity and serves as a bond
among the PRE-SLABS

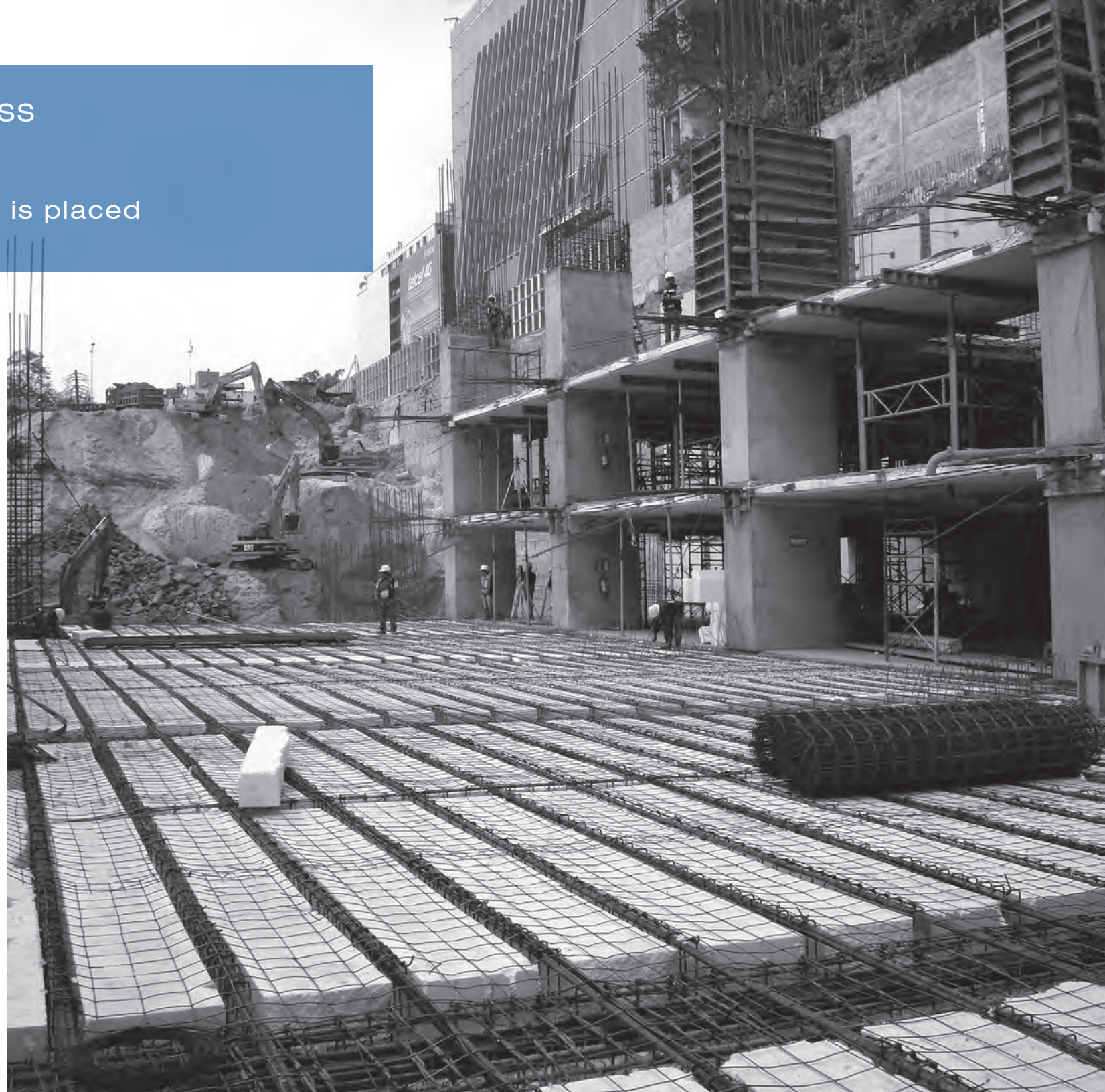
CONSTRUCTION PROCESS

With transverse nerve
Placed, it gets
Polystyrene

CONSTRUCTION PROCESS

ARMED

The upper armed reinforcement is placed





CONSTRUCTION PROCESS

ARMED

The upper armed reinforcement is placed



CONSTRUCTION PROCESS

CONCRETE
The concrete is poured

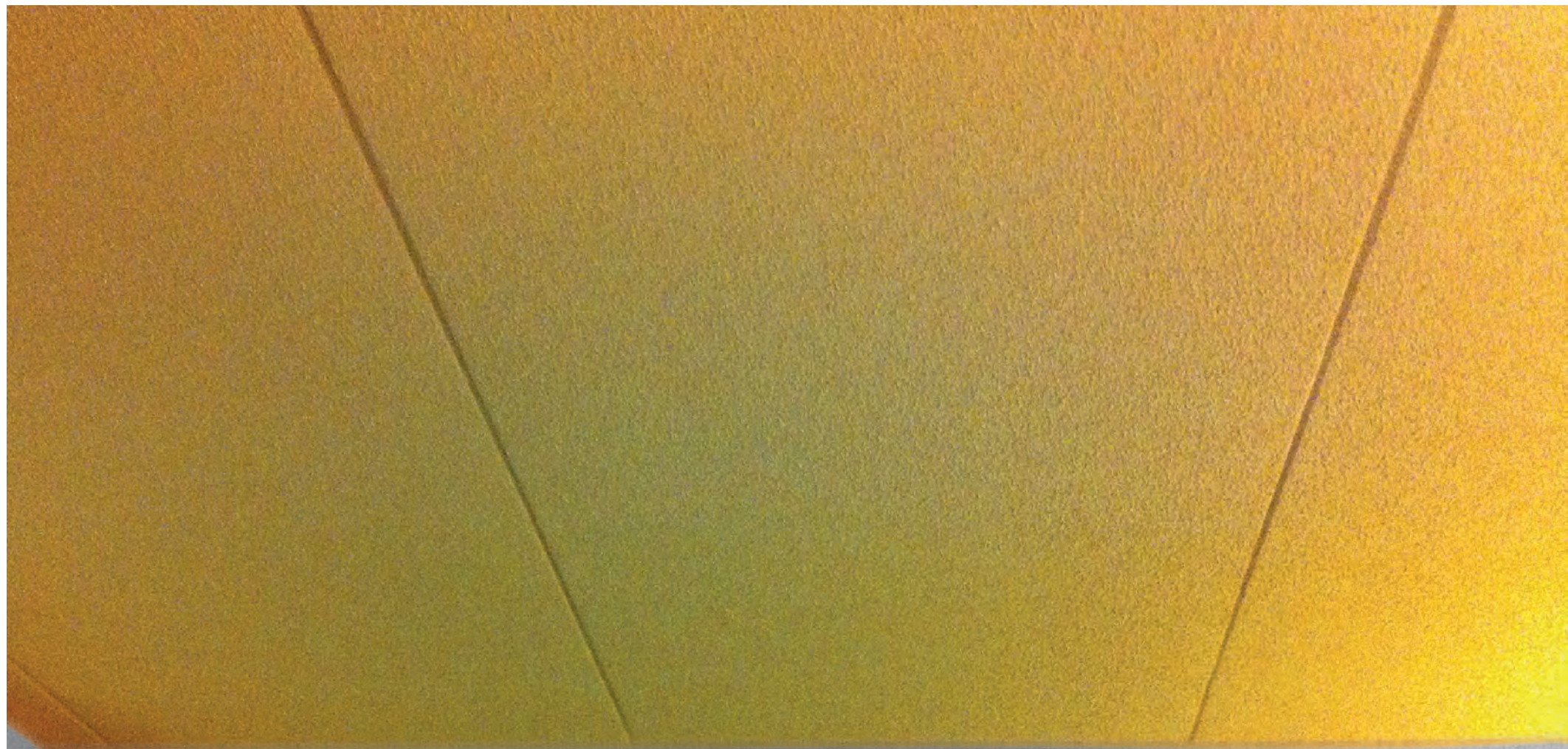
CONSTRUCTION PROCESS

CONCRETE
Poured concrete



FINAL DETAILS

OFFICES



FINAL DETAILS



FINAL DETAILS

LANDMARK

FINAL DETAILS

AMERICAS 1254

CONSTRUCTION PROCESS

Brew
In process

Polystyrene

Assembling
reinforcement

Pre-slabs
Ready for
download
In process

Preslabs
Placed

Pump
concrete



PRESLABS

Carlos Mérida No. 53, Lomas del Colli,
C.P. 45010, Zapopan, Jalisco, México.

Tel. +52 33 3110 1313

www.anteus.mx

