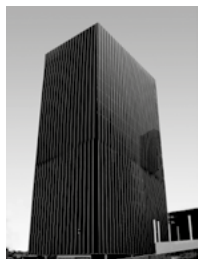
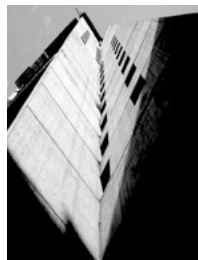


CONTENT



ANTEUS CONSTRUCTORA 3

SUPPORT SERVICES 4

CONSTRUCTION SERVICES 7

POST - TENSIONING 8

METALLIC STRUCTURE 9

PREFABRICATED WALLS 11

PRESLABS 12

STEEL ASSEMBLING FACILITIES 14

CRANES & SITE ELEVATORS 15

TURNKEY PROJECTS 18

CONSTRUCTION IN PROGRESS 25

COMMERCIAL CONSTRUCTION 41

HOUSING CONSTRUCTION 60

INDUSTRIAL CONSTRUCTION 94

ANTEUS CONSTRUCTORA

ANTEUS CONSTRUCTORA IS A CONSTRUCTION AND CIVIL ENGINEERING COMPANY CAPABLE OF PROVIDING ALL SERVICE AND FUNCTIONS REQUIRED TO CARRY OUT CONSTRUCTION, ADAPTATION OR REMODELING PROJECTS UNDER THE BEST TERMS OF EFFICIENCY AND COST.

SINCE 1996, OUR EXPERIENCE AND SKILLS ENABLE US TO PERFORM DIRECTLY MOST OF OUR WORK, ALTHOUGH WE CAN SUBCONTRACT SPECIFIC JOBS IN CERTAIN CASES BASED ON OUR EFFORTS TO SEARCH FOR THE MOST CONVENIENT AND COST-EFFECTIVE FORMULA FOR EACH PROJECT.

AS A COMPANY, WE HANDLE TURNKEY PROJECTS FOR ANY TYPE OF CONSTRUCTION (HOUSING, COMMERCIAL OR INDUSTRIAL). THIS ALLOWS US A GREATER OPTIMIZATION IN THE EXECUTION TIMES AS WELL AS IN THE QUALITY OF WORK.



BIM

DEVELOPING THE PROJECT THROUGH THIS METHODOLOGY HELPS TO PREVENT PROBLEMS BETWEEN SPECIALTIES DURING THE DIFFERENT STAGES OF THE PROJECT: PRECONSTRUCTION, CONSTRUCTION AND EVEN POSTCONSTRUCTION, MAKING THE PROCESSES MORE EFFICIENT.

PROCORE

FOR THE PLANNING AND MANAGEMENT OF EACH PROJECT, WE RELY ON THE USE OF THIS PLATFORM, OPTIMIZING TIME AND WORK EXECUTION.

PLANNING

CREATION AND IMPLEMENTATION OF PROJECT LEADING AND MANAGEMENT STRATEGIES, BASED ON OBJECTIVES, LOOKING FOR THE MOST EFFICIENT AND COST-EFFECTIVE FORMULAS. TURNKEY PROJECT MANAGEMENT, WHICH ALLOWS US TO BETTER OPTIMIZE EXECUTION TIMES AS WELL AS QUALITY OF WORK.

SCHEDULING

CALCULATION, PREPARATION, AND GRAPHIC REPRESENTATION OF EXECUTION TIMES; ESTABLISHMENT OF DATES FROM THE BEGINNING TO THE END OF THE ACTIVITIES THAT MAKE UP THE PROCESSES.

QUALITY CONTROL

SUPERVISING THAT MATERIALS AND EXECUTION MEET THE CONSTRUCTION REQUIREMENTS REGARDING RESISTANCE AND APPEARANCE.

SAFETY

WE ESTABLISH THE POLICIES AND PROCEDURES TO GUARANTEE THE SAFETY OF THE CONSTRUCTION PERSONNEL AND SUBCONTRACTORS.



DELFINARIO. CABO SAN LUCAS, B.C.S.



CORPORATE ANDARES. ZAPOPAN, JALISCO.

SUPPORT SERVICES

BUDGETING AND PURCHASING

QUOTATION OF DIFFERENT PROJECTS IN ORDER TO ASSESS THE BEST OPTION BASED ON COST AND EXECUTIO TIME.

ALSO, AN ANALYSIS OF UNIT PRICES AND CONSTRUCTION ESTIMATES IS PERFORMED DURING THE CONSTRUCTION PROCESS CONSIDERING THE INFLATIONAY INDEXES.

CONTROL AND WORK REPORTS

WE SUBMIT THE MEANS TO DETERMINE CONCORDANCE BETWEEN REAL AND PLANNED COSTS, SCHEDULING, AND ACHIEVEMENT OF THE ESTABLISHED GOALS. WE LINK TIME AND COSTS IN ORDER TO EXECUTE WORK BASED ON ITS ESTABLISHED SCHEDULE.

SAFETY

WE ESTABLISH THE POLICIES AND PROCEDURES TO GUARANTEE THE SAFETY OF THE CONSTRUCTION PERSONNEL AND SUBCONTRACTORS.

SUBCONTRACTOR SUPERVISION

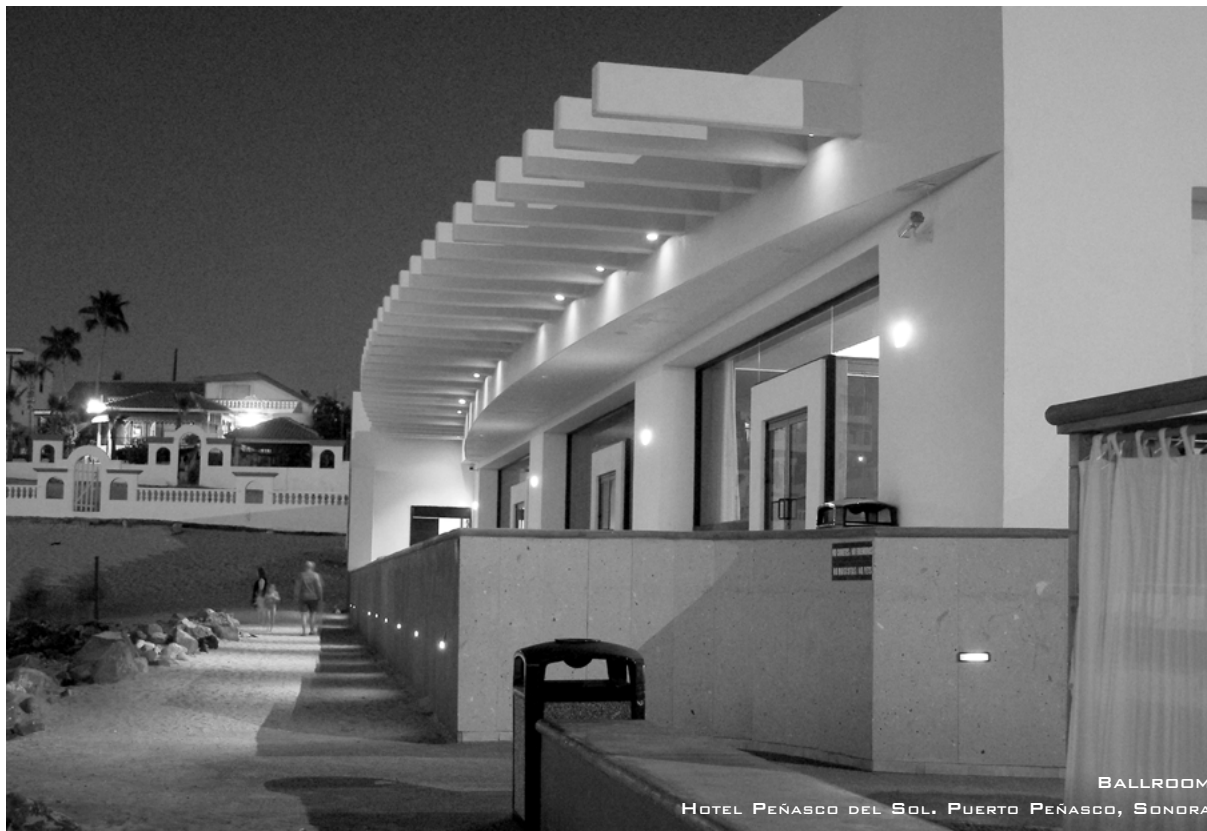
THE WORK PLAN INCLUDES A GROUP OF SPECIALISTS IN CHARGE OF SUBCONTRACTOR MANAGEMENT AND CONSTRUCTION MANAGEMENT.

ADQUISITION AND SHIPMENT OF EQUIPMENT

WE SUPPLY SPECIAL EQUIPMENT AND SYSTEMS FOR ELECTRICAL AND MECHANICAL WORK. WE PROVIDE ENGINEERING CONSULTANCY SEARCHING FOR THE APPROPRIATE FOR THEIR REQUIREMENT.

CHECK UP STARTING

WE MADE A STRICT SPECIFICATIONS CONTROL OF WORK ESTABLISHED IN THE ORIGINAL PLAN OF CONSTRUCTION, DOING THE VERIFICATION OF THE OPERATIONS OF ALLA THE SYSTEMS UNDER OUR RESPONSABILITY.



HIDROSANITARY

AIR CONDITIONING AND VENTILATION

SOFFIT

HIGH AND LOW VOLTAGE ELECTRICAL INSTALLATIONS

PLUMBING

FIRE PROTECTION SYSTEMS

TILING, CERAMIC, MARBLE AND PLASTIC WORK

GARDENING

SOIL MECHANICS

DIRT MOVING

FOUNDATIONS

PILOTAGE

STRUCTURAL CONCRETE

STEEL STRUCTURES

MASONRY

GENERAL MASONRY

FLOORS

CONCRETE PAVEMENT

ASPHALT PAVEMENT

CONSTRUCTION SERVICES

FOR CERTAIN SPECIFIC JOBS, WE USE
THE SERVICES OF SUBCONTRACTORS,
COORDINATED AND SUPERVISED AT ALL
TIMES FOR ANTEUS CONSTRUCTORA.

GLASS
ALUMINIUM
CARPENTRY
ISOLATION
HEATING
COOLING TOWERS
ENDED ARCHITECTURAL



POST - TENSIONING

POST-TENSIONING IS A METHOD OF PRESTRESSING IN WHICH PRESTRESSING STEEL IS TENSIONED AFTER CONCRETE HAS HARDENED.

PRE-STRESS IS THE PLACEMENT OF A CONCRETE ELEMENT IN A STATE OF COMPRESSION PRIOR TO THE APPLICATION OF LOADS; THE STRESS DEVELOPED BY THE PRE-STRESS CAN BE PRETENSIONING OR POST-TENSIONING.

PRESTRESSED CONCRETE IS STRUCTURAL CONCRETE IN WHICH INTERNAL STRESSES HAVE BEEN INTRODUCED TO REDUCE POTENTIAL TENSILE STRESSES IN CONCRETE RESULTING FROM LOADS WHICH ARE COUNTERACTED TO A DESIRED DEGREE; IN REINFORCED CONCRETE THE PRESTRESS IS COMMONLY INTRODUCED BY TENSIONING THE TENDONS.

ITS VERSATILITY ALLOWS A WIDE VARIETY OF USES IN CONSTRUCTION: OFFICE BUILDINGS, HOUSING, SHOPPING CENTERS, INDUSTRIAL FLOORS.

THIS METHOD PRODUCES MORE SLENDER STRUCTURAL ELEMENTS, LESS REINFORCING STEEL, LIGHTER ELEMENTS WITH GREATER LOAD CAPACITY, MORE CLEAR OR SPACES BETWEEN THE SUPPORT ELEMENTS.



INDUSTRIAL WAREHOUSE FLOOR ECOPARK, ZAPOPAN, JALISCO.



TORRE CUBE, ZAPOPAN, JALISCO.

INDUSTRIAL
FACILITIES

COMMERCIAL BUILDINGS

MANUFACTURING
INDUSTRIES

METALLIC STRUCTURE

THE STRATEGIC VISION IN THE CONSTRUCTION INDUSTRY HAS RESULTED IN THE FACT THAT PROVED CONSTRUCTION SYSTEMS AND COMPETITIVE COMPANIES THAT OFFER QUALITY SERVICES AND PRODUCTS ARE THE COMMON REQUIREMENT OF CUSTOMERS LIKE YOURSELF.

WE ARE COGNIZANT OF THE FACT THAT THE RETURN ON YOUR CAPITAL INVESTMENTS IN REAL ESTATE PROPERTY TO PERFORM YOUR PRODUCTIVE ACTIVITIES, SUCH AS INDUSTRIAL WAREHOUSE, INBOND FACILITIES OR SHOPPING CENTERS GOES HAND-IN-HAND WITH THE CONSTRUCTION TIMES AND WITH FAST RESPONSE TO YOUR REQUIREMENTS.

IN THESE SENSE, IT IS CLEAR THAT WORKING CLOSELY WITH THE COMPANIES WHICH ARE AT YOUR SERVICE AND THE SUM OF THEIR STRENGTHS MAKES THE PROCESS OF BUILDING THESE SPACES PROFITABLE AND PRODUCTIVE.

AT ANTEUS CONSTRUCTORA WE ARE COMMITED WITH YOU TO ACHIEVE THIS OBJECTIVE. FOR THIS REASON, WE OFFER ALL OUR PRODUCTS AND SERVICES, OUR CAPACITY AND TECHNOLOGY TO GUARANTEE THE SUCESS OF YOUR VERY IMPORTANT INVESTMENTS.



PREFABRICATED WALLS

HIGH FIRE RESISTANCE

WITH THE SIMPLE MANUFACTURING PROCESS AND WITHOUT SPECIAL COATING, OUR WALLS CAN WITHSTAND UP TO 2 HOURS OF DIRECT EXPOSURE TO FIRE WITHOUT UNDERGOING ANY DAMAGE, THUS PROTECTING THE OWNER'S INVESTMENT AND REDUCING THE ANNUAL INSURANCE PREMIUM.

REDUCTION IN CONSTRUCTION TIME

SINCE WE CAN PREFABRICATE ALL OF THE ELEMENTS SIMULTANEOUSLY WITH THE EXCAVATION, SOIL MOVEMENT, AND FOUNDATION WORK, THE CONSTRUCTION SCHEDULE CAN BE REDUCED UP TO 40% COMPARED TO OTHER SYSTEMS.

LOWER COST

THROUGH MASS PRODUCTION, ALL OF THESE QUALITIES RESULT IN VERY COMPETITIVE COSTS THAT ARE EVEN LOWER COSTS THAN THOSE OBTAINED WITH SIMILAR SYSTEMS.

USING PRESTRESSED WALLS (TILT-UP) IN YOUR PROJECT FOR FACADES, OFFERS GREAT VERSATILITY, SINCE THE STRUCTURE AND THE FINISH ARE CONTAINED IN THE SAME ELEMENT.

TILT UP WALLS

THE TILT-UP WALLS ARE EXTRUDED CONCRETE ELEMENTS OF $f'c = 250 \text{ Kg/cm}^2$, MANUFACTURED IN OUR PLANT OR AT SITE; THE PRESTRESSED IS INDUCED THROUGH STRAND CABLES WHICH ARE PLACED VERTICALLY.





APPLICATIONS

PRESLABS CAN BE USED AS A ROOF AND AS A SLAB SUPPORTED BY ANY KIND OF STRUCTURE (CONCRETE, STEEL, BEARING WALL, ETC.)



IS A SYSTEM WHICH CONSISTS IN A PRESTRESSED CONCRETE THAT SLAB FABRICATION OUTSIDE THE CONSTRUCTION SITE WITH A BIGGER LOAD CAPACITY AND COVERING LARGER SPACES. THE SLAB FABRICATION IS COMPLETELY AUTOMATED AND MADE OVER STEEL SURFACES. THE CONCRETE HAS A RESISTANCE OF 4,267 OR 4,978 OR 5,689 PSI

TENDONS (HAVE DIFFERENT SIZES DEPENDING ON CALCULATIONS) ARE HIGH STRENGTH STABILIZED WITHOUT CURVATURE.

THEY HAVE UNIFORM STRESS-STRAIN CHARACTERISTICS.

PRESLABS HAVE SMOOTH UNDERSIDE, PREPARED FOR PAINTING.

STANDARD WIDTHS ARE, **3.94FT** (1.2 M) AND **7.87FT** (2.4M).

LENGTH IS VARIABLE.

SHORING NEEDED EVERY **7.22FT** FOR A PRESLAB OF 2.36 IN **12.47FT** FOR A PRESLAB OF 4 IN AND **16.4FT** FOR A PRESLAB OF 5.9 IN.



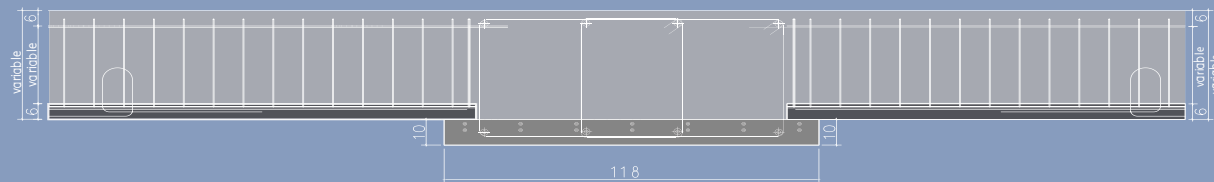
CIVIL WORKS PARKING LOTS HOTELS HOSPITALS
INDUSTRIAL FACILITIES SCHOOLS & COLLEGES
TUNNELS GENERAL CONSTRUCTION

PRESLAB BEAM

IS A SYSTEM WITH A BIGGER LOADER CAPACITY AND LESS DEPTH THAN A NORMAL GIRDER. SYSTEM THAT HAS THE SAME ADVANTAGES OF PRESLAB.



DETAIL OF UNION BY PRESLAB-BEAM



MACHINERY

(HABILITADOS AND CUTTERS)



BAR WISER 28 IT IS A HIGHLY POWERFUL STRAIGHTENING AND BENDING MACHINE WITH TWO BENDING HEADS DESIGNED FOR PROCESSING REBAR, WITH A PROCESSING CAPACITY OF UP TO \varnothing 28 MM, OR DOUBLE \varnothing 20 MM, OR TRIPLE \varnothing 12 MM.

MINI SYNTAX 16 HS IT IS USED FOR THE PRODUCTION OF BRACKETS, LARGE-DIMENSION PROFILES, AND BARS CUT TO SIZE USING ONE OR TWO ANGLE IRONS.

COIL 16 IT ALLOWS TO PRODUCE STRAIGHT CUT, STRAIGHT CUT WITH ONE OR TWO SQUARES, STIRRUP, STAPLE, SADDLES.

CHV-160 CUTTING MACHINE AND P-60 BENDING MACHINE THE COMPANY HAS A CHV-160 CUTTING MACHINE FOR THE CUTTING PROCESS, WHICH CUTS THE MATERIAL TO THE PROGRAMMED DIMENSIONS, AS WELL AS A MANUAL P-60 BENDING MACHINE USED TO SHAPE STEEL FOR BEAMS AND COLUMNS.

OTHER SERVICES PROVIDED BY ANTEUS CONSTRUCTORA INCLUDE: LIFTING EQUIPMENT, CONCRETE PUMPS, AND EXCAVATORS.



PRIMA 13 SPREADER.

PRIMA 16 SPREADER.

SKZ THREADING LINE.

2 HANKAR INDUSTRIAL 5 TON SINGLE DECK CRANES.



CRANES & SITE ELEVATORS

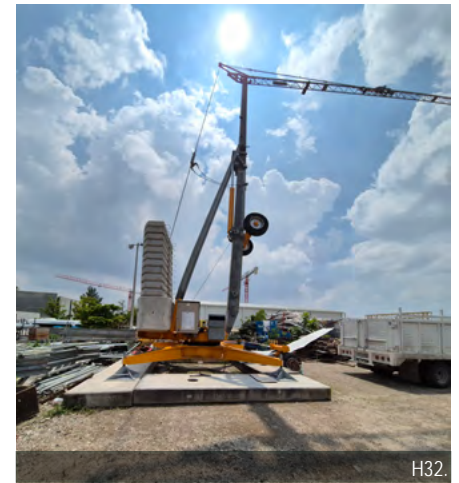
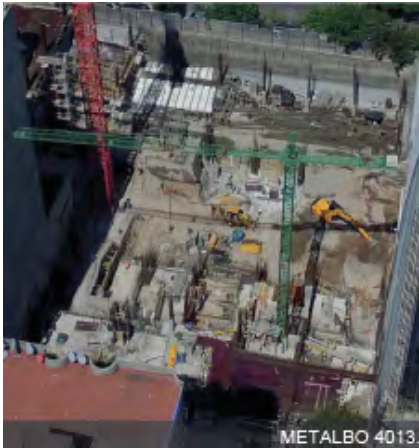


AVAILABILITY IN THE INCOMING CRANES

CRANES	ABILITY
1 S-46	2.5 tons.
4 SAEZ S52	4 tons.
2 SAEZ 55TL	5 tons.
1 SAEZ TL505	5 tons.
2 S65	6 tons.
2 S65	8 tons.
3 TLS65	8 tons.
2 TLS65	10 tons.
4 SLH 110	6 tons.
1 SLH 190	8 tons.
1 PERGRUA	2 tons.
1 METALBO 4013	2.5 tons.
1 METALBO 5010	2.5 tons.
1 METALBO 3010	2 tons.
1 J-5010	2.5 tons.
1 JASO 52NS	2.5 tons.
2 JASO 47NS	2.5 tons.
1 JASO 5010	2.5 tons.
1 JASO - DERRICK	4 tons.
1 TEREX - DERRICK	12 tons.
4 H32	4 tons.



CRANES & SITE ELEVATORS



CRANES & SITE ELEVATORS



DESCRIPTION:

THESE ARE THE PROJECTS WHERE OUR WORK AS A GENERAL CONTRACTOR OFFERS AN ADVANTAGE TO OUR CLIENTS BY DEALING WITH ONE COMPANY DIRECTLY, AS WE_ ARE IN CHARGE OF ALL ACTIVITIES.

HERE ARE SOME EXAMPLES OF OUTSTANDING WORKS:

- LEGACY TOWER.
- OPERA (IN PROGRESS).
- CHAPULTEPEC 427 (IN PROGRESS).
- NAUKA LOT 3 & 32 (IN PROGRESS).
- TORRE DEL PRADO.
- DISTRITO CUBE.



TURNKEY PROJECTS



OPERA

"IN PROGRESS".

CONCRETE STRUCTURE.

8 PARKING LEVELS: 194007.53 FT².

35 TOWER LEVELS: 321630.8 FT².

HEIGHT: 423.65 FT.

LOCATION: ZAPOPAN, JALISCO.





CHAPULTEPEC 427

"IN PROGRESS"

CONCRETE STRUCTURE.

5 PARKING LEVELS: 167950.58 FT².

33 TOWER LEVELS: 332276.41 FT².

HEIGHT: 386.48 FT.

LOCATION: GUADALAJARA, JALISCO.

TURNKEY PROJECTS



NAUKA LOT 3

"IN PROGRESS".

RETAINING WALL, STAIRS, WALKWAYS, FIRST FLOOR AND SECOND FLOOR.

CONSTRUCTION AREA: MAIN HOUSE & ADDITIONAL HOUSE: 15672.25 FT².

HEIGHT: 27.55 FT.

LOCATION: NAYARIT, MEXICO.



NAUKA LOT 12

OBJECT, DESIGNED TO BLEND IN WITH ITS SURROUNDINGS ON THE COAST OF NAYARIT.

LAND SURFACE: 61,139.01 FT².

TOTAL CONSTRUCTION SURFACE: 20,989.63 .

DISTRIBUTED OVER TWO LEVELS.

LOCATION: COMPOSTELA, NAYARIT.

TURNKEY PROJECTS



NAUKA LOT 32

"IN PROGRESS".

RESIDENCES.

BASEMENT, FIRST FLOOR AND SECOND FLOOR.

TOTAL CONSTRUCTION AREA: 15986.23 FT².

HEIGHT: 27.55 FT.

LOCATION: NAYARIT, MEXICO.



NAUKA LOT 33

"IN PROCESS".

CONCRETE STRUCTURE.

BASEMENT: 8,481.74 FT².

FIRST FLOOR: 6,232.62 FT².

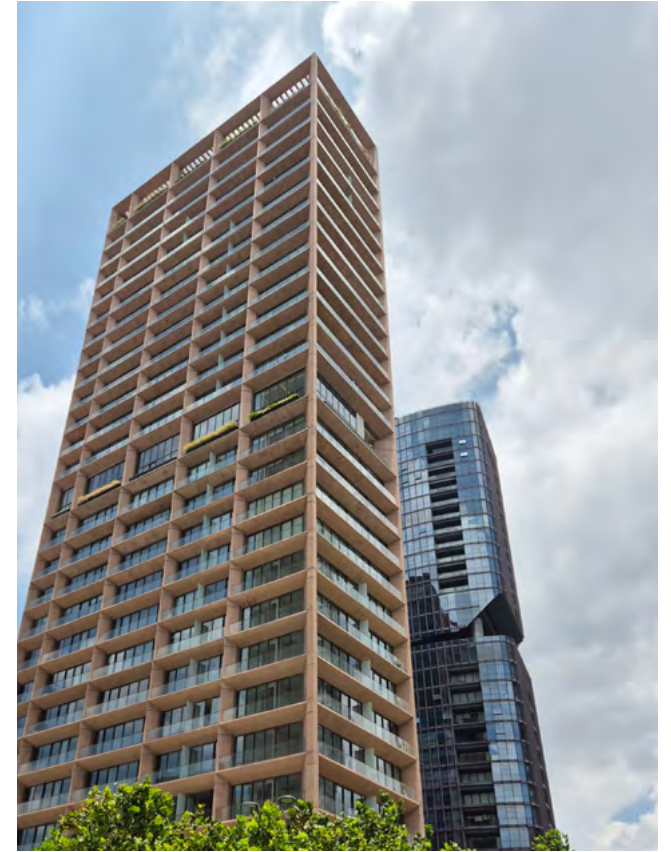
SECOND FLOOR: 6014.87 FT².

TOTAL CONSTRUCTION SURFACE:

20,729.24 FT².

LOCATION: NAYARIT, MÉXICO.

TURNKEY PROJECTS



LEGACY TOWER

6 BASEMENT LEVELS: 251,913.12 FT².

27 TOWER LEVELS: 454,954.32 FT².

HEIGHT: 416.83 FT.

LOCATION: ZAPOPAN, JALISCO.

PROYECTO: SMA.

TURNKEY PROJECTS



TORRE DEL PRADO

7 PARKING LEVELS: 97,103.82 FT².
18 TOWER LEVELS: 147,729.61 FT².
HEIGHT: 201.77 FT.
LOCATION: ZAPOPAN, JALISCO.
OWNER: C&C CAPITAL.



DISTRITO CUBE

3 BUILDINGS.
3 BASEMENT LEVELS: 126,236.32 FT².
5 STOREYS E/BUILDING: 146,906.28 FT².
TOWER A HEIGHT: 61.02 FT.
TOWER B HEIGHT: 66.11 FT.
TOWER C HEIGHT: 48.56 FT.
LOCATION: ZAPOPAN, JALISCO.
OWNER: CUBE RESIDENCIAL S.A. DE C.V.

CONSTRUCTION IN PROGRESS



CONSTRUCTION IN PROGRESS



LEGEND

"IN PROGRESS".
CONCRETE STRUCTURE.
52 TOWER LEVELS: 667,362.45 FT².
9 BASEMENT LEVELS.
HEIGHT: 623.36 FT.
LOCATION: ZAPOPAN, JALISCO.

CONSTRUCTION IN PROGRESS



CHAPULTEPEC 427

"IN PROGRESS"

CONCRETE STRUCTURE.

5 PARKING LEVELS: 167,950.58 FT².

33 TOWER LEVELS: 332,276.41 FT².

HEIGHT: 386.48 FT.

LOCATION: GUADALAJARA, JALISCO.



NAUKA RITZ CARLTON RESERVE

CONCRETE STRUCTURE.
MAIN BUILDING.
26 VILLAS.
6 1/2 BRANDED RESIDENCES.
BEACH CLUB.
SPA.
ADULT POOL.
LOCATION: COMPOSTELA, NAYARIT.
OWNER: GFA / THOR URBANA.



CONSTRUCTION IN PROGRESS



NAUKA - MARINA BEACH CLUB

CONCRETE STRUCTURE.
POOL.
SEA VIEW.
LOCATION: COMPOSTELA, NAYARIT.





NAUKA: LOT 12

PHASE 1:

LUXURY PROJECT, DESIGNED TO BLEND IN WITH ITS
SURROUNDINGS ON THE COAST OF NAYARIT.

LAND SURFACE: 61,139.01 FT².

TOTAL CONSTRUCTION SURFACE: 20,989.63 .

DISTRIBUTED OVER TWO LEVELS.

LOCATION: COMPOSTELA, NAYARIT.

CONSTRUCTION IN PROGRESS



METROPOLI AREA

CONCRETE STRUCTURE.

25 TOWER LEVELS: 31,0014.07 Ft².

3 BASEMENT LEVELS: 281.49 Ft².

HEIGHT: 229.69 Ft.

LOCATION: AV. IGNACIO L. VALLARTA 5888, JOCOTAN,
45017 ZAPOPAN, JAL.



ESPACIO MARINA Y GOLF

CONCRETE STRUCTURE.

TWO TOWERS.

11 TOWER LEVELS.

TOTAL AREA: 283,442.39 Ft².

LOCATION: AVENIDA PASEO DE LA MARINA,
PUERTO VALLARTA, JALISCO
OWNER: DALTON INMOBILIARIA.



ENTORNO MEXICO

CONCRETE STRUCTURE.
6 BASEMENT LEVELS: 433,227.08 FT².
25 TOWER LEVELS: 463,807.97 FT².
HELIPORT.
HEIGHT: 341.978 FT.
LOCATION: GUADALAJARA, JALISCO.
OWNER: ROCHER HOLDINGS.



NERUDA PROVIDENCIA - AMERICAS

CONCRETE STRUCTURE.
8 BASEMENT LEVELS: 358,107.86 FT².
24 TOWER LEVELS: 403,022.69 FT².
HELIPORT.
HEIGHT: 309.08 FT.
LOCATION: GUADALAJARA, JALISCO.
OWNER: ROCHER HOLDINGS.



ESSENTIA COUNTRY

CONCRETE STRUCTURE.
4 BASEMENT LEVELS.
24 TOWER LEVELS: 161,205.67 FT².
HEIGHT: 321.42 FT.
LOCATION: GUADALAJARA, JAL.

CONSTRUCTION IN PROGRESS



LANDMARK TIJUANA

3 BASEMENT LEVELS: 17,450.42 FT².

32 TOWER LEVELS: 115,662.86 FT².

TOTAL AREA CONSTRUCTION: 133,113.28 FT².

**LOCATION: BLVD. AGUA CALIENTE 10223, CALETE,
22044 TIJUANA B.C.**

OWNER: GFA GRUPO INMOBILIARIO.



COSMOPOLITAN BY THE SEA

CONCRETE STRUCTURE.

**AMENIDADES: POOL, SPA, GYM,
RESTAURANT, BOARDROOM.**

26 TOWER LEVELS.

**• LOCATION: ENSENADA, BAJA CALIFORNIA.
CONSTRUCTION IN PROGRESS**



AMANGAY

CONCRETE STRUCTURE.
1 BASEMENT: 18,306.10 FT².
11 TOWER LEVELS: 164,642.10 FT².
HEIGHT: 126.64 FT.
LOCATION: NUEVO VALLARTA, NAYARIT.
OWNER: PENINSULA.



THE DISTRICT

CONCRETE STRUCTURE.
7 BASEMENT LEVELS: 171,643.52 FT².
31 TOWER LEVELS: 254,258.80 FT².
HEIGHT: 432.545 FT.
LOCATION: GUADALAJARA, JALISCO.
OWNER: SMA.

CONSTRUCTION IN PROGRESS



AZUR

CONCRETE STRUCTURE.

1 BASEMENT.

17 TOWER LEVELS.

HEIGHT: 195.70 FT.

LOCATION: ACAPULCO DE JUAREZ, GUERRERO.

OWNER: PENINSULA.



RINCONADA PARKING

"IN PROGRESS"

STRUCTURE BY: STEEL & CONCRETE.

CONCRETE OF WALLS.

AREA: 33,088.79 FT².

HEIGHT: 46.91 FT.

LOCATION: FRACCIONAMIENTO RINCONADA, GUADALAJARA JALISCO.



OCEAN ONE

CONCRETE STRUCTURE.
2 BASEMENT LEVELS: 125,110.50 FT².
25 TOWER LEVELS: 364,959.94 FT².
HEIGHT: 282.97 FT.
LOCATION: ACAPULCO DE JUAREZ, GUERRERO.



DITELLA

1 BASEMENT LEVELS: 49,758.33 FT².
12 TOWER LEVELS: 20,5115.67 FT².
HEIGHT: 145.01 FT.
LOCATION: ACAPULCO DE JUAREZ, GUERRERO
OWNER: PENINSULA.

CONSTRUCTION IN PROGRESS



VIANO RESIDENCES

CONCRETE STRUCTURE.

4 BASEMENT: 51,903.57 FT²

42 TOWER LEVEL: 154,203.77 FT²

HEIGHT: 516.863 FT.

LOCATION: GUADALAJARA, JALISCO.

OWNER: PENINSULA.

PROJECT:

SORDO MADALENO ARQUITECTOS.



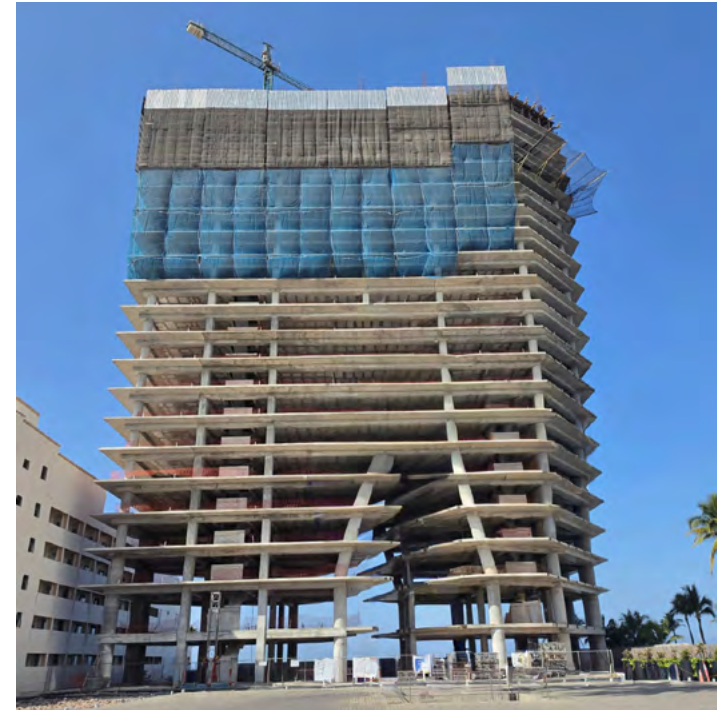
MAROA DIAMANTE

5 BUILDING STOREYS.

CONSTRUCTION AREA: 38,158.062 FT².

LOCATION: COSTERA DE LAS PALMAS MANZANA,
ACAPULCO DE JUAREZ, GRO.

OWNER: PENINSULA.



MAZATLAN TOWER 200

BASEMENT (1): 61,935.541 FT².

TOWER LEVELS (31): 370,924.35 FT².

LOCATION: MAZATLAN, SINALOA 82112, MEXICO.

OWNER: PENINSULA.

CONSTRUCTION IN PROGRESS



URBANIA 300

CONCRETE STRUCTURE.
2 BASEMENT LEVELS: 10,404.92 FT².
19 TOWER LEVELS: 215,350.64 FT².
HEIGHT: 229.69 FT.
LOCATION: ZAPOPAN, JALISCO.
OWNER: PENINSULA.



ALAMEDAS WAREHOUSE

STEEL STRUCTURE.
SHIP 1 Y 2 - 59,478.57 FT².
INDOOR OFFICE: 2,012.85 FT².
LOCATION : ANTIGUO CAMINO AL SALTO 205 Y 208, TLAJOMULCO DE ZUÑIGA.



COMMERCIAL CONSTRUCTION



AMERICAS MIL

CONCRETE STRUCTURE.

7 BASEMENT LEVELS: 307,736.00 FT².

28 TOWER LEVELS: 625,446.52 FT².

HEIGHT: 401.74 FT.

LOCATION: GUADALAJARA, JALISCO.

OWNER: INMOBILIARIA 1500 S.A. DE C.V.

PROJECT: SORDO MADALENO.



AMERICAS 500

CONCRETE STRUCTURE.

7 BASEMENT LEVELS: 513,617.84 FT².

29 TOWER LEVELS: 650,033.12 FT².

HEIGHT: 435.04 FT.

LOCATION: GUADALAJARA, JALISCO.

PROJECT: SMA.



BANSI CORPORATE

CONCRETE STRUCTURE.

7 BASEMENT LEVELS: 305,444.12 FT².

32 TOWER LEVELS: 310,178.52 FT².

HEIGHT: 532.48 FT.

LOCATION: GUADALAJARA, JALISCO.

OWNER: BANSI.

COMMERCIAL CONSTRUCTION



LANDMARK

CONCRETE STRUCTURE.

6 BASEMENT LEVELS: 961,685.76 FT².

4 STOREYS COMMERCIAL AREA: 369,971.84 FT².

19 STOREYS OFFICES TOWER: 284,193.12 FT².

32 STOREYS HOUSING TOWER: 395,526.84 FT².

HOUSING TOWER HEIGHT: 493.77 FT.

OFFICES TOWER HEIGHT: 339.57 FT.

LOCATION: ZAPOPAN, JALISCO.

OWNER: GFA.



ANDARES III HYATT

CONCRETE STRUCTURE.

4 BASEMENT LEVELS: 75,039,370.1 FT².

42 TOWER LEVELS: 1,326,751.04 FT².

HEIGHT: 606.96 FT.

LOCATION: ZAPOPAN, JALISCO.

OWNER: D.M.I.

PROJECT: SMA.

COMMERCIAL CONSTRUCTION



TORRE CUBE

OFFICES BUILDING.

4 BASEMENT LEVELS: 75,320.00 FT².

HEIGHT: 176.67 FT.

16 TOWER LEVELS: 107,600.00 FT².

LOCATION: ZAPOPAN, JALISCO.

OWNER: CUBE INTERNACIONAL.

PROJECT: CARME PINOS.



TORRE CUBE 2

CONCRETE STRUCTURE.

LOCATION: ZAPOPAN, JALISCO.

7 PARKING BASEMENT: 202,230 FT².

28 TOWER LEVELS: 163,769 FT².

HEIGHT: 408.46 FT.

OWNER: CUBE RESIDENCIAL S.A. DE C.V.

PROJECT: CARME PINOS.

COMMERCIAL CONSTRUCTION



CORPORATE CENTRAL PARK GDL.

CONCRETE STRUCTURE.
7 BASEMENT LEVELS: 307,929.68 FT².
29 TOWER LEVELS: 341,382.52 FT².
HEIGHT: 418.31 FT.
LOCATION: GUADALAJARA, JALISCO.
OWNER: PENINSULA.



HELIX TOWER

CONCRETE STRUCTURE.
7 BASEMENT LEVELS: 117,875.80 FT².
18 TOWER LEVELS: 160,689.84 FT².
HEIGHT: 257.22 FT.
LOCATION: GUADALAJARA, JALISCO.



WESTIN HOTEL

CONCRETE STRUCTURE.
3 BASEMENT LEVELS: 59,782 FT².
20 TOWER LEVELS: 185,158 FT².
HEIGHT: 311.35 FT.
LOCATION: GUADALAJARA, JALISCO.
OWNER: GRUPO INMOBILIARIO ALHEL.

COMMERCIAL CONSTRUCTION



PABELLON -HOTEL- RESIDENCES

CONCRETE STRUCTURE.
22 TOWER LEVELS: 220,418.60 FT².
HEIGHT: 297.54 FT.
LOCATION: GUADALAJARA, JALISCO.
OWNER: CITICAPITAL.



HOTEL ALOFT (NOW HOTSSON)

CONCRETE STRUCTURE.
5 BASEMENT LEVELS: 52,950 FT².
23 TOWER LEVELS: 93,397 FT².
HEIGHT: 282.15 FT.
LOCATION: GUADALAJARA, JALISCO.
OWNER: INMO F, S.A. DE C.V.
PROJECT: KMD ARCHITECTS.



CORPORATE COUNTRY

OFFICES BUILDING.
8 BASEMENT LEVELS: 219,947.63 FT².
17 TOWER LEVELS: 248,059.64 FT².
HEIGHT: 277.88 FT.
LOCATION: GUADALAJARA, JALISCO.
OWNER: C&C CAPITAL.

COMMERCIAL CONSTRUCTION



CORPORATE ANDARES I

OFFICES BUILDING.

4 BASEMENT LEVELS: 167,963.60 FT².

9 TOWER LEVELS: 161,227.84 FT².

HEIGHT: 156.17 FT.

LOCATION: ZAPOPAN, JALISCO.

OWNER: D.M.I.

PROJECT: SMA.



VISTA ACUEDUCTO

CONCRETE STRUCTURE WITH PRESLABS.

4 BASEMENT LEVELS: 198,479 FT².

14 TOWER LEVELS: 252,386 FT².

HEIGHT: 224.74 FT.

LOCATION: GUADALAJARA, JALISCO.

OWNER: ROCHER HOLDINGS.



ITESM - CDMX

CONCRETE STRUCTURE.

LIBRARY, PROFESSIONAL & HIGH SCHOOL.

5 STOREYS LIBRARY TOWER:

118,090.78 FT².

LIBRARY HEIGHT: 85.30 FT.

6 STOREYS PROFESSIONAL TOWER:

223,797.35 FT².

PROFESSIONAL TOWER HEIGHT: 86.94 FT.

6 STOREYS HIGH SCHOOL TOWER:

187,462.01 FT².

HIGH SCHOOL HEIGHT: 80.38 FT.

LOCATION: TLALPAN, CDMX.

COMMERCIAL CONSTRUCTION



CORPORATE ACUEDUCTO

OFFICES BUILDING.
4 BASEMENT LEVELS: 219,245 FT².
16 TOWER LEVELS: 220,580 FT².
HEIGHT: 291.67 FT.
LOCATION: ZAPOPAN, JALISCO.
OWNER: D.M.I.
ARCHITECT: HOK.



LEBEN

CONCRETE STRUCTURE.
3 BASEMENT LEVELS: 37,767.60 FT².
6 TOWER LEVELS: 48,796.60 FT².
HEIGHT: 98.72 FT.
LOCATION: GUADALAJARA, JALISCO.
OWNER: KIVA GRUPO INMOBILIARIO.



**PABLO NERUDA 2656
(FRATER)**

CONCRETE STRUCTURE.
5 STOREYS BASEMENTE PARKING LOT: 56,403.92 FT².
12 TOWER LEVELS: 120,243.11 FT².
HEIGHT: 168.14 FT.
LOCATION: GUADALAJARA, JALISCO.
PROJECT: ELIAS RIZO ARQUITECT.

COMMERCIAL CONSTRUCTION



ANDARES MALL

CONCRETE STRUCTURE.
BASEMENT SURFACE: 1,350,929 FT².
MALL SURFACE: 538,000 FT².
LOCATION: ZAPOPAN, JALISCO.
OWNER: DMI. PROJECT: SMA.

FOUR SEASONS RESORT TAMARINDO MAIN BUILDING & 8 VILLAS

CONCRETE STRUCTURE.
1 BASEMENT: 14,913.36 FT².
3 STOREYS MAIN BUILDING: 122,427.28 FT².
MAIN BUILDING HEIGHT: 42.98 FT.
8 VILLAS: 4,605.17 FT² EA.
LOCATION: MPO. DE LA HUERTA, JALISCO.
PROJECT: LEGORROCHA LEGORRETA + LEGORRETA® TALLER DE
ARQUITECTURA MR + GC.



CORPORATE OFFICES

CONCRETE STRUCTURE.
2 STOREYS: 22,401.67 FT².
LOCATION: ZAPOPAN, JALISCO.



COMMERCIAL CONSTRUCTION



AMERICAN SCHOOL

CONCRETE STRUCTURE.

2 BASEMENT LEVELS: 39,979.43 FT².

6 TOWER LEVELS: 136,988.68 FT².

HEIGHT: 91.86 FT.

LOCATION: GUADALAJARA, JAL.

OWNER: THE AMERICAN SCHOOL FOUNDATION
OF GUADALAJARA, A.C.



INTER KONE TOWER

CONCRETE STRUCTURE.

4 BASEMENT LEVELS: 56,123.41 FT².

12 TOWER LEVELS: 104,620.88 FT².

HEIGHT: 157.48 FT.

LOCATION: GUADALAJARA, JALISCO.

COMMERCIAL CONSTRUCTION



GALERIAS GUADALAJARA

**MALL EXPANSION.
SURFACE: 119,468 FT².**

**PARKING LOT EXPANSION.
SURFACE: 202,159 FT².
LOCATION: ZAPOPAN, JALISCO.
OWNER: CITICAPITAL.**



PLAZA PATRIA EXPANSION

**CONCRETE STRUCTURE.
2 STOREYS PARKING BASEMENT: 306,779.44 FT².
3 STOREYS COMMERCIAL BUILDING: 751,485.29 FT².
HEIGHT: 73.33 FT.
LOCATION: ZAPOPAN, JALISCO.**

COMMERCIAL CONSTRUCTION



VITANIA

CONCRETE STRUCTURE.
TOWER A CONDOMINIUMS 1 AND 2
1 BASEMENT: 28,917.50 FT².
7 STOREYS HOTEL TOWER: 59,071.75 FT².
HEIGHT: 126.31 FT.
LOCATION: NUEVO VALLARTA, NAYARIT.



CAR ATLAS FC

CONCRETE STRUCTURE.
1 BASEMENT: 20,681.90 FT².
2 TOWER LEVELS: 81,018.28 FT².
HEIGHT: 26.08 FT.
LOCATION: ZAPOPAN, JALISCO.
OWNER: ORLEGI.

COMMERCIAL CONSTRUCTION



NOVENA

CONCRETE STRUCTURE.
5 BASEMENT LEVELS: 202,596.81 FT².
15 TOWER LEVELS: 277,126.27 FT².
HEIGHT: 232.28 FT.
LOCATION: GUADALAJARA, JALISCO.



DARIO BUSINESS CENTER

COMMERCIAL CONSTRUCTION
DESCRIPTION: CONCRETE STRUCTURE.
4 STOREYS BASEMENT: 97,044.44 FT².
9 TOWER LEVELS: 106,405.64 FT².
HEIGHT: 125.33 FT.
LOCATION: GUADALAJARA, JALISCO.
OWNER: KIVA GRUPO INMOBILIARIO.



SCULPTURE

CONCRETE SCULPTURE "NAMELESS".
MEASUREMENTS: 65.62 x 4.27 x 38.06 FT.
LOCATION: GLORIETA TABACHINES,
ZAPOPAN, JALISCO
SCULPTOR: FRANCISCO UGARTE.

COMMERCIAL CONSTRUCTION



DOLPHIN HABITAT CABO SAN LUCAS

DOLPHIN HABITAT, SURFACE: 62,580.16 FT².

LOCATION: CABO SAN LUCAS, B.C.S.

OWNER: CABO DOLPHIN, S.A. DE C.V.

ARCHITECT: ENRIQUE NORTEN.



FARO MALL

FOUNDATION, CIVIL WORK & FINISHES.

SURFACE: 279,760.00 FT².

LOCATION: SAN JOSE DEL CABO, B.C.S.

OWNER: LOS CABOS B & B, S. DE R.L. DE C.V.



LIBRARY PARKING GUADALAJARA UNIVERSITY

**PARKING LOT.
MANUFACTURE AND PLACEMENT OF PRE-SLABS.
AREA: 1 19,436.00 FT².
LOCATION: ZAPOPAN, JALISCO.
OWNER: UNIVERSIDAD DE GUADALAJARA.**

CASINO WINPOT ANDARES

**CONCRETE STRUCTURE.
6 STOREYS BASEMENT: 44,468.50 FT².
HEIGHT: 66.54 FT.
LOCATION: ZAPOPAN, JALISCO.**



DOS BOCAS

**OFFICES & CENTRAL CONTROL ROOM.
3 STOREYS: 132,111.06 FT².
HEIGHT: 55.77 FT.
LOCATION: PARAISO, TABASCO.**

COMMERCIAL CONSTRUCTION



PUNTO POLANCO

CONCRETE STRUCTURE.

8 BASEMENT LEVELS: 513,069.08 FT².

19 BUILDING LEVELS: 519,126.96 FT².

HEIGHT: 291.99 FT.

LOCATION: MIGUEL HIDALGO, CDMX.

OWNER: GFA GRUPO INMOBILIARIO.



CORPORATE QUERETARO 1 & 2

CONCRETE STRUCTURE.

1 PARKING BASEMENT: 871,560 FT².

23 TOWER LEVELS: 201,319.60 FT².

HEIGHT: 265.75 FT.

LOCATION: QUERETARO, QUERETARO.

OWNER: CITICAPITAL.



HIGH PARK QUERETARO CORPORATE

CONCRETE STRUCTURE.

1 BASEMENT: 120,436.68 FT².

**24 STOREYS + 1 HELIPORT: 340,016.00
FT².**

HEIGHT: 301.18 FT.

LOCATION: QUERETARO, QUERETARO.

OWNER: CITICAPITAL.

COMMERCIAL CONSTRUCTION



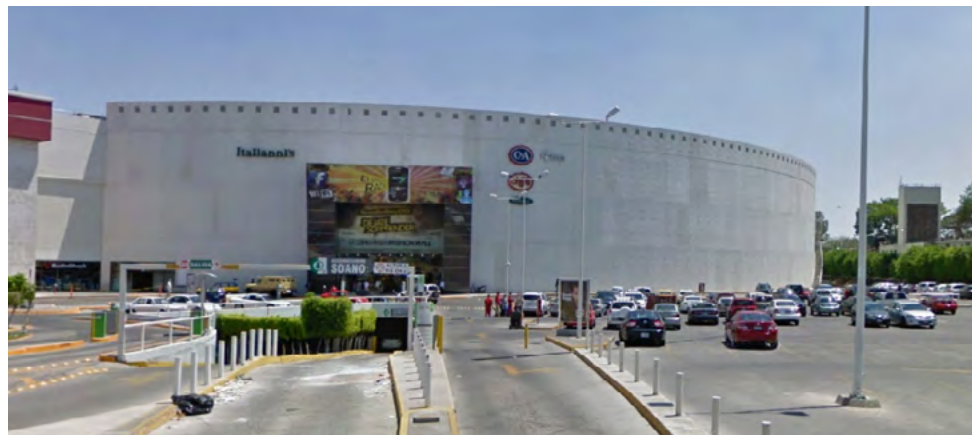
CASINO CAPRI

**CASINO & PARKING LOT.
AREA: 60,342.08 FT².
LOCATION: GUADALAJARA, JALISCO.
OWNER: OPTIMUS INMOBILIARIA S.A. DE C.V.**



PUERTA VALLARTA (PUNTO BANDERAS)

**CONCRETE STRUCTURE.
1 PARKING BASEMENT: 59,362.92 FT².
7 TOWER LEVELS: 214,285.40 FT².
HEIGHT: 113.52 FT.
LOCATION: PUERTO VALLARTA, JALISCO.
OWNER: ATRIUM DE VALLARTA, S.A. DE C.V.**



FASHION MALL

**GRAN PLAZA EXPANSION.
SURFACE: 215,200 FT².
LOCATION: ZAPOPAN, JALISCO.
OWNER: CONDOMINIO LA GRAN PLAZA, S.C.**

COMMERCIAL CONSTRUCTION



TOYOTA LOPEZ MATEOS

POST-TENSIONED CONCRETE STRUCTURE.

SURFACE: 45,009.08 FT².

LOCATION: ZAPOPAN, JALISCO.

OWNER: DALTON AUTOMOTRIZ, S.A. DE C.V.



TOYOTA ACUEDUCTO

CAR AGENCY.

AREA: 86,080.00 FT².

LOCATION: ZAPOPAN, JALISCO.

OWNER: MOSAICO INMOBILIARIA.



SEAT ACAPULCO

OFFICES.

AREA: 43,040.00 FT².

LOCATION: ACAPULCO, GUERRERO.

OWNER: GRUPO AUTOFIN DE MEXICO.

HONDA EXCELENCIA

OFFICES

SURFACE: 35520.9 FT².

LOCATION: GUADALAJARA, JALISCO.

OWNER: DALTON AUTOMOTRIZ S.A. DE C.V.



COMMERCIAL CONSTRUCTION



TOYOTA PATRIA

CAR AGENCY.

AREA: 80,441.76 FT².

LOCATION: ZAPOPAN, JALISCO.

OWNER: DALTON TOYOTA. S.A. DE C.V.



PUERTO PEÑASCO

BALL HALL.

HOTEL PEÑASCO DEL SOL.

AREA: 7,962.40 FT².

LOCATION: PUERTO PEÑASCO, SONORA.



EDUCARE

SCHOOL SPORTS AREA.

LOCATION: ZAPOPAN, JALISCO.

OWNER: OMNITRITION DE MEXICO.

PROJECT BY: ENRIQUE NORTEN.

HOUSING CONSTRUCTION



HOUSING CONSTRUCTION



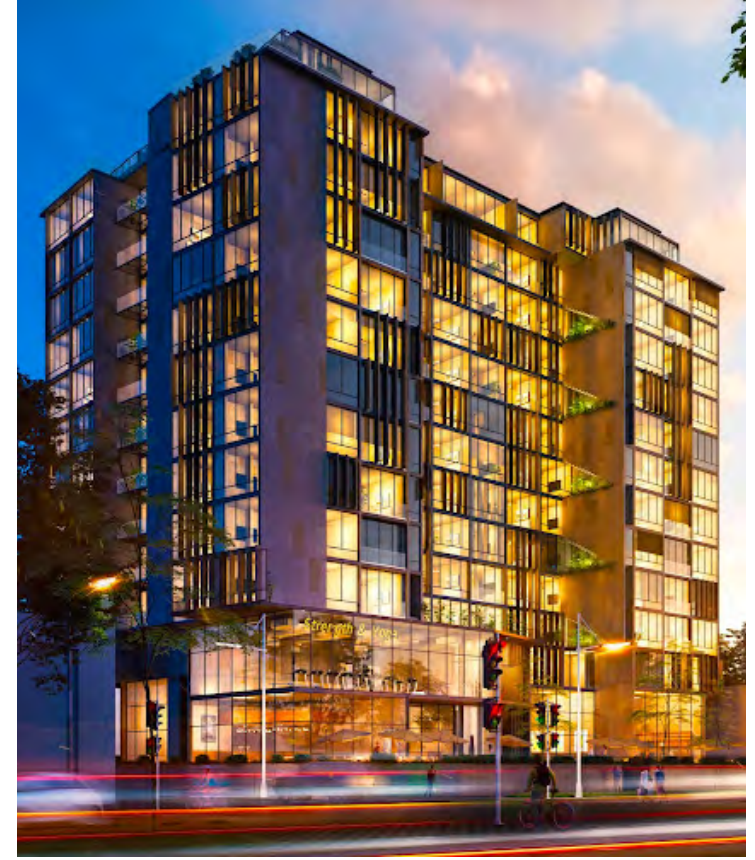
THE LANDMARK RESERVE

CONCRETE STRUCTURE.
6 BASEMENT LEVELS: 272,532.40 FT².
36 TOWER LEVELS: 510,453.86 FT².
HEIGHT: 1,600.55 FT.
LOCATION: ZAPOPAN, JALISCO.



LEGACY TOWER

6 BASEMENT LEVELS: 251,913.12 FT².
27 TOWER LEVELS: 454,954.32 FT².
HEIGHT: 416.83 FT.
LOCATION: ZAPOPAN, JALISCO.
PROJECT: SMA.



AGUA AZUL

CONCRETE STRUCTURE.
4 BASEMENT LEVELS: 49,803.21 FT².
12 TOWER LEVELS: 115,179.54 FT².
HEIGHT: 158.30 FT.
LOCATION: GUADALAJARA, JALISCO.

HOUSING CONSTRUCTION



VISTA LOMAS

CONCRETE STRUCTURE.
2 BASEMENT LEVELS: 69,647.99 FT².
9 TOWER LEVELS: 91,346.52 FT².
HEIGHT: 96,62 FT.
LOCATION: ZAPOPAN, JALISCO.
ROCHER HOLDINGS.



SENNA TOWER

1 BASEMENT: 32,978.47 FT².
12 TOWER LEVELS (HOUSING): 92,314.2 FT².
HEIGHT: 141.27 FT.
5 TOWER LEVELS (OFFICES): 13,2686.29 FT².
HEIGHT: 48,55 FT.
LOCATION: AV. MANUEL LEPE NO. 4758.
PUERTO VALLARTA, JALISCO. MEXICO.

HOUSING CONSTRUCTION



TORRE DEL PRADO

7 BASEMENT LEVELS: 97103.82 FT².

18 TOWER LEVELS: 147729.61 FT².

HEIGHT: 201.77 FT.

LOCATION: ZAPOPAN, JALISCO.

OWNER: C&C CAPITAL.



DISTRITO CUBE

3 BUILDINGS.

3 BASEMENT LEVELS: 126,236.32 FT².

5 STOREYS E/BUILDING: 146,906.28 FT².

TOWER A HEIGHT: 61.02 FT.

TOWER B HEIGHT: 66.11 FT.

TOWER C HEIGHT: 48.56 FT.

LOCATION: ZAPOPAN, JALISCO.

OWNER: CUBE RESIDENCIAL S.A. DE C.V.

HOUSING CONSTRUCTION



MIRADOR LA PAZ

CONCRETE STRUCTURE.
3 BASEMENT LEVELS: 46,969.44 FT².
12 TOWER LEVELS: 72,765.36 FT².
HEIGHT: 144.16 FT.
LOCATION: GUADALAJARA, JALISCO.
OWNER: INDEA.



VALARTE

FOUNDATION & CONCRETE STRUCTURE.
1 BASEMENT: 24,057.85 FT².
9 TOWER LEVELS: 133,026.85 FT².
HEIGHT: 137.30 FT.
LOCATION: PUERTO VALLARTA, JALISCO.
OWNER: GOVACASA, S. DE R.L. DE C.V.



HABITAT ARBOLEDA

CONCRETE STRUCTURE.

2 BASEMENT LEVELS: 22,789.68 FT².

8 TOWER LEVELS: 136,974.80 FT².

HEIGHT: 137.01 FT.

LOCATION: GUADALAJARA, JALISCO.

OWNER: DESARROLLO ARBOLEDAS S.A. DE C.V.



TORRE NIBA

CONCRETE STRUCTURE.

6 BASEMENT LEVELS: 254,689.20 FT².

29 TOWER LEVELS: 352,411.52 FT².

HEIGHT: 407.48 FT.

LOCATION: GUADALAJARA, JALISCO.



PUERTA LAS LOMAS

CONCRETE STRUCTURE. & FINISHES.

2 TOWERS.

3 BASEMENT LEVELS: 121,082.28 FT².

16 TOWER LEVELS: 92,030.28 FT².

HEIGHT: 198.49 FT.

LOCATION: ZAPOPAN, JALISCO.

OWNER: C&C CAPITAL.

HOUSING CONSTRUCTION



CONDOMINIO DOLMEN

CONCRETE STRUCTURE.

3 BASEMENT LEVELS: 26,206.41 FT².

11 TOWER LEVELS: 58,866.99 FT².

HEIGHT: 139.11 FT.

LOCATION: ZAPOPAN, JALISCO.



HIDALGO

CONCRETE STRUCTURE.

3 BASEMENT LEVELS: 84,153.96 FT².

20 TOWER LEVELS+ HELIPORT: 252,989.12 FT².

HEIGHT: 225.56 FT.

LOCATION: GUADALAJARA, JALISCO.

OWNER: PENINSULA.



MAR JONICO

CONCRETE STRUCTURE.

3 BASEMENT LEVELS: 41,278.48 FT².

16 TOWER LEVELS: 72,420.07 FT².

HEIGHT: 230.64 FT.

LOCATION: GUADALAJARA, JALISCO.

HOUSING CONSTRUCTION



DISTRITO CHAPULTEPEC

CONCRETE STRUCTURE.
3 BASEMENT LEVELS: 43,622.55 FT².
20 TOWER LEVELS: 210,602.47 FT².
HEIGHT: 231.63 FT.
LOCATION: GUADALAJARA, JAL.
OWNER: PENINSULA.



GARIBALDI

CONCRETE STRUCTURE.
4 BASEMENT LEVELS: 45,548.37 FT².
26 TOWER LEVELS: 158,679.98 FT².
HEIGHT: 274.93 FT.
LOCATION: GUADALAJARA, JALISCO.
OWNER: PENINSULA.



WEST POINT

CONCRETE STRUCTURE.
3 BASEMENT LEVELS: 82,851.46 FT².
18 TOWER LEVELS: 141,556.19 FT².
HEIGHT: 229.66 FT.
LOCATION: ZAPOPAN, JALISCO.
OWNER: IMMOBILIARE PROPERTIES, S.A. DE C.V.

HOUSING CONSTRUCTION



CENTRAL PARK GUADALAJARA

CONCRETE STRUCTURE.
3 RESIDENCES TOWERS.
2 BASEMENT LEVELS: 31,520.34 FT².
27 TOWER LEVELS: 220,425.06 FT².
HEIGHT: 302.10 FT.
LOCATION: GUADALAJARA, JALISCO.
OWNER: CITICAPITAL.



RINCONADA MARGARITAS

CONCRETE STRUCTURE.
4 BASEMENT LEVELS: 342,824.36 FT².
15 TOWER LEVELS: 468,877.76 FT².
HEIGHT: 191.93 FT.
LOCATION: GUADALAJARA, JALISCO.
OWNER: CUBE RESIDENCIAL, S.A. DE C.V.

HOUSING CONSTRUCTION



LIMU

CONCRETE STRUCTURE.
FOUNDATION & RETAINING WALLS.
LOCATION: PUERTO VALLARTA, JALISCO.
OWNER: PENINSULA.



GALATEA

CONCRETE STRUCTURE.
3 BASEMENT LEVELS: 61,913 FT².
23 TOWER LEVELS: 152,017 FT².
HEIGHT: 296.59 FT.
LOCATION: GUADALAJARA, JALISCO.
OWNER: CITICAPITAL.



NEREA

CONCRETE STRUCTURE.
3 BASEMENT LEVELS: 58,610 FT².
TOWER 100 - 21 STOREYS: 68,595 FT².
TOWER 200 - 17 STOREYS: 51,078 FT².
HEIGHT: 219.82 FT.
LOCATION: GUADALAJARA, JALISCO.
OWNER: CITICAPITAL.

HOUSING CONSTRUCTION



CIMA PARK T300, T400, T500, T800

CONCRETE STRUCTURE.

T300 1 BASEMENT: 8,637.05 FT²

15 TOWER LEVELS: 145,918.62 FT².

T300 HEIGHT: 158.46 FT.

T400 1 BASEMENT: 7,882.24 FT².

15 TOWER LEVELS: 145,472.62 FT².

HEIGHT: 48.30 FT.

T500 2 BASEMENT LEVELS: 48,675.23 FT².

15 TOWER LEVELS: 187,377.55 FT².

CONCRETE STRUCTURE.

2 BASEMENT LEVELS: 18,997.86 FT².

15 TOWER LEVELS: 179,641.75 FT².

HEIGHT: 183.99 FT.

HEIGHT: 159.74 FT.

LOCATION: ZAPOPAN, JALISCO.

OWNER: CITICAPITAL.



URBANIA

CONCRETE STRUCTURE.

2 BASEMENT LEVELS: 10,404.92 FT².

21 TOWER LEVELS: 215,350.64 FT².

HEIGHT: 219.49 FT.

LOCATION: ZAPOPAN, JALISCO.

OWNER: CITICAPITAL.



MARSELLESA

CONCRETE STRUCTURE.

4 BASEMENT LEVELS: 57,802.72 FT².

14 TOWER LEVELS: 120,587.32 FT².

HEIGHT: 144.357 FT.

LOCATION: GUADALAJARA, JALISCO.

OWNER: GRUPO DALTON.

HOUSING CONSTRUCTION



CITITOWER

CONCRETE STRUCTURE.
3 BASEMENT LEVELS: 160,840.48 FT².
3 STOREYS COMMERCIAL AREA.
23 TOWER LEVELS: 585,526.92 FT².
HEIGHT: 283.14 FT.
LOCATION: GUADALAJARA, JALISCO.
OWNER: CITICAPITAL.



VISTA MAGNA

CONCRETE STRUCTURE.
BUILDINGS: 2
4 BASEMENT LEVELS: 172,224 FT².
14 TOWER LEVELS: 82,787 FT².
TOTAL AREA: 255,012 FT².
LOCATION: ZAPOPAN, JALISCO.
OWNER: ROCHER HOLDINGS.

ESTRELA LIVING

CONCRETE STRUCTURE.
1 BASEMENT: 72,363.80 FT².
2 TOWERS - 8 LEVELS: 94,700.48 FT².
HEIGHT: 87.60 FT.
LOCATION: ZAPOPAN, JALISCO.
OWNER: INDEA. LOCATION: GUADALAJARA, JALISCO.
OWNER: INMOBILIARIA LOS PATOS.



HOUSING CONSTRUCTION



CAUDA

CONCRETE STRUCTURE.
2 STOREYS BASEMENT: 87,400.68 FT².
12 TOWER LEVELS: 181,101.56 FT².
HEIGHT: 437.01 FT.
LOCATION: GUADALAJARA, JALISCO.



ZUNO TOWER

CONCRETE STRUCTURE.
5 STOREYS BASEMENT: 30,051.93 FT².
15 TOWER LEVELS: 54,675.54 FT².
HEIGHT: 199.15 FT.
LOCATION: GUADALAJARA, JALISCO.
PROJECT: CRAFT ARQUITECTOS.



CIMA 300

CONCRETE STRUCTURE.
14 TOWER LEVELS: 149,026 FT².
HEIGHT: 147.64 FT.
LOCATION: ZAPOPAN, JALISCO.
OWNER: CITICAPITAL.

HOUSING CONSTRUCTION



SAN JAVIER PARK T100 / T200

CONCRETE STRUCTURE.

2 TOWERS.

4 STOREYS EACH TOWER: 24,467.81 FT² EA.

21 STOREYS + 1 HELIPORT EACH TOWER: 177,730.56 FT² EA.

HEIGHT: 232.28 FT.

LOCATION: ZAPOPAN, JALISCO.

OWNER: PENINSULA.



MONRAZ

CONCRETE STRUCTURE.

2 TOWERS.

2 BASEMENT LEVELS: 72,812.92 FT².

12 TOWER LEVELS + COMMON AREAS: 68,530.44 FT².

HEIGHT: 123.20 FT.

LOCATION: GUADALAJARA, JALISCO.

HOUSING CONSTRUCTION



SONATA

CONCRETE STRUCTURE.
3 BASEMENT LEVELS: 44,298.49 FT².
8 TOWER LEVELS: 72,257.81 FT².
HEIGHT: 94.98 FT.
LOCATION: GUADALAJARA, JAL.



TAYAU

CONCRETE STRUCTURE.
1 BASEMENT: 7,757.74 FT².
8 TOWER LEVELS: 58,630.27 FT².
HEIGHT: 94.98 FT.
LOCATION: BUCERÍAS, NAYARIT.
OWNER: PENINSULA.

HOUSING CONSTRUCTION



SANTA FE & PARADOX

**PENINSULA ARCOS SANTA FE
CONCRETE STRUCTURE.**

**6 BASEMENT LEVELS: 78,900.28 FT².
34 TOWER LEVELS: 357,186.49 FT².
HEIGHT: 347.44 FT.**

PENINSULA SANTA FE II

**6 BASEMENT LEVELS: 34,780.62 FT².
44 TOWER LEVELS: 285,120.63 FT².
HEIGHT: 526.90 FT.**

PENINSULA SANTA FE TORRE 300

**7 BASEMENT LEVELS: 43,848.40 FT².
51 TOWER LEVELS: 407,790.55 FT².
HEIGHT: 493.44 FT.**

PARADOX TOWER

**7 BASEMENT LEVELS:
95,199.96 FT².
54 TOWER LEVELS:
771,153.06 FT².
HEIGHT: 637.80 FT.**

**LOCATION: CUAJIMALPA, CDMX.
OWNER: PENINSULA.**



HOUSING CONSTRUCTION



BRELIA

**CONCRETE STRUCTURE.
2 TOWERS.**

**3 BASEMENT LEVELS: 103,575.76 FT².
T100, 21 TOWER LEVELS: 162,755.76 FT².
HEIGHT 263.68 FT.**

**T200, 19 TOWER LEVELS: 140,385.72 FT².
HEIGHT: 243.01 FT.**

**LOCATION: GUADALAJARA, JALISCO.
OWNER: PENINSULA.**



ANCORA SATELITE

**CONCRETE STRUCTURE.
STOREYS BY 13 - 22 AND STOREY ROOFTOP.
CONSTRUCTION: 90,972.05 FT².**

HEIGHT: 302.00 FT.

**LOCATION: TLALNEPANTLA DE BAZ, EDO. DE MÉXICO
OWNER: PENINSULA.**

HOUSING CONSTRUCTION



SÃO PAULO URBANO

CONCRETE STRUCTURE.
4 BASEMENT LEVELS: 65,050.33 FT².
28 TOWER LEVELS: 18,044.19 M².
HEIGHT: 306.76 FT.
LOCATION: GUADALAJARA, JALISCO.
OWNER: SERVICIOS AGAC.



COLON TOWERS PHASE 2

TOWER A: 19 STOREYS	HEIGHT: 191.74 FT.
TOWER B: 19 STOREYS	HEIGHT: 191.74 FT.
TOWER C: 17 STOREYS	HEIGHT: 176.65 FT.

**LOCATION: AV. CRISTOBAL COLON 4853, NUEVA ESPAÑA,
GUADALAJARA, JAL. GUADALAJARA, JALISCO 44980 MEXICO.**

HOUSING CONSTRUCTION



CENTRAL PARK 100. 200 Y 300

CONCRETE STRUCTURE.

1 BASEMENT: 7,047.80 FT².

23 TOWER LEVELS: 213,435.36 FT².

HEIGHT: 247.70 FT.

LOCATION: QUERETARO, QUERETARO.

OWNER: CITICAPITAL.



PENINSULA NUEVO MAZATLAN

CONCRETE STRUCTURE.

1 BASEMENT: 13,944.96 FT².

32 TOWER LEVELS: 500,340.00 FT².

HEIGHT: 278.54 FT.

LOCATION: MAZATLAN, SINALOA.

OWNER: PENINSULA.



**HIGH PARK QUERETARO
RESIDENCIAL**

CONCRETE STRUCTURE.

4 RESIDENTIAL TOWERS.

4 BASEMENT LEVELS: 17,666.84 FT².

24 TOWER LEVELS: 203,266.84 FT².

HEIGHT: 241.80 FT.

LOCATION: QUERETARO, QUERETARO.

OWNER: CITICAPITAL.

HOUSING CONSTRUCTION



ESPACIO YAQUIS

PHASE 1

CONCRETE STRUCTURE.

4 BASEMENT LEVELS: 117,402.36 FT².

16 TOWER LEVELS: 139,277.44 FT².

HEIGHT: 187.99 FT.

PHASE 2

CONCRETE STRUCTURE.

5 BASEMENT LEVELS: 140,096.38 FT².

18 TOWER LEVELS: 192,495.32 FT².

HEIGHT: 199.31 FT.

LOCATION: GUADALAJARA, JALISCO.

OWNER: DALTON CORPORATIVO.



MARE

CONCRETE STRUCTURE.

22 TOWER LEVELS: 384,797.83 FT².

HEIGHT: 214.90 FT.

LOCATION: ACAPULCO, GUERRERO.

OWNER: PENINSULA.

HOUSING CONSTRUCTION



MARITIMA GOLF & VILLAS

CONCRETE STRUCTURE.
1 BASEMENT: 15,851.31 FT².
9 TOWER LEVELS: 98,023.38 FT².
HEIGHT: 105.48 FT.
20 HOUSES: 30,120.68 FT² EA.
LOCATION: BUCERIAS, NAYARIT.
OWNER: PENINSULA.



MARITIMA

PHASES 1 & 2
CONCRETE STRUCTURE.
1 BASEMENT: 23,647.79 FT².
11 TOWER LEVELS: 274,380.97 FT².
HEIGHT: 45.40 FT.
LOCATION: FLAMINGOS. BUCERIAS, NAYARIT.
OWNER: PENINSULA.

HOUSING CONSTRUCTION



SOHO HOUSE PUERTO VALLARTA

CONCRETE STRUCTURE.
16 TOWER LEVELS: 223,950.68 FT².
HEIGHT: 229.95 FT.
LOCATION: PUERTO VALLARTA, JALISCO.
OWNER: FIFTY SEVEN CAPITAL GROUP.



NAO (BEFORE AVENTO)

CONCRETE STRUCTURE.
19 TOWER LEVELS: 379,074.80 FT².
HEIGHT: 212.27 FT.
LOCATION: ACAPULCO, GUERRERO.
OWNER: FRONDOSO GRUPO INMOBILIARIO.

HOUSING CONSTRUCTION



LA ISLA - CAPRI

CONCRETE STRUCTURE.

1 BASEMENT: 49,933.72 FT².

11 TOWER LEVELS: 307,195.63 FT².

HEIGHT: 137.14 FT.

LOCATION: ACAPULCO, GUERRERO.

OWNER: PENINSULA.



LA ISLA - EMERALD

CONCRETE STRUCTURE.

15 TOWER LEVELS: 299,848.92 FT².

HEIGHT: 158.79 FT.

LOCATION: ACAPULCO, GUERRERO.

OWNER: PENINSULA.



LA ISLA - FIJI

CONCRETE STRUCTURE.

15 TOWER LEVELS: 329,858.56 FT².

HEIGHT: 154.79 FT.

LOCATION: ACAPULCO, GUERRERO.

OWNER: PENINSULA.

HOUSING CONSTRUCTION



PENINSULA IXTAPA

CONCRETE STRUCTURE.

1 HABITACIONAL BASEMENT: 25,86 FT².

18 STOREYS HOUSING: 309,350 FT².

HABITACIONAL TOWER HEIGHT: 187 FT.

1 BASEMENT COMMERCIAL: 23,067 FT².

2 TOWER LEVELS COMMERCIAL: 42,739 FT².

HEIGHT: 187.01 FT.

LOCATION: IXTAPA, ZIHUATANEJO.

OWNER: PENÍNSULA.



PENINSULA DIAMANTE

CONCRETE STRUCTURE.

1 BASEMENT: 9,239.07 FT².

24 TOWER LEVELS: 260,017.55 FT²

HEIGHT: 235.66 FT.

LOCATION: ACAPULCO, GUERRERO.

OWNER: PENINSULA.

HOUSING CONSTRUCTION



PENINSULA NARVAL

CONCRETE STRUCTURE.
2 BUILDINGS.
2 BASEMENT LEVELS: 72,124.28 FT².
7 TOWER LEVELS: 123,987.48 FT².
HEIGHT: 72.18 FT.
LOCATION: BUCERIAS, NAYARIT.
OWNER: PENINSULA.



PENINSULA NUEVO VALLARTA

CONCRETE STRUCTURE.
10 STOREYS BUILDING: 619,754 FT².
HEIGHT: 157.15 FT.
LOCATION: NUEVO VALLARTA, NAYARIT.
OWNER: PENINSULA.

HOUSING CONSTRUCTION



NAUTICO NUEVO VALLARTA

CONCRETE STRUCTURE.

1 BASEMENT: 16,066.19 FT².

5 TOWER LEVELS: 53,265.66 FT².

HEIGHT: 60.20 FT.

LOCATION: NUEVO VALLARTA, NAYARIT.

OWNER: PENINSULA.



NAUTICO

CONCRETE STRUCTURE.

1 BASEMENT: 10,781.52 FT².

14 TOWER LEVELS: 98,927.44 FT².

HEIGHT: 156.82 FT.

LOCATION: PUERTO VALLARTA, JALISCO.

OWNER: PENINSULA.

HOUSING CONSTRUCTION



VELERA

CONCRETE STRUCTURE.
2 BASEMENT LEVELS: 142,677.60 FT².
23 TOWER LEVELS: 322,800.00 FT².
HEIGHT: 262.47 FT.
LOCATION: ACAPULCO, GUERRERO.
OWNER: PENINSULA.



BALANDRA

CONCRETE STRUCTURE.
3 BASEMENT LEVELS: 33,103.36 FT².
11 TOWER LEVELS: 46,524.09 FT².
HEIGHT: 137.80 FT.
LOCATION: GUADALAJARA, JALISCO.



MAR DE MITA

CONCRETE STRUCTURE.
2 BASEMENT LEVELS: 15,137.60 FT².
4 TOWER LEVELS: 27,052.47 FT².
HEIGHT: 56.59 FT.
LOCATION: PUNTA MITA, BAHIA DE BANDERAS.
NAYARIT.
OWNER: PUNTA BRISSA S.A. DE C.V.

HOUSING CONSTRUCTION



ANCORA TOWER

CONCRETE STRUCTURE.

1 BASEMENT: 9,732.64 FT².

8 TOWER LEVELS: 49,158.14 FT².

HEIGHT: 71.72 FT.

LOCATION: PUNTA DE MITA, NAYARIT.



PUERTA TLALNEPANTLA

CONCRETE STRUCTURE.

3 BASEMENT LEVELS: 60,371.67 FT².

12 TOWER LEVELS: 112,227.77 FT².

HEIGHT: 152.23 FT.

LOCATION:

TLALNEPANTLA DE BAZ, ESTADO DE MEXICO.



AVENUE POLANCO

CONCRETE STRUCTURE.

6 TOWERS AND 10 LEVELS: 327,416.04 FT².

4 BASEMENT LEVELS EA.: 168,264.88 FT².

HEIGHT: 132.87 FT.

LOCATION: MIGUEL HIDALGO, CDMX.

OWNER: PROMOTORA GFH S.A.P.I. DE C.V.

HOUSING CONSTRUCTION



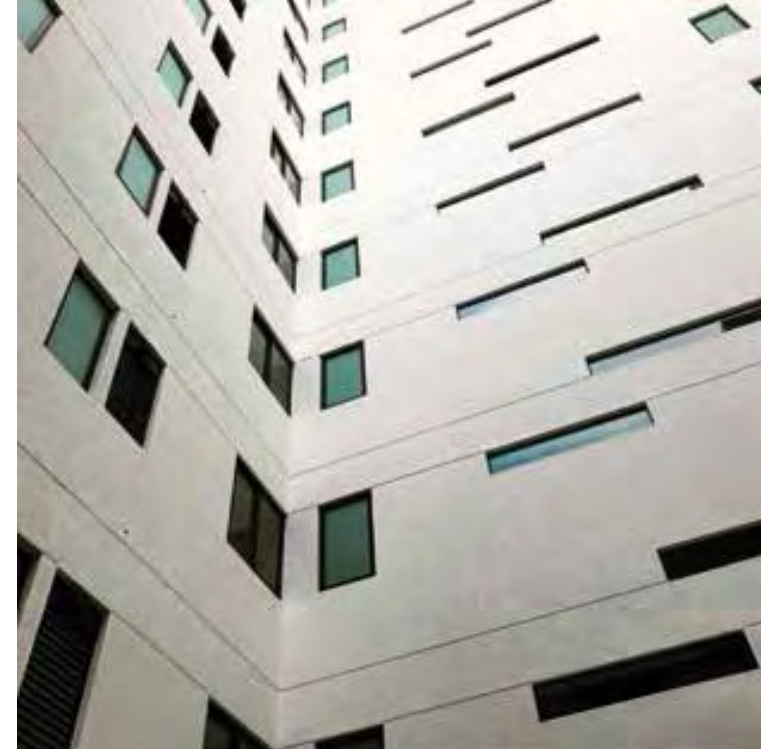
SAN ANTONIO 88

CONCRETE STRUCTURE.
3 STOREYS PARKING BASEMENT:
16,563.30 FT².
9 TOWER LEVELS: 35,807.45 FT².
HEIGHT: 114.04 FT.
LOCATION: BENITO JUAREZ, CDMX.



SAN ANTONIO 95

CONCRETE STRUCTURE.
3 BASEMENT LEVELS: 41,856.40 FT².
12 TOWER LEVELS: 94,774.08 FT².
HEIGHT: 145.18 FT.
LOCATION: BENITO JUAREZ, CDMX.
OWNER: ESTRATEGIA URBANA.



UNIVERSIDAD 1943

CONCRETE STRUCTURE.
4 BASEMENT LEVELS: 57,964.12 FT².
TOWER 100: 66,765.80 FT².
TOWER 200: 60,557.28 FT².
HEIGHT: 135.17 FT.
LOCATION: COYOACAN, CDMX.
OWNER: AURI.

HOUSING CONSTRUCTION



CORE 31 - LA CUSPIDE

CONCRETE STRUCTURE.
3 LEVELS BASEMENT: 62,889.94 FT².
33 TOWER LEVELS: 173,096.98 FT².
HEIGHT: 415.03 FT.
LOCATION: HUIXQUILUCAN, EDO. DE MEXICO.



ORIGINA PEDREGAL

CONCRETE STRUCTURE.
4 BASEMENT LEVELS: 301,280.00 FT².
33 TOWER LEVELS: 681,472.44 FT².
HEIGHT: 419.42 FT.
LOCATION: TLALPAN, CDMX.
PROJECT BY: SMA.

HOUSING CONSTRUCTION



PRIVADA 14

CONCRETE STRUCTURE.

10 STOREYS HOUSING TOWER: 555,000.80 FT².

2 STOREYS PARKING BASEMENT: 112,194.52 FT².

HEIGHT: 124.02 FT.

LOCATION: CUAJIMALPA, CDMX.

OWNER: GFA GRUPO INMOBILIARIO.



VIA INTERLOMAS

CONCRETE STRUCTURE.

26 TOWER LEVELS: 228,725.00 FT².

HEIGHT: 896.85 FT.

LOCATION: HUIXQUILUCAN, EDO. DE MEXICO.

PROPIETARIO: PENINSULA.

HOUSING CONSTRUCTION



TIZATE

TOWER 100.

WORKS COMPLETE / CONCRETE STRUCTURE.

1 BASEMENT: 9168.7 FT².

7 TOWER LEVELS: 102647.23 FT².

HEIGHT: 91.86 FT.

TOWER 200.

CONCRETE STRUCTURE.

1 BASEMENT: 12206.27 FT².

5 TOWER LEVELS: 31183.05 FT².

HEIGHT: 91.86 FT.

TOWER 300

CONCRETE STRUCTURE.

1 BASEMENT: 9,165.37 FT².

7 TOWER LEVELS: 102,609.94 FT².

HEIGHT: 91.86 FT.

LOCATION: NUEVO VALLARTA, NAYARIT.

OWNER: PENINSULA.

BOLONGO PHASE I Y II

CONCRETE STRUCTURE.

PHASE I:

2 BASEMENT LEVELS: 44,438.80 FT².

5 TOWER LEVELS: 235,159.80 FT².

PHASE II:

1 BASEMENT: 46,369.79 FT².

7 TOWER LEVELS: 226,748.17 FT².

HEIGHT: 284.06 FT.

PHASE III:

CONCRETE STRUCTURE.

11 TOWER LEVELS: 155,737.66 FT².

HEIGHT: 100.56 FT.

LOCATION: BAHIA DE BANDERAS, NAYARIT.

OWNER: PENINSULA.



HOUSING CONSTRUCTION



CONDOMINIUM COUNTRY CLUB

CONCRETE STRUCTURE.
5 BASEMENT LEVELS: 105,448.00 FT².
34 TOWER LEVELS: 89,502.00 FT².
HEIGHT: 383.20 FT.
LOCATION: GUADALAJARA, JALISCO.
OWNER: C&C CAPITAL.



CONDOMINIUM COUNTRY PARKING

CONCRETE STRUCTURE.
5 STOREYS PARKING BASEMENT:
112,980.00 FT².
LOCATION: GUADALAJARA, JALISCO.
OWNER: C&C CAPITAL.

HOUSING CONSTRUCTION



ESPACIO MONRAZ TERRAZAS

CONCRETE STRUCTURE.

TOWERS: 2.

4 BASEMENT LEVELS: 106,000.85 FT².

19 TOWER LEVELS 1: 82,857.92 FT².

25 TOWER LEVELS 2: 131,499.79 FT².

HEIGHT: 281.50 FT.

LOCATION: GUADALAJARA, JALISCO.

OWNER: DALTON.



HORACIO 1716 GARDEN POLANCO

CONCRETE STRUCTURE.

2 BASEMENT LEVELS: 33,678.80 FT².

6 TOWER LEVELS: 72,845.20 FT².

HEIGHT: 71.19 FT.

LOCATION: CDMX.

HOUSING CONSTRUCTION



CANEA

EXCAVATION. CONCRETE STRUCTURE.
1 BASEMENT: 4,641.65 FT².
11 TOWER LEVELS: 42,938.10 FT².
HEIGHT: 125.98 FT.
LOCATION: PUERTO VALLARTA, JALISCO.
OWNER: PENINSULA.



ALYVE

CONCRETE STRUCTURE.
4 BASEMENT LEVEL: 36,210.65 FT².
18 TOWER LEVELS: 69,576.08 FT².
HEIGHT: 186.97 FT.
LOCATION: AV. MANUEL AVILA CAMACHO NO. 2040, JARDINES DEL COUNTRY. GUADALAJARA, JALISCO.

INDUSTRIAL CONSTRUCTION



INDUSTRIAL CONSTRUCTION



BODEGA TRESGUERRAS

COMPLEX, WAREHOUSE AND
OFFICES.
WAREHOUSE AREA: 19662.650 FT².
NATURAL AREA: 9134.577 FT².
LOCATION: AV. INDUSTRIA DEL AGAVE,
ZAPOCAN, JALISCO.



HABILITADOS

INDUSTRIAL FACILITIES.
ENABLING AND SUPPLY OF STEEL REINFORCEMENT.
HABILITADOS AREA: 53145.94 FT²
SURFACE: 80961.82 FT²
GUADALAJARA, JAL.

INDUSTRIAL CONSTRUCTION



EMERSON WAREHOUSE

INDUSTRIAL FACILITIES.

BUILDING APPROVED BY: FMG (FACTORY MUTUAL GLOBAL).

LOCATION: GUADALAJARA, JALISCO.

AREA: 174,096 FT².

EXPANSION AREA: 49,926 FT².

OWNER: LAPISLAZULI INDUSTRIAL.

ARCHITECT: RAFAEL ZALDO JAIMES.



BECA

INDUSTRIAL FACILITIES.

SURFACES: 8051.4 FT².

ARQUITECT: RAFAEL ZALDO JAIMES.

INDUSTRIAL CONSTRUCTION



PAN BUENO

INDUSTRIAL BAKERY.

AREA: 75,320.00 FT².

LOCATION: TECHNOLOGY PARK. ZAPOPAN, JALISCO.

OWNER: MA. ISABEL CORNEJO



CEDROS JALISCO BUSINESS PARK

OFFICES BUILDING.

AREA: 30,558 FT².

DESCRIPTION: AIR CONDITIONING.

AREA: 528,445 FT².

LOCATION: TLAQUEPAQUE, JALISCO.

OWNER: FIDEICOMISO BANSI, S.A.

INDUSTRIAL CONSTRUCTION



GARBAGE TRANSFER PLANT

STEEL STRUCTURE WAREHOUSE.
AREA: 63,484 FT².
LOCATION: TLAQUEPAQUE, JALISCO.
OWNER: HASAR'S.



ECOPARK

DEVELOPEMENT INDUSTRIAL PARK & INDUSTRIAL FACILITIES.
25 WAREHOUSES.
AREA: 328,330 FT².
LOCATION: ZAPOPAN, JALISCO.

INDUSTRIAL CONSTRUCTION



BELENES INDUSTRIAL FACILITIES

INDUSTRIAL FACILITIES AREA: 34,432 FT².

OFFICES AREA: 2,582 FT².

LOCATION: ZAPOPAN, JALISCO.

OWNER: SAHA, S.A. DE C.V.



CEDIS CULIACAN

INDUSTRIAL FACILITIES.

AREA: 134,500.00 FT².

LOCATION: CULIACAN, SINALOA.

OWNER: ALBERTO HAWA Y FRANCISCO
BORREGO.



FAMSA DISTRIBUTION CENTER

WAREHOUSE.

AREA: 139,880.00 FT².

LOCATION: TLAQUEPAQUE, JALISCO.

OWNER: ORGANIZACION MAXIMA.

INDUSTRIAL CONSTRUCTION



EMBUTIDOS CORONA

EXPANSION OF SAUSAGE PROCESSING PLANT (COOLING CHAMBER AND CONSERVATION).

SURFACE: 24,003.52 FT².

LOCATION: LUIS ENRIQUE WILLIAMS 865P, 45140, GUADALAJARA JALISCO. PROPIETARIO: VILLADIA S.A. DE C.V.



ESTEVEZ WAREHOUSE

AREA: 6,456 FT².

LOCATION: EL SALTO, JALISCO.

OWNER: HELIOS ESTEVEZ PEREZ.

INDUSTRIAL CONSTRUCTION



LLAVES ALTUNA

INDUSTRIAL FACILITIES WITH POST-TENSIONED.
LOCATION: ZAPOPAN, JALISCO.
INDUSTRIAL WAREHOUSE SURFACE: 37,660.00 FT².
OWNER: LLAVES ALTUNA.



INDUSTRIAL FACILITIES PARRAS IV Y V

INDUSTRIAL FACILITIES AREA: 128,044 FT².
OFFICES AREA: 6,456 FT².
LOCATION: GUADALAJARA, JALISCO.
OWNER: SAHA S.A. DE C.V.

INDUSTRIAL CONSTRUCTION



MUEBLES LIZ

SUF. CONST. 83,654.63 FT²
LOCATION: ZAPOPAN, JALISCO.



INDUSTRIAL WAREHOUSE COMEX

LOCATION: CALZ. LAZARO CARDENAS, PARQUE INDUSTRIAL EL ALAMO,
GUADALAJARA, JAL.



CARLOS MERIDA 53
LOMAS DEL COLLI
ZAPOPAN, JALISCO.
45010
MEXICO